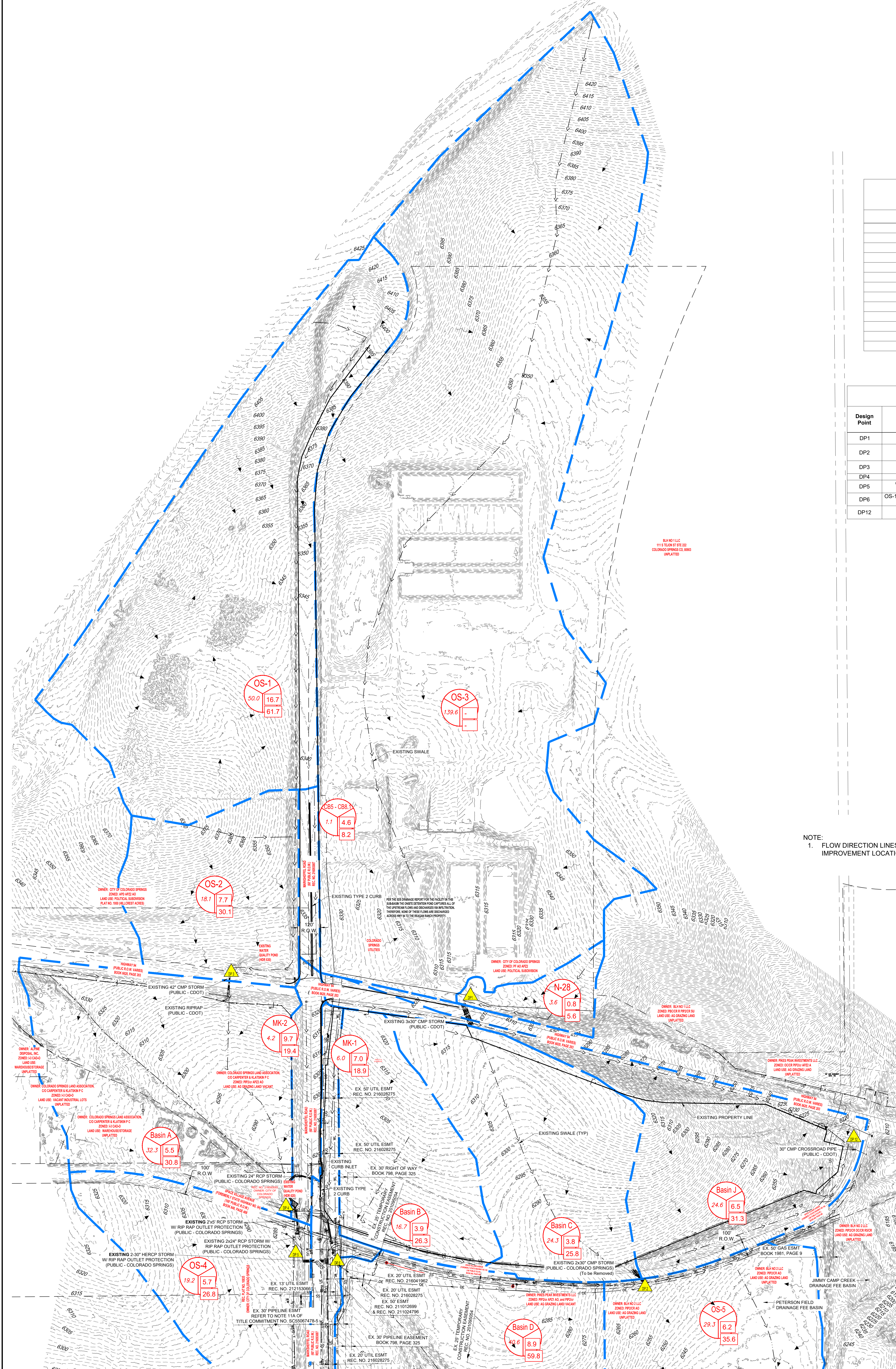




Know what's below.
Call before you dig.



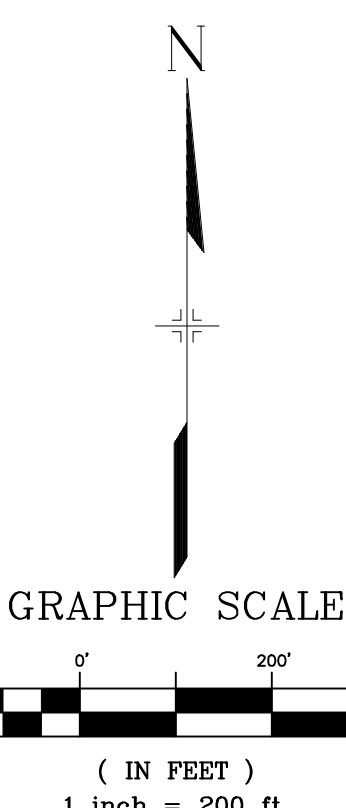
REAGAN RANCH MDDP Existing Conditions Basin Summary Table				
Area ID	Area (Acres)	Q5 (cfs)	Q100 (cfs)	
BASIN OS-1	50.02	16.68	61.70	
BASIN OS-2	18.14	7.73	30.13	
BASIN N28	3.60	0.84	5.62	
BASIN CBS-CB8.1	1.12	4.56	8.17	
BASIN OS-4	19.16	5.72	26.77	
Basin A	32.26	5.49	30.80	
Basin B	16.72	3.91	26.30	
Basin C	24.29	3.84	25.84	
Basin D	40.61	8.90	59.80	
MK-1	5.98	7.01	18.93	
MK-2	4.19	9.68	19.42	
BASIN OS-5	29.30	7.24	41.52	
Basin J	24.63	6.50	31.34	

REAGAN RANCH MDDP Existing Design Point Summary				
Design Point	Sub-Basins	Total Area (ac.)	Q(5) (cfs)	Q(100) (cfs)
DP1	CBS - CB8.1 & N28	4.72	3.27	9.80
DP2	Basin C ACROSS SPACE VILLAGE	24.29	3.84	25.84
DP3	OS-1 & OS-2 (Existing WQ Detention omitted)	68.16	19.42	72.84
DP4	OS-1, OS-2, Basin A, & MK-2	104.60	25.92	99.93
DP5	OS-1, OS-2, Basin A, MK-2, & OS-4 ACROSS MARKSHEFFEL	123.76	26.77	105.90
DP6	OS-1, OS-2, Basin A, MK-2, OS-4, Basin B & MK-1	146.47	29.60	118.92
DP12	Basin J Outfall	29.35	9.38	40.40

NOTE:
1. FLOW DIRECTION LINES ARE NOT INTENDED TO INDICATE CHANNELS OR CHANNEL IMPROVEMENT LOCATIONS

LEGEND

- BASIN BOUNDARY
- EXISTING CONTOUR
- EXISTING STORM DRAIN PIPE
- FLOW DIRECTION
- EXISTING PROPERTY LINE
- PROPERTY LINE
- FLOW DIRECTION ARROW
- DEVELOPED BASIN DESIGNATION
- 5-YEAR STORM EVENT PEAK FLOW (CFS)
- 100-YEAR STORM EVENT PEAK FLOW (CFS)
- BASIN AREA (AC.)
- DESIGN POINT



No.	DATE	DESCRIPTION	BY
COMPUTER FILE MANAGEMENT			
FILE NAME: S:\22.351.004 - Reagan Ranch Add Parcels\200 Design\220 Drainage-WR\222 Reports\MDDP\DWG\Reagan Ranch - DR-current-2020 MDDP.dwg			
PLOT DATE: May 10, 2023 7:37:05 AM			
THIS DRAWING IS CURRENT AS OF PLOT DATE AND MAY BE SUBJECT TO CHANGE			

SHEET KEY

PREPARED BY: **Matrix**

SEAL

PRELIMINARY
THIS DRAWING HAS NOT BEEN APPROVED BY GOVERNING AGENCIES AND IS SUBJECT TO CHANGE

FOR AND ON BEHALF OF
MATRIX DESIGN GROUP, INC.
PROJECT No. 22.351.004

PIKES PEAK INVESTMENTS, LLC

COLORADO SPRINGS, COLORADO
REAGAN RANCH MDDP

EXISTING CONDITIONS

DESIGNED BY: JTS
DRAWN BY: JTS
CHECKED BY: GGS

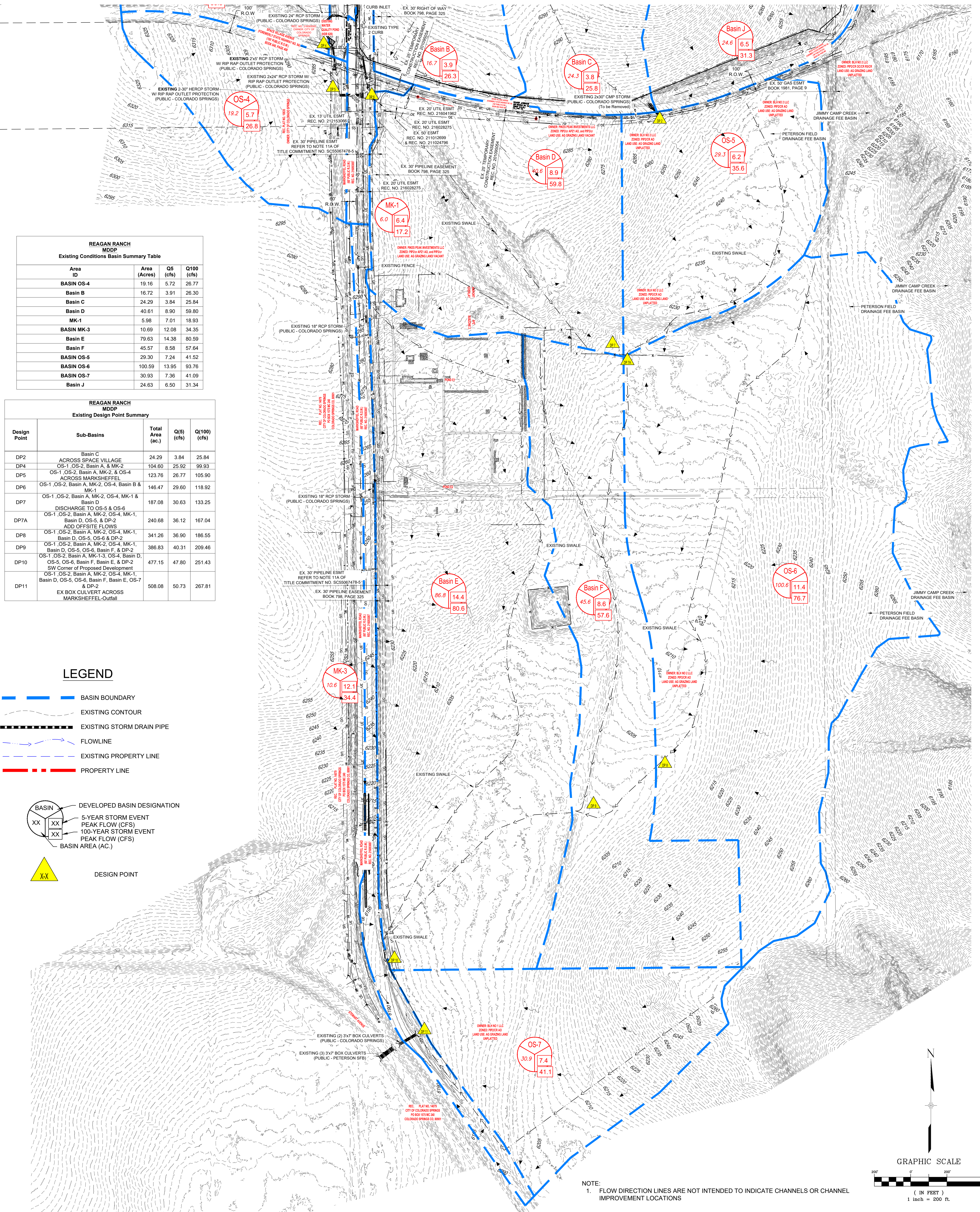
SCALE: HORIZ 1" = 200'
VERT. NA

DATE ISSUED: MARCH 2023
SHEET 1 OF 11

DRAWING No. DR01



Know what's below.
Call before you dig.



REAGAN RANCH MDDP Existing Conditions Basin Summary Table

Area ID	Area (Acres)	Q5 (cfs)	Q100 (cfs)
BASIN OS-4	19.16	5.72	26.77
Basin B	16.72	3.91	26.30
Basin C	24.29	3.84	25.84
Basin D	40.61	8.90	59.80
MK-1	5.98	7.01	18.93
BASIN MK-3	10.69	12.08	34.35
Basin E	79.63	14.38	80.69
Basin F	45.57	8.58	57.64
BASIN OS-5	29.30	7.24	41.52
BASIN OS-6	100.59	13.95	93.76
BASIN OS-7	30.93	7.36	41.09
Basin J	24.63	6.50	31.34

REAGAN RANCH MDDP Existing Design Point Summary

Design Point	Sub-Basins	Total Area (ac.)	Q(5) (cfs)	Q(100) (cfs)
DP2	Basin C	24.29	3.84	25.84
DP4	ACROSS SPACE VILLAGE	104.60	25.92	99.93
DP5	OS-1, OS-2, Basin A, MK-2, & OS-4	123.76	26.77	105.90
DP6	OS-1, OS-2, Basin A, MK-2, OS-4, Basin B & MK-1	146.47	29.60	118.92
DP7	OS-1, OS-2, Basin A, MK-2, OS-4, MK-1 & Basin D	187.08	30.63	133.25
DP7A	DISCHARGE TO OS-5 & OS-6	240.68	36.12	167.04
DP8	OS-1, OS-2, Basin A, MK-2, OS-4, MK-1, Basin D, OS-5, OS-6 & DP-2	341.26	36.90	186.55
DP9	OS-1, OS-2, Basin A, MK-2, OS-4, MK-1, Basin D, OS-5, OS-6, Basin F, & DP-2	386.83	40.31	209.46
DP10	OS-1, OS-2, Basin A, MK-1, OS-4, Basin D, OS-5, OS-6, Basin F, Basin E, & DP-2	477.15	47.80	251.43
DP11	OS-1, OS-2, Basin A, MK-2, OS-4, MK-1, Basin D, OS-5, OS-6, Basin F, Basin E, OS-7 & DP-2	508.08	50.73	267.81

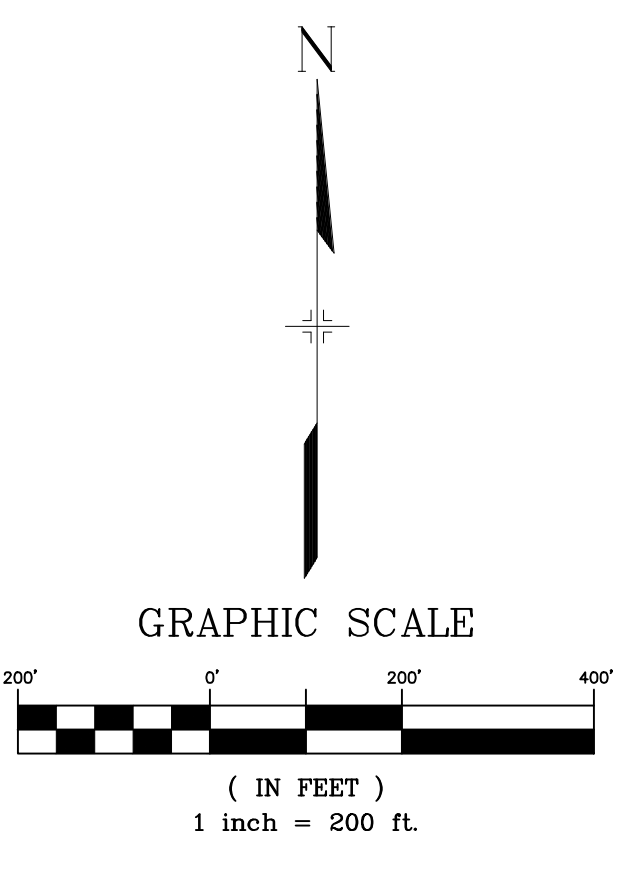
LEGEND

- BASIN BOUNDARY
- EXISTING CONTOUR
- EXISTING STORM DRAIN PIPE
- FLOWLINE
- EXISTING PROPERTY LINE
- PROPERTY LINE

DESIGNED BASIN DESIGNATION

XX — 5-YEAR STORM EVENT PEAK FLOW (CFS)
 XX — 100-YEAR STORM EVENT PEAK FLOW (CFS)
 XX — BASIN AREA (AC.)

DESIGN POINT



NOTE:
1. FLOW DIRECTION LINES ARE NOT INTENDED TO INDICATE CHANNELS OR CHANNEL IMPROVEMENT LOCATIONS

<p>REFERENCE DRAWINGS</p> <table border="1"> <thead> <tr> <th>No.</th> <th>DATE</th> <th>DESCRIPTION</th> <th>BY</th> </tr> </thead> <tbody> <tr> <td colspan="4">COMPUTER FILE MANAGEMENT</td> </tr> <tr> <td colspan="4">FILE NAME: S:\22.351.004 - Reagan Ranch Add Parcels\200 Design\220 Drainage-WR\222 Reports\MDDP\DWG\Reagan Ranch - DR-current-2020 MDDP.dwg</td> </tr> <tr> <td colspan="4">PLOT DATE: May 10, 2023 7:35:16 AM</td> </tr> <tr> <td colspan="4">THIS DRAWING IS CURRENT AS OF PLOT DATE AND MAY BE SUBJECT TO CHANGE</td> </tr> </tbody> </table>	No.	DATE	DESCRIPTION	BY	COMPUTER FILE MANAGEMENT				FILE NAME: S:\22.351.004 - Reagan Ranch Add Parcels\200 Design\220 Drainage-WR\222 Reports\MDDP\DWG\Reagan Ranch - DR-current-2020 MDDP.dwg				PLOT DATE: May 10, 2023 7:35:16 AM				THIS DRAWING IS CURRENT AS OF PLOT DATE AND MAY BE SUBJECT TO CHANGE				<p>SHEET KEY</p>	<p>PREPARED BY:</p>	<p>SEAL</p> <p>PRELIMINARY THIS DRAWING HAS NOT BEEN APPROVED BY GOVERNING AGENCIES AND IS SUBJECT TO CHANGE</p>	<p>PIKES PEAK INVESTMENTS, LLC</p> <p>COLORADO SPRINGS, COLORADO REAGAN RANCH MDDP/FDR</p> <p>EXISTING CONDITIONS</p>	<p>FOR AND ON BEHALF OF MATRIX DESIGN GROUP, INC. PROJECT No. 19.224.008</p> <p>DESIGNED BY: JTS DRAWN BY: JTS CHECKED BY: GGS</p> <p>SCALE: HORIZ 1" = 200' VERT. NA</p> <p>DATE ISSUED: FEBRUARY 2021 SHEET 2 OF 11</p> <p>DRAWING No. DR02</p>
	No.	DATE	DESCRIPTION	BY																					
COMPUTER FILE MANAGEMENT																									
FILE NAME: S:\22.351.004 - Reagan Ranch Add Parcels\200 Design\220 Drainage-WR\222 Reports\MDDP\DWG\Reagan Ranch - DR-current-2020 MDDP.dwg																									
PLOT DATE: May 10, 2023 7:35:16 AM																									
THIS DRAWING IS CURRENT AS OF PLOT DATE AND MAY BE SUBJECT TO CHANGE																									