

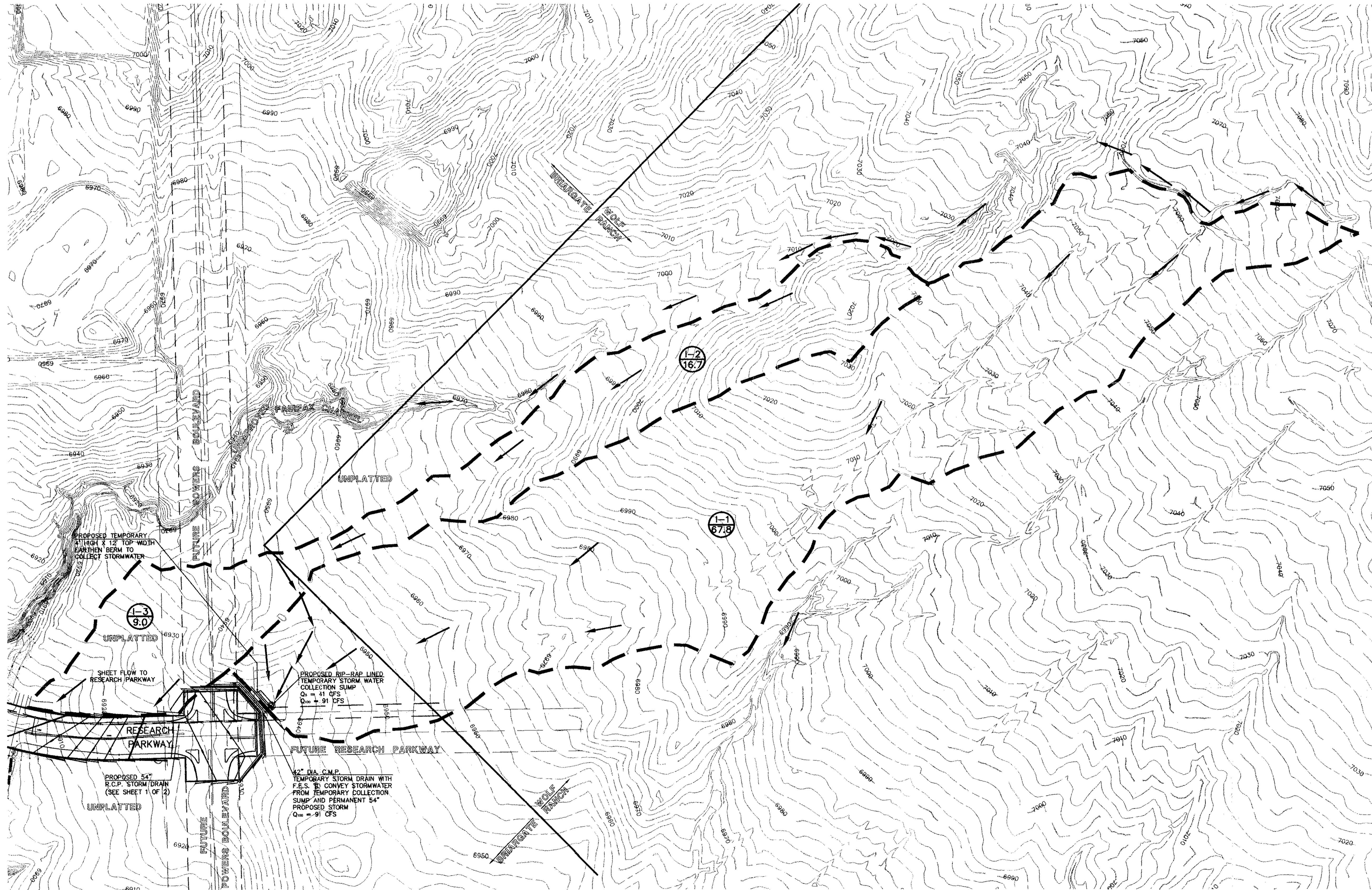
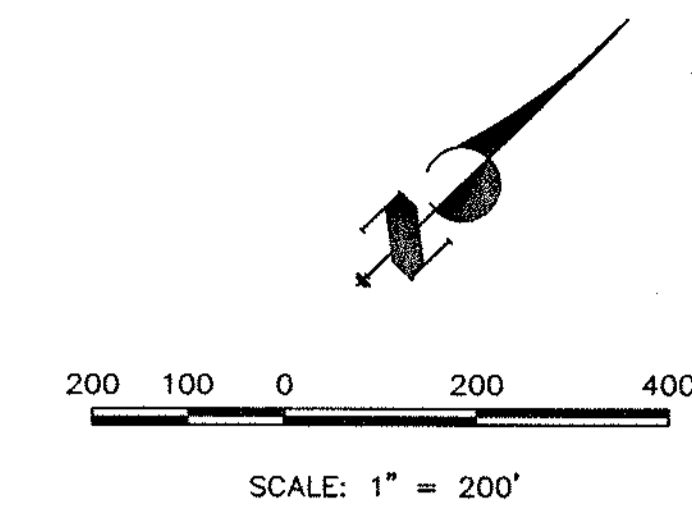
RESEARCH PARKWAY (SCARBOROUGH DR. TO POWERS BLVD.)

INCLUDING RESEARCH PARKWAY SUBDIVISION FILING NO. 6

PRELIMINARY/FINAL DRAINAGE REPORT

INTERIM PLAN FOR OFF-SITE RUNOFF

JANUARY 2000



BASIN	AREA (ACRES)	Q ₅ (CFS)	Q ₁₀₀ (CFS)
1	67.8	34	75
2	16.7	10	23
3	9.0	7	16

DESCRIPTION	SYMBOL
EXISTING GROUND CONTOUR	6910
PROPOSED FINISHED CONTOUR	6910
SUBDIVISION BOUNDARY	---
BASIN BOUNDARY	---
DEVELOPED DRAINAGE	---
BASIN IDENTIFIER	(A) 10.1
EXISTING STORM SEWER	---
PROPOSED STORM SEWER	---
FUTURE STORM SEWER	---

X:\870000.a\11871500.DRAKINGS\exhib\dr\research-powers.dwg Tue Jan 25 15:57:27 2000 JH Engineer.rtg

XREFS: 871500C-DF-RP

UNTIL SUCH TIME AS THESE DRAWINGS ARE APPROVED BY THE APPROPRIATE REVIEWING AGENCIES, JR. ENGINEERING, LTD. ASSUMES NO LIABILITY FOR THE PURPOSES DESIGNATED BY WRITTEN AUTHORIZATION.

48 HOURS BEFORE YOU DIG, CALL UTILITY LOCATORS
1-800-922-1987
 CITY OF COLORADO SPRINGS DEPT. OF UTILITIES
 GAS, ELECTRIC, WATER AND WASTEWATER

JR Engineering, LLC
 4310 ArrowsWest Drive
 Colorado Springs, CO 80907-3449
 (719) 598-2593 • FAX (719) 628-8613

NO.	REVISION	BY	DATE

SCALES:
 PLAN: 1"=200'
 PROFILE: N/A
 DATE: 1/17/00
 DES. BY: VSF
 DWN. BY: MES
 CHK. BY:

RESEARCH PARKWAY (SCARBOROUGH DR. TO POWERS BLVD.)
 INCLUDING RESEARCH PARKWAY SUBDIVISION FILING NO. 6
 PRELIMINARY/FINAL DRAINAGE REPORT
 INTERIM PLAN FOR OFF-SITE RUNOFF

SHEET 2 OF 2
 JOB NO. 8715.00