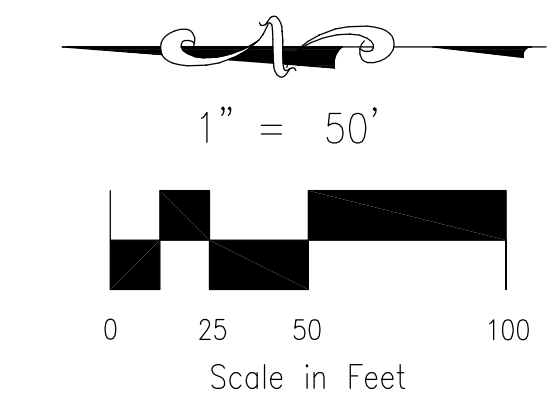
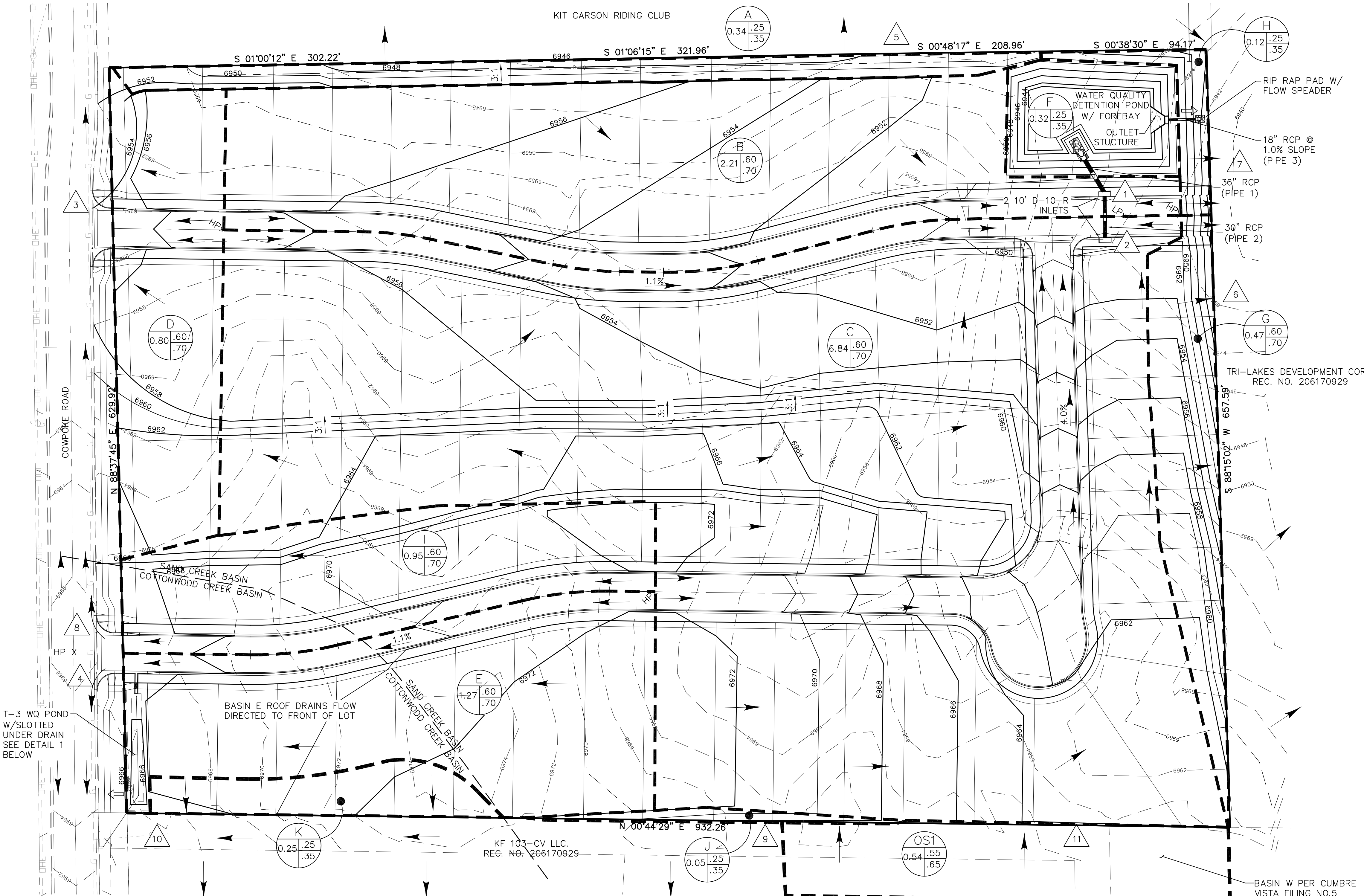


# THE RIDGE AT CUMBRE VISTA FILING NO. 1

## FINAL DRAINAGE PLAN

### JANUARY 2014

KIT CARSON RIDING CLUB



**LEGEND**

DESIGN POINT	
FLOW DIRECTION	
EMERGENCY OVERTFLOW	
HIGH POINT	HP X
TOP OF BERM	TOP
TOE OF BERM	TOE
FLOW LINE	FL
FINISH GRADE	FG
BASIN DESIGNATION	
ACRES	
PROPOSED MINOR CONTOUR	
PROPOSED MAJOR CONTOUR	
EXISTING MINOR CONTOUR	
EXISTING MAJOR CONTOUR	
BASIN BOUNDARY	

**PIPE TABLE**

PIPE	SIZE	FLOW Q50	FLOW Q100
1	36" RCP	13.7	28.5
2	30" RCP	13.6	28.3
3	18" RCP		9.2

**DESIGN POINT TABLE**

DESIGN PT.	FLOW Q5	FLOW Q100
1	3.2	6.6
2	13.6	28.3
3	3.7	7.8
4	2.0	4.1
5	0.4	1.1
6	1.4	3.0
7	0.2	0.4
8	1.8	3.8
9	0.1	2.2
10	0.3	0.7
11	1.1	2.2
POND	13.9	29.0

**DETENTION POND INFORMATION**

VOLUME REQUIRED	1.74 AC.-FT.
VOLUME PROVIDED	2.25 AC.-FT.
RELEASE RATE	9.21 CFS
100-YEAR WSEL	6949.30
WQSEL	6948.00
BOTTOM OF POND	6943.00

**T-3 WQCV INFORMATION**

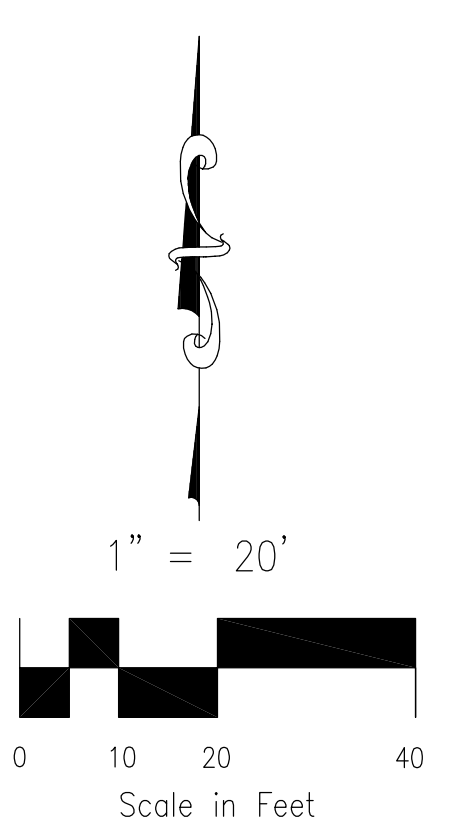
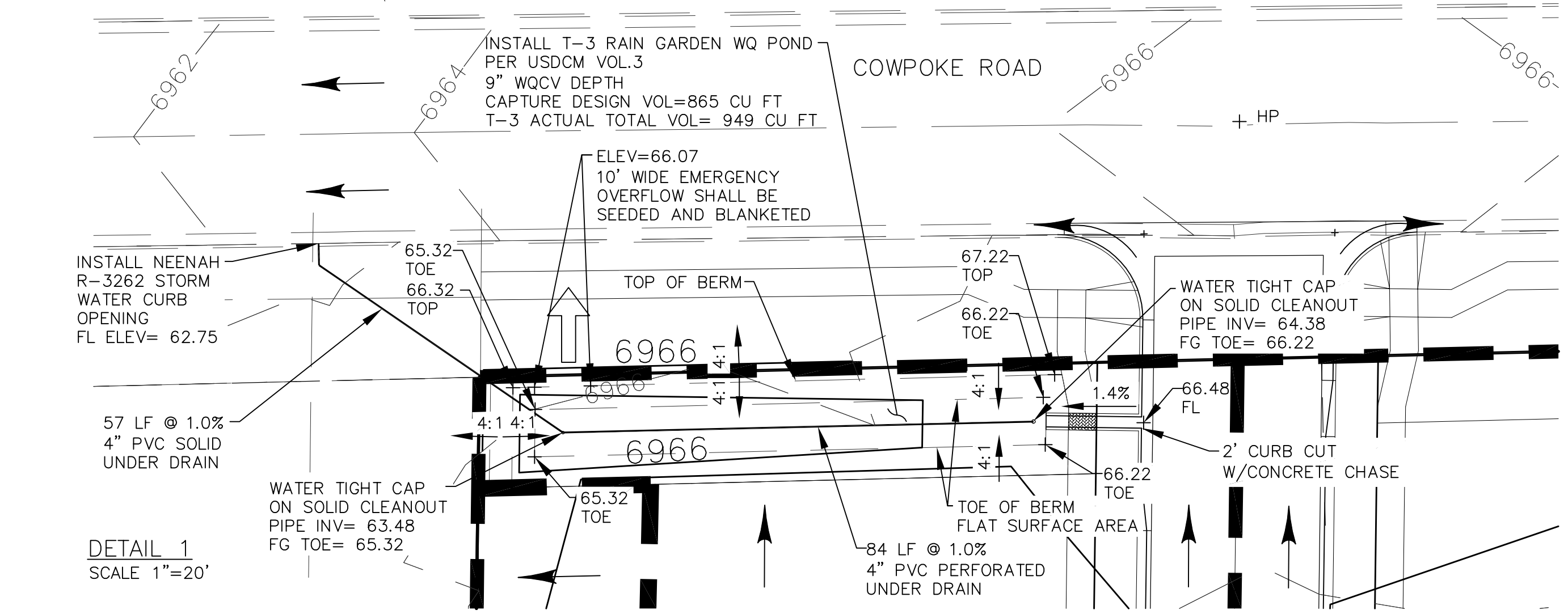
VOLUME REQUIRED	865 CU. FT.
VOLUME PROVIDED	949 CU. FT.
VOLUME TO DRAIN	12 HOUR
WQCV DEPTH	9 INCHES
WQSEL	6966.07
BOTTOM OF POND	6965.32

T-3 WQ POND  
W/SLOTTED  
UNDER DRAIN  
SEE DETAIL 1  
BELOW

BASIN E ROOF DRAINS FLOW  
DIRECTED TO FRONT OF LOT

BASIN W PER CUMBRE  
VISTA FILING NO.5

KF 103-CV LLC.  
REC. NO. 206170929



THE RIDGE AT CUMBRE VISTA FILING NO. 1  
FINAL DRAINAGE PLAN  
JOB NO. 08-024  
DATE PREPARED: JANUARY 8, 2014  
DATE REVISED: SEPTEMBER 12, 2014



102 E. PIKES PEAK AVE., STE 306  
COLORADO SPRINGS,  
COLORADO 80903

v 719.235.5249  
f 719.444.8427