

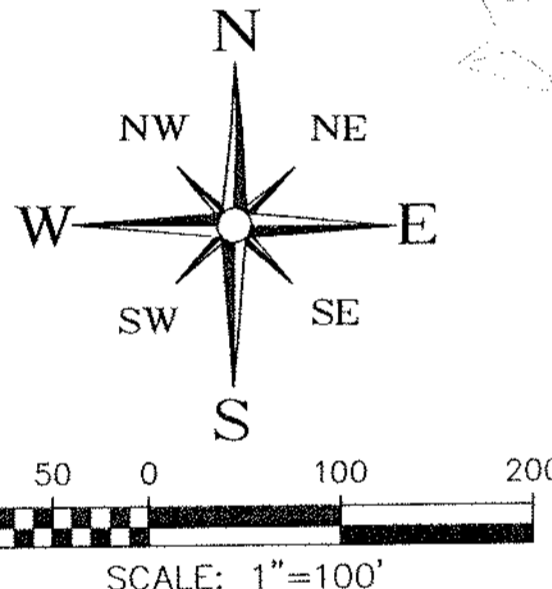
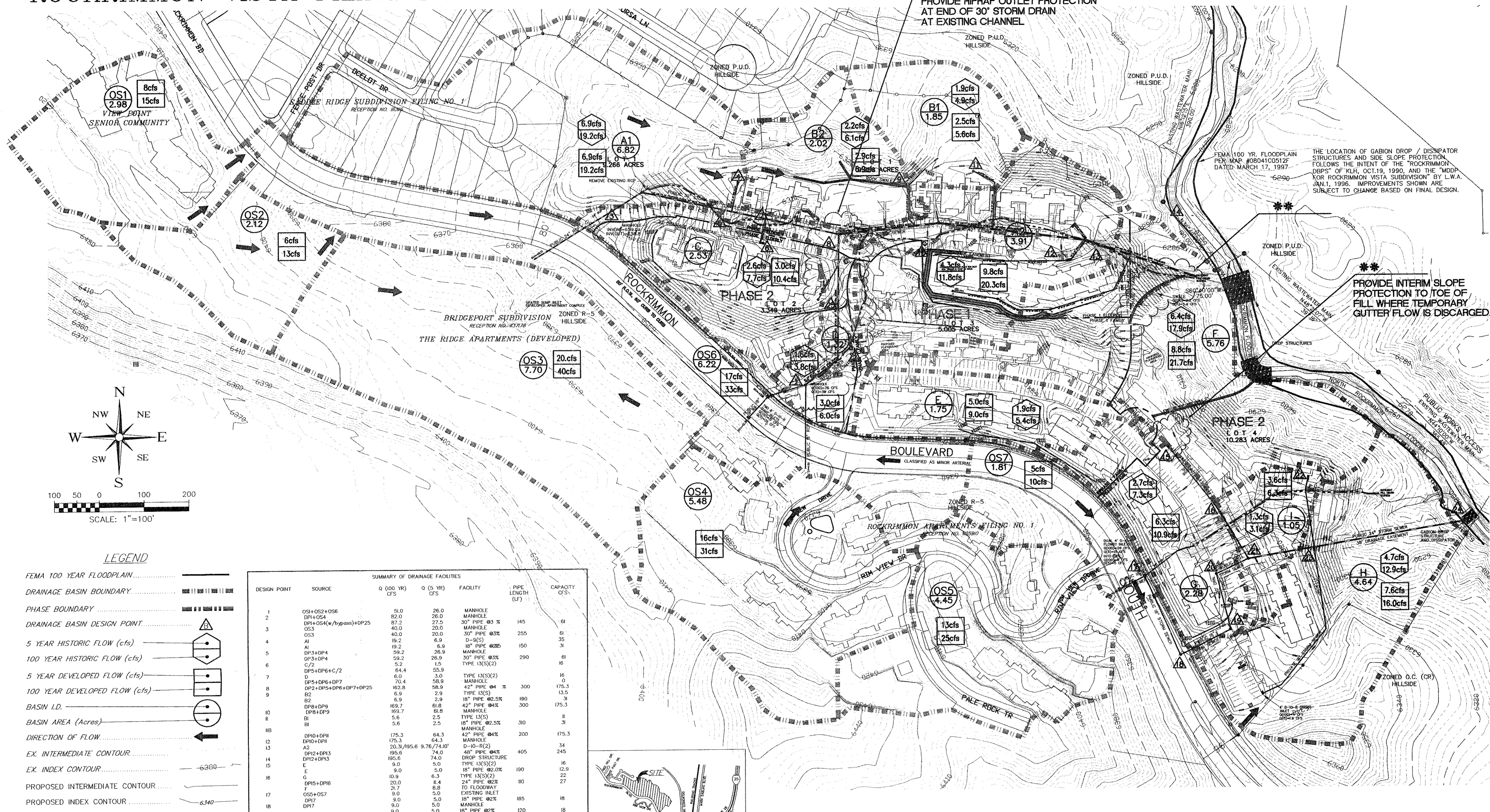
# DRAINAGE PLAN ROCKRIMMON VISTA FILING NO. 2

\*\* REQUIRED CONSTRUCTION FOR  
PHASE I-A, LOT 3  
PROVIDE RIPRAP OUTLET PROTECTION  
AT END OF 30" STORM DRAIN  
AT EXISTING CHANNEL

FEMA 100 YR. FLOODPLAIN  
PER MAP #0604100512F  
DATED MARCH 17, 1997

THE LOCATION OF GABION DROP / DISSIPATOR  
STRUCTURES AND SIDE SLOPE PROTECTION  
FOLLOWS THE INTENT OF THE "ROCKRIMMON  
DIPPS" OF KLH, OCT.19, 1990, AND THE "MDP  
FOR ROCKRIMMON VISTA SUBDIVISION" BY L.W.A.  
JAN.1, 1996. IMPROVEMENTS SHOWN ARE  
SUBJECT TO CHANGE BASED ON FINAL DESIGN.

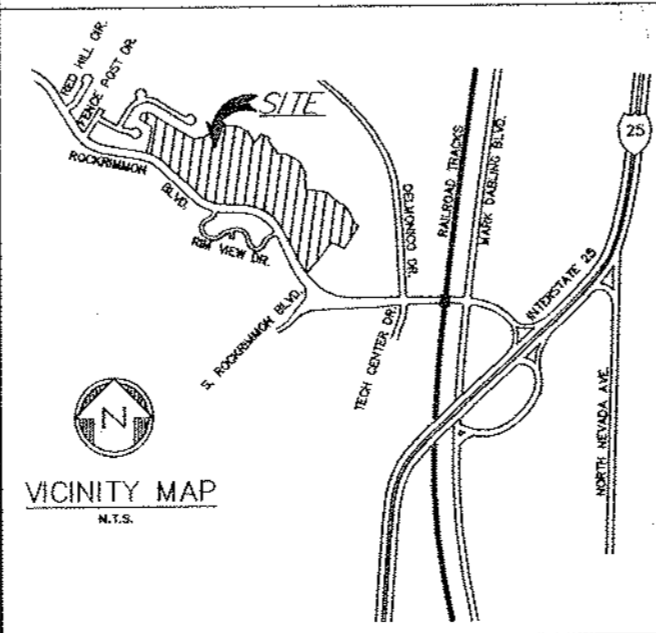
\*\* PROVIDE INTERIM SLOPE  
PROTECTION TO TOE OF  
FILL WHERE TEMPORARY  
GUTTER FLOW IS DISCHARGED.



### LEGEND

- FEMA 100 YEAR FLOODPLAIN
- DRAINAGE BASIN BOUNDARY
- PHASE BOUNDARY
- DRAINAGE BASIN DESIGN POINT
- 5 YEAR HISTORIC FLOW (cfs)
- 100 YEAR HISTORIC FLOW (cfs)
- 5 YEAR DEVELOPED FLOW (cfs)
- 100 YEAR DEVELOPED FLOW (cfs)
- BASIN I.D.
- BASIN AREA (Acres)
- DIRECTION OF FLOW
- EX. INTERMEDIATE CONTOUR
- EX. INDEX CONTOUR
- PROPOSED INTERMEDIATE CONTOUR
- PROPOSED INDEX CONTOUR
- PROPOSED STORM SEWER
- PROPOSED STORM SEWER EASEMENT
- PROPOSED FILL DRAIN SYSTEM
- SUMP INLET
- PROPOSED GABION STRUCTURE

SUMMARY OF DRAINAGE FACILITIES					
DESIGN POINT	SOURCE	Q (100 YR) CFS	Q (5 YR) CFS	FACILITY	CAPACITY CFS
1	OS1+OS2+OS6	51.0	26.0	MANHOLE	
2	DP1+OS4	82.0	26.0	MANHOLE	61
3	DP1+OS4(w/bypass)+DP25	87.2	27.5	30" PIPE @3%	145
3	OS3	40.0	20.0	MANHOLE	255
4	A1	19.2	6.9	D-9(S)	35
5	DP3+DP4	19.2	6.9	18" PIPE @2%	150
5	DP3+DP4	59.2	26.9	MANHOLE	
6	C/2	5.2	1.5	30" PIPE @3%	290
6	DP5+DP6+C/2	64.4	25.9	TYPE 13(S)(2)	16
7	D	6.0	3.0	TYPE 13(S)(2)	16
7	DP5+DP6+DP7	70.4	58.9	MANHOLE	175.3
8	DP2+DP5+DP6+DP7+DP25	102.8	42.4	42" PIPE @4%	300
9	B2	6.9	2.9	TYPE 13(S)	13.5
9	B2	6.9	2.9	18" PIPE @2.5%	190
9	B2	169.7	61.8	42" PIPE @4%	300
10	DP8+DP9	169.7	61.8	MANHOLE	175.3
11	B1	5.6	2.5	TYPE 13(S)	11
11	B1	5.6	2.5	18" PIPE @2.5%	30
11B	DP10+DP11	175.3	64.3	42" PIPE @4%	200
12	DP10+DP11	175.3	64.3	MANHOLE	175.3
13	A2	23.3/195.6	9.76/74.0*	D-10-R(2)	34
14	DP12+DP13	195.6	74.0	48" PIPE @4%	405
14	DP12+DP13	195.6	74.0	DROP STRUCTURE	16
15	E	9.0	5.0	TYPE 13(S)(2)	12.9
15	E	9.0	5.0	18" PIPE @2.0%	190
16	G	10.9	6.3	TYPE 13(S)(2)	22
16	G	20.0	11.4	24" PIPE @2%	180
17	DP15+DP16	27.7	16.4	TO FLOWWAY	
18	OS5+OS7	9.0	5.0	EXISTING INLET	18
18	DP17	9.0	5.0	18" PIPE @2%	120
19	DP17	9.0	5.0	MANHOLE	170
20	DP17	9.0	5.0	MANHOLE	170
20	DP17	9.0	5.0	18" PIPE @5%	75
21	DP15+DP16+DP20	29.0	16.4	MANHOLE	190
21	DP15+DP16+DP20	29.0	16.4	24" PIPE @8%	56
22	I	6.3	3.6	TYPE 13(S)	11
23	I	6.3	3.6	18" PIPE @%	215
23	DP21+DP22	35.2	20.0	MANHOLE	57
24	DP21+DP22	35.2	20.0	24" PIPE @ 8%	450
24	DP21+DP22	35.2	20.0	DROP STRUCTURE	
24	H	16.0	7.6	TO FLOWWAY	
25	C/2	5.2	1.5	TYPE 13(S)	11
25	C/2	5.2	1.5	18" PIPE @%	45



**LAW & MARIOTTI CONSULTANTS, INC.**  
CIVIL ENGINEERING - LAND SURVEYING  
619 N. Cascade Ave., Suite 208, Colorado Springs, CO 80903  
719.442.1541 voice 719.442.1542 fax

Revisions - Date	Date	Drawn By	Job No.
	4-5-01	D.G.P.	99-019
		Checked By	Drawing No.
		B.T.L.	99-019

L:\99-019\Drainage Plan\99-019.dwg Mon Jun 18 09:46:19 2001 DGP