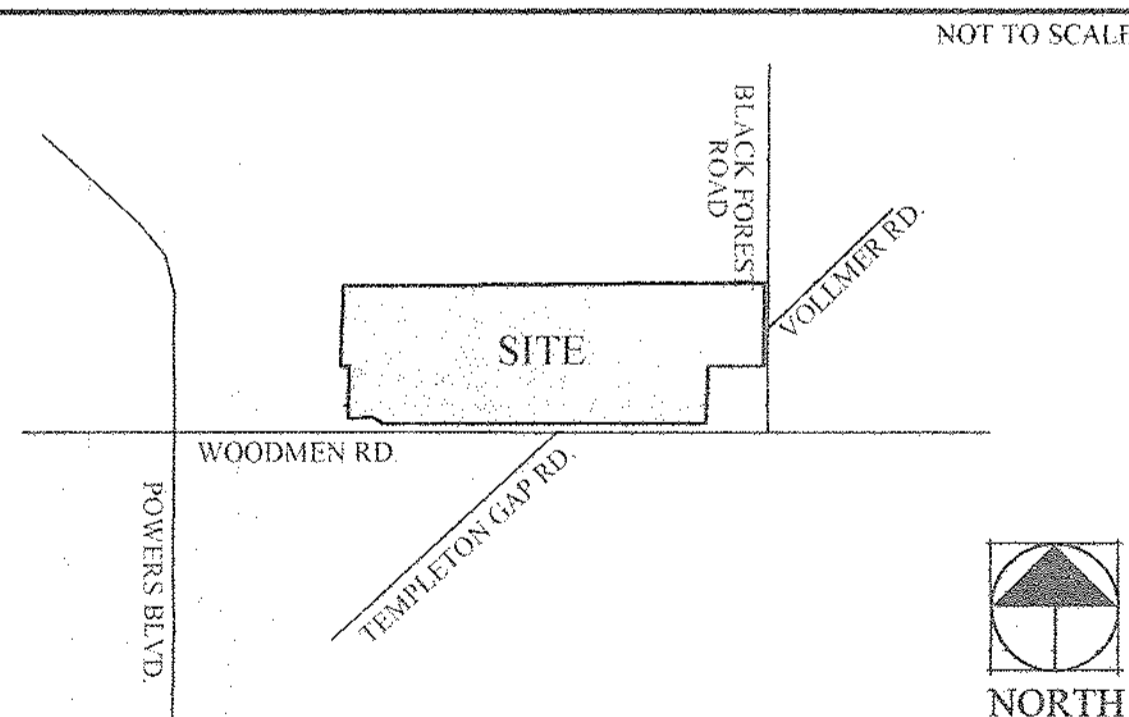


# HISTORIC AND DEVELOPED DRAINAGE BASIN MAP:

## VICINITY MAP:



Rational Method

Given Input Data:  
Description: THE RIDGE AT WOODMEN (REEL ADDITION) - 5 YR HISTORIC

Design Point	Areas Included	Total ac	Coef	Tc min	Intensity in/hr	Flow cfs
SUB-BASINS WITHIN COTTONWOOD CREEK DRAINAGE BASIN:						
DP-1	CC-H1	8.3200	0.15	15.51	3.02	3.8
DP-2	CC-H2	5.3900	0.15	13.66	3.20	2.5
DP-3	CC-H3	8.1500	0.15	15.29	2.04	3.7
DP-4	CC-H4	10.6300	0.15	16.52	2.93	4.7
DP-5	CC-H5	2.9000	0.15	13.59	3.21	1.4
DP-6	CC-H6, CC-H5	20.7200	0.15	19.32	2.70	8.4
SUB-BASINS WITHIN SAND CREEK DRAINAGE BASIN:						
DP-7	SC-H1	9.9100	0.15	13.52	3.22	4.8
DP-8	SC-H2	2.9600	0.15	14.36	3.13	1.4
DP-9 DS	SC-H4	5.6300	0.66	14.98	3.07	11.3
DP-10	SC-H2, SC-H3, SC-H4	54.8800	0.15	22.67	2.48	20.5

Rational Method

Given Input Data:  
Description: THE RIDGE AT WOODMEN (REEL ADDITION) - 5 YR DEVELOPED

Design Point	Areas Included	Total ac	Coef	Tc min	Intensity in/hr	Flow cfs
SUB-BASINS WITHIN COTTONWOOD CREEK DRAINAGE BASIN:						
DP-1	CC-D1	8.3200	0.75	15.51	3.02	18.8
DP-2	CC-D2	5.3900	0.75	13.66	3.20	12.7
DP-3	CC-D3	8.1500	0.75	15.29	3.04	18.6
DP-4	CC-D4	10.6300	0.75	16.52	2.93	23.3
DP-5	CC-D5	2.9000	0.75	13.59	3.21	7.0
DP-6	CC-D6, CC-D5	20.7200	0.75	19.32	2.70	42.0
SUB-BASINS WITHIN SAND CREEK DRAINAGE BASIN:						
DP-7	SC-D1	9.9100	0.75	13.52	3.22	23.9
DP-8	SC-D3	2.9600	0.75	14.36	3.13	6.9
DP-9 DS	SC-D4	5.6300	0.66	14.98	3.07	11.3
DP-10	SC-D2, SC-D3, SC-D4	54.8800	0.75	22.67	2.48	102.2

Rational Method

Given Input Data:  
Description: THE RIDGE AT WOODMEN (REEL ADDITION) - 100 YR HISTORIC

Design Point	Areas Included	Total ac	Coef	Tc min	Intensity in/hr	Flow cfs
SUB-BASINS WITHIN COTTONWOOD CREEK DRAINAGE BASIN:						
DP-1	CC-H1	8.3200	0.20	15.51	5.61	9.7
DP-2	CC-H2	5.3900	0.20	13.66	6.16	6.5
DP-3	CC-H3	8.1500	0.20	15.29	5.85	9.5
DP-4	CC-H4	10.6300	0.20	16.52	5.63	12.0
DP-5	CC-H5	2.9000	0.20	13.59	6.18	3.6
DP-6	CC-H6, CC-H5	20.7200	0.20	19.32	5.21	21.6
SUB-BASINS WITHIN SAND CREEK DRAINAGE BASIN:						
DP-7	SC-H1	9.9100	0.20	13.52	6.19	12.3
DP-8	SC-H2	2.9600	0.20	14.36	6.02	3.6
DP-9 DS	SC-H4	5.6300	0.75	14.98	5.91	25.0
DP-10	SC-H2, SC-H3, SC-H4	54.8800	0.20	22.67	4.78	52.5

Rational Method

Given Input Data:  
Description: THE RIDGE AT WOODMEN (REEL ADDITION) - 100 YR DEVELOPED

Design Point	Areas Included	Total ac	Coef	Tc min	Intensity in/hr	Flow cfs
SUB-BASINS WITHIN COTTONWOOD CREEK DRAINAGE BASIN:						
DP-1	CC-D1	8.3200	0.80	15.51	5.81	38.7
DP-2	CC-D2	5.3900	0.80	13.66	6.16	26.1
DP-3	CC-D3	8.1500	0.80	15.29	5.85	38.1
DP-4	CC-D4	10.6300	0.80	16.52	5.63	47.9
DP-5	CC-D5	2.9000	0.80	13.59	6.18	14.3
DP-6	CC-D6, CC-D5	20.7200	0.80	19.32	5.21	86.3
SUB-BASINS WITHIN SAND CREEK DRAINAGE BASIN:						
DP-7	SC-D1	9.9100	0.80	13.52	6.19	49.1
DP-8	SC-D3	2.9600	0.80	14.36	6.02	14.3
DP-9 DS	SC-D4	5.6300	0.75	14.98	5.91	25.0
DP-10	SC-D2, SC-D3, SC-D4	54.8800	0.80	22.67	4.78	210.0

LAW & MARIOTTI  
LMCI CONSULTANTS, INC.  
CIVIL ENGINEERING - LAND SURVEYING  
409 N. Colorado Ave., Suite 205 • Colorado Springs, CO 80901  
719.442.5141 • www.lmci.com

LEGEND

DRAINAGE BASIN H 7.7  
 ACREAGE  
 DESIGN POINT 1  
 OFFSITE DRAINAGE POINT 1 OS  
 DRAINAGE BASIN BOUNDARY   
 DIRECTION OF FLOW   
 EXISTING CULTVERT   
 WATER QUALITY & DETENTION POND (AREA AND VOLUME NOT DEFINED) FINAL LOCATION TO BE DETERMINED AT PLATTING.

DETENTION POND DATA

POND LOCATION	FLOW CFS 5/100YR (IN)	FLOW CFS 5/100YR (OUT)	VOLUME EST. AC. FT.
DP-1	18.8/38.7	3.8/9.7	0.9
DP-2	12.7/26.1	2.5/6.5	0.6
DP-3	18.6/38.1	3.7/9.5	0.9
DP-4	23.3/47.9	4.7/12.0	1.1
DP-5	42.0/86.3	8.4/21.6	2.2
DP-6	23.9/49.1	4.8/12.3	1.1
DP-10	102.2/210.0	20.5/52.5	5.1

# HISTORIC AND DEVELOPED DRAINAGE BASIN MAP FOR: the RIDGE at WOODMEN

THOMAS THOMAS  
Planning  
Landscape Architecture  
618 North Tejon  
Colorado Springs, Colorado 80903  
(719) 578-8777

DRAINAGE BASIN MAP FOR:  

## the RIDGE at WOODMEN

REV #	DATE	DRAWN	DESIGNED	CHECKED	APPROVED	STREET REALIGNMENT	
						RLG	PCT
1	07-14-03	RLG	PCT				

DESIGNED: RLG 12.18.02

DRAWN: RLG 12.18.02

CHECKED: PCT 12.18.02

PROJECT NUMBER: 2142.00

SCALE: 1" = 200'

MP1