

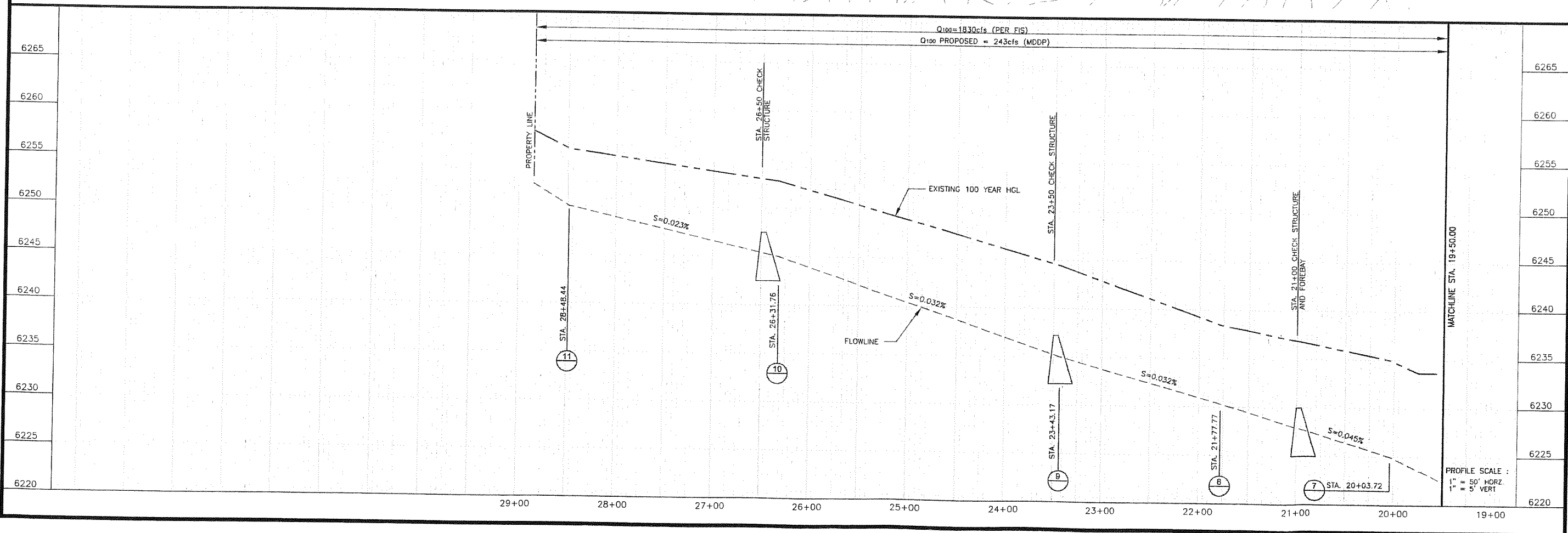
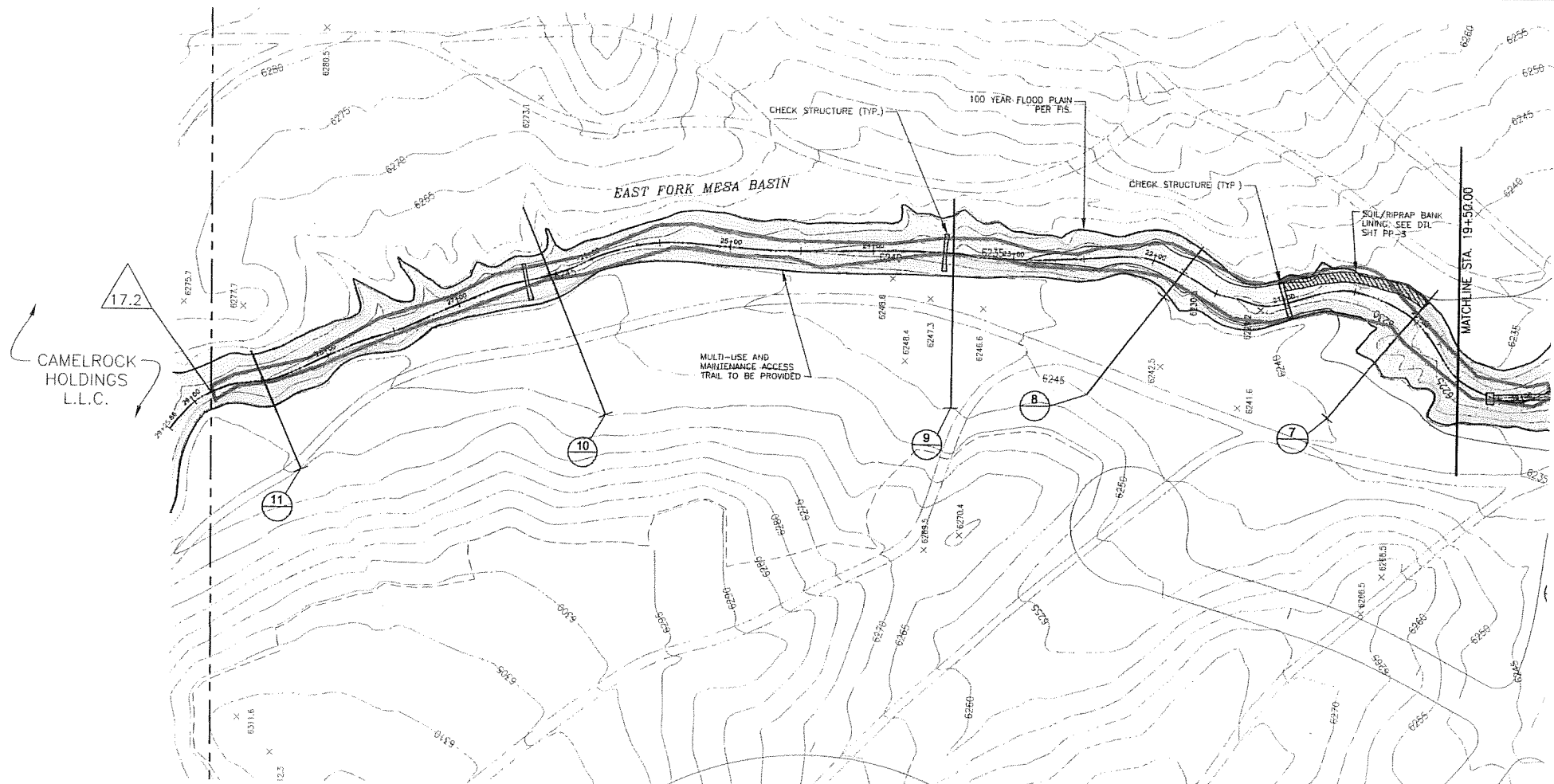
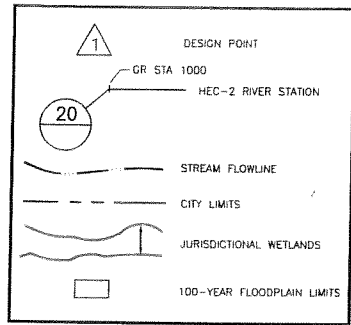
**Kiowa Engineering Corporation**  
 1604 South 21st Street  
 Colorado Springs, Colorado 80904  
 (719) 630-7342

**SENTINEL RIDGE**  
**MASTER DEVELOPMENT DRAINAGE PLAN**  
**EAST FORK MESA BASIN PLAN AND PROFILE**  
 COLORADO SPRINGS, COLORADO

Project No.:	07028
Date:	SEPTEMBER 2008
Design:	RNW
Drawn:	MFA
Check:	RNW
Revisions:	

SHEET  
**PP-1**  
 OF X SHEETS

07028-PP1-4.dwg/01 01, 2008

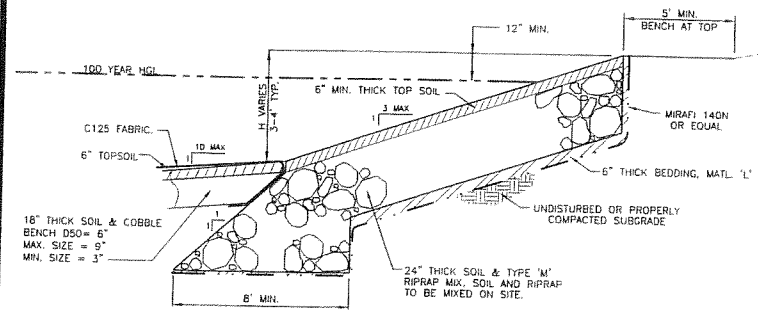


**Kiowa Engineering Corporation**  
 1604 South 21st Street  
 Colorado Springs, Colorado 80904  
 (719) 630-7342

**SENTINEL RIDGE**  
**MASTER DEVELOPMENT DRAINAGE PLAN**  
**EAST FORK MESA BASIN PLAN AND PROFILE**  
 COLORADO SPRINGS, COLORADO

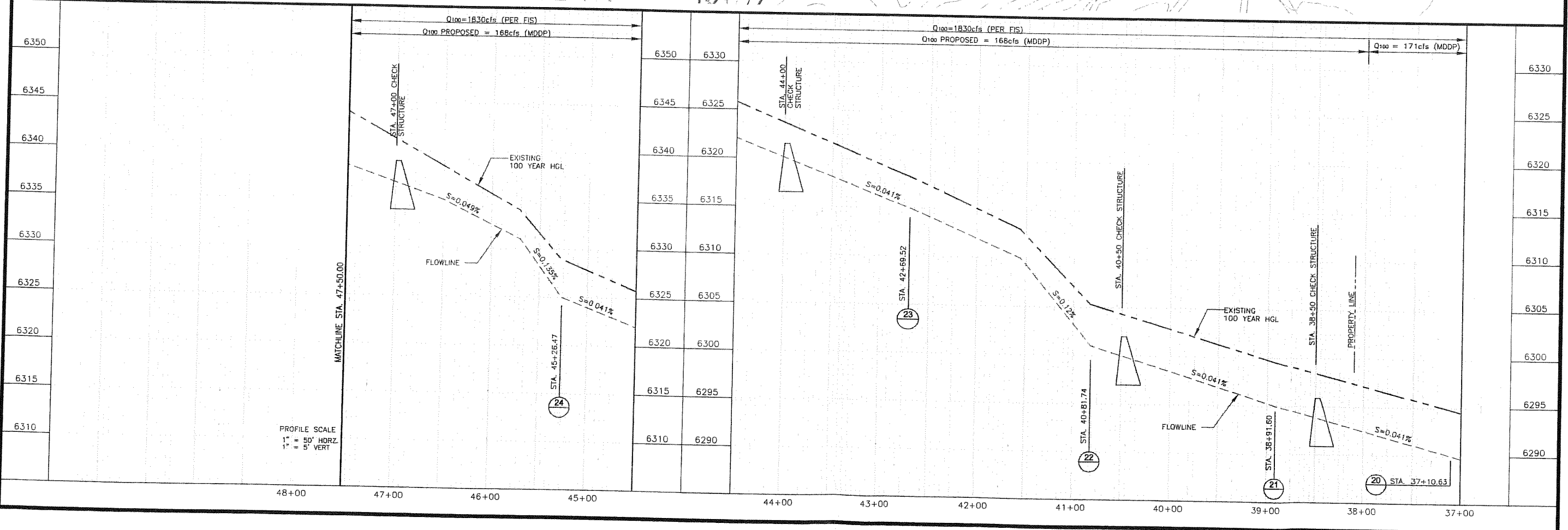
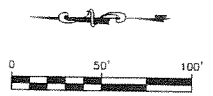
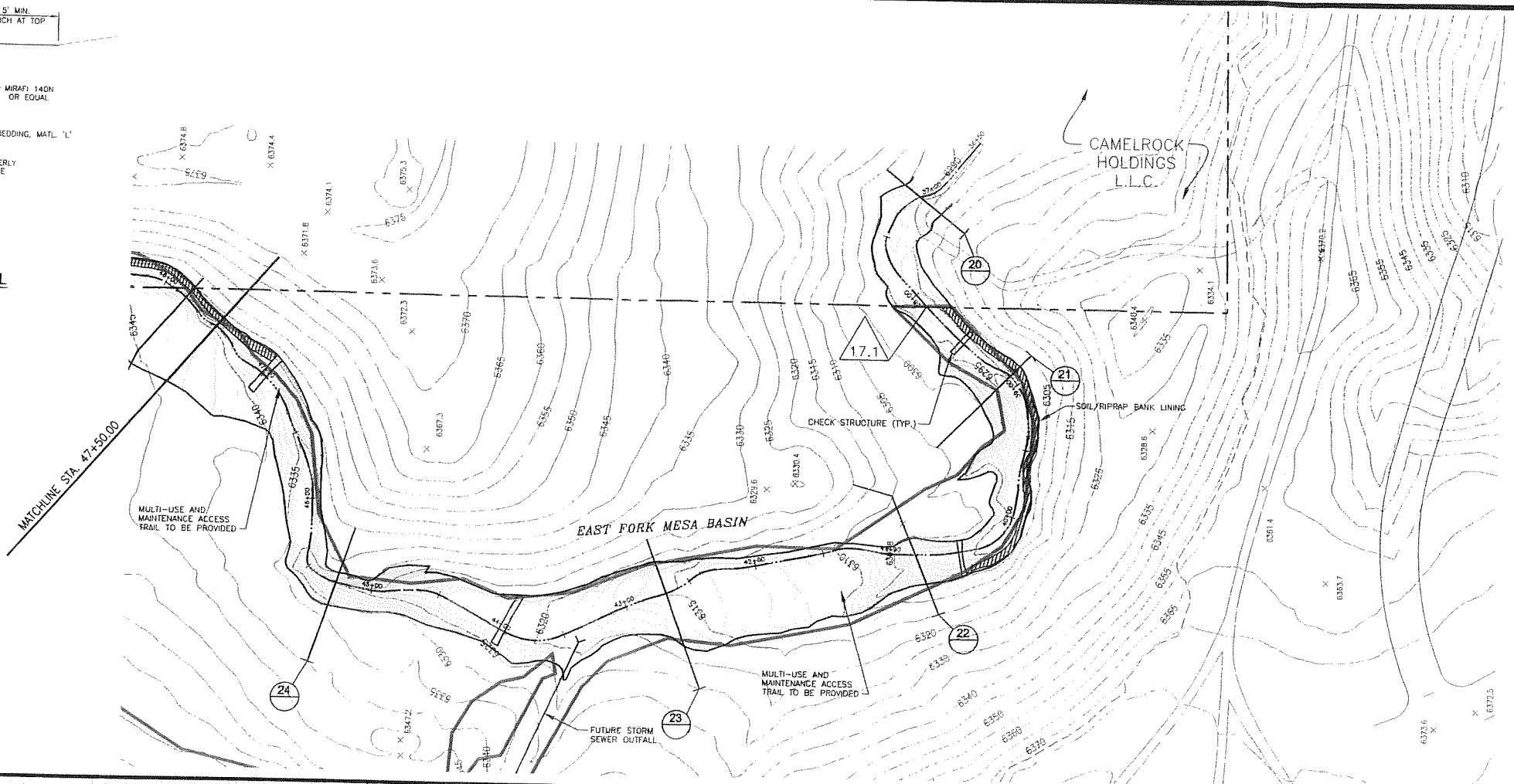
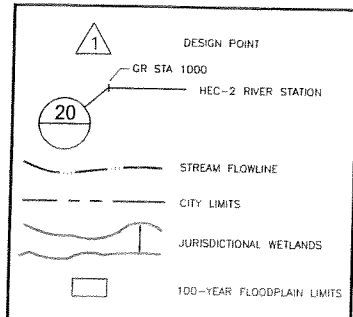
Project No.: 07028  
 Date: SEPTEMBER 2008  
 Design: RNW  
 Drawn: MFA  
 Check: RNW  
 Revisions:

SHEET  
**PP-2**  
 OF X SHEETS



TYPICAL CHANNEL BANK LINING DETAIL  
SCALE: 1/4" = 1'

- SOIL/RIPRAP NOTES:**
1. SOIL USED TO MIX WITH RIPRAP SHALL BE CLEAN, WELL GRADED NATIVE SOIL FREE OF ROOTS, DEBRIS AND OTHER DELETERIOUS MATERIALS. STOCKPILE OF SOIL TO BE USED FOR SOIL/RIPRAP BANK LININGS TO BE APPROVED BY THE ENGINEER.
  2. SOIL SHALL BE MIXED WITH RIPRAP AND STOCKPILED PRIOR TO PLACEMENT. SOIL/RIPRAP STOCKPILE TO BE APPROVED BY ENGINEER.
  3. NO MORE THAN 25% OF THE VOLUME OF THE SOIL/RIPRAP MIXTURE SHALL BE CLEAN NATIVE SOIL MATERIAL.

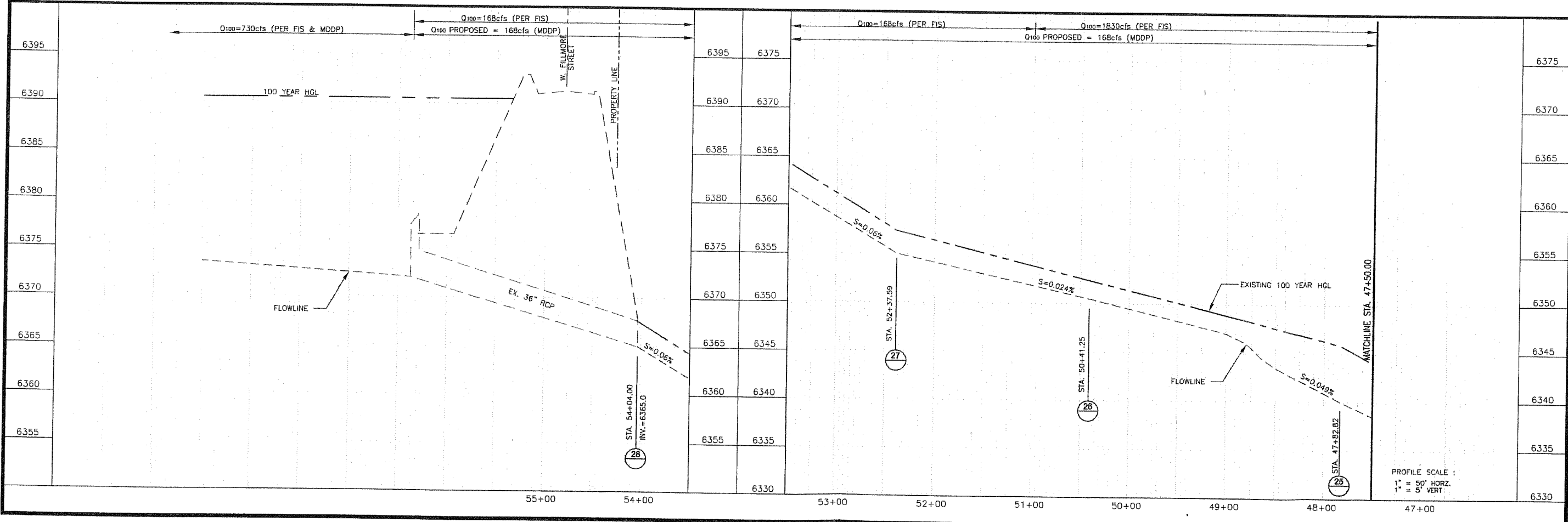
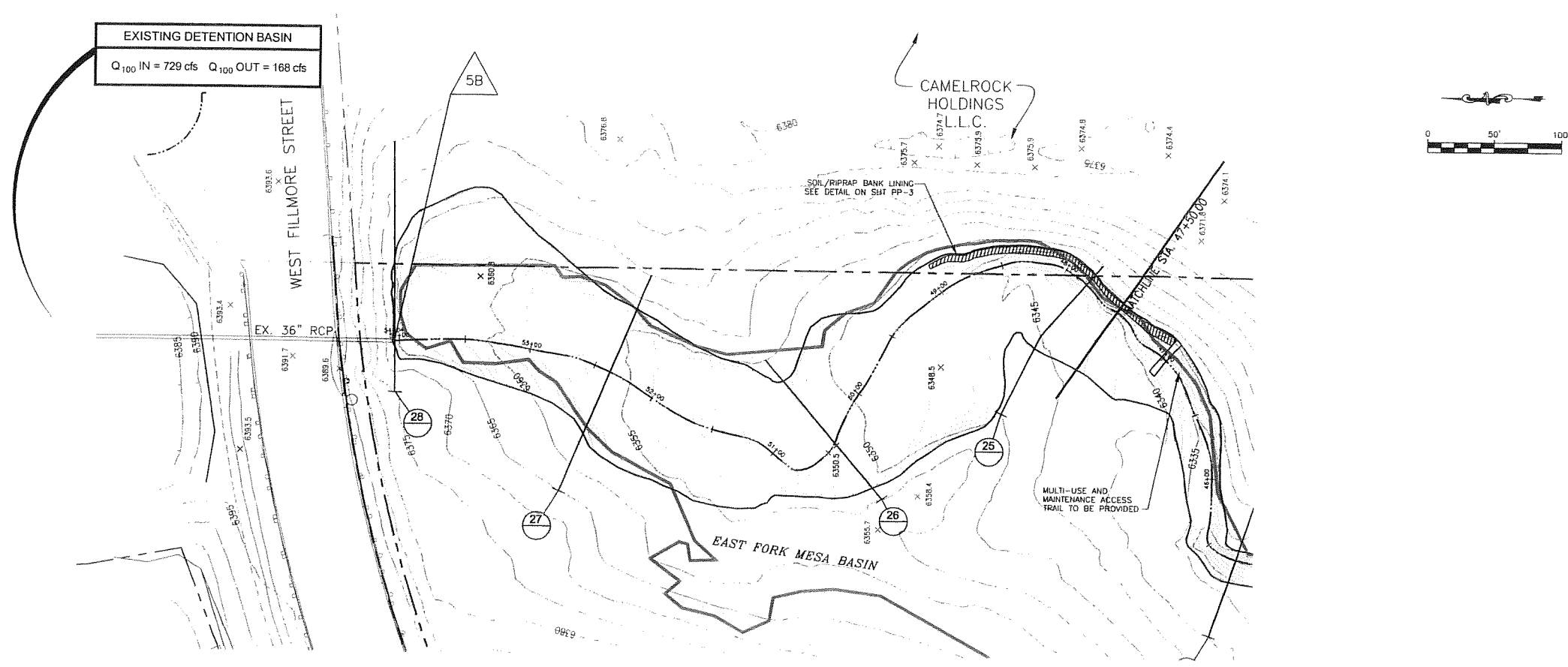
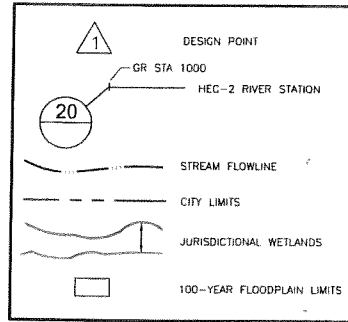


**Kiowa Engineering Corporation**  
1604 South 21st Street  
Colorado Springs, Colorado 80904  
(719) 630-7342

**SENTINEL RIDGE**  
**MASTER DEVELOPMENT DRAINAGE PLAN**  
**EAST FORK MESA BASIN PLAN AND PROFILE**  
COLORADO SPRINGS, COLORADO

Project No.:	0702B
Date:	SEPTEMBER 2008
Design:	RNW
Drawn:	MFA
Check:	RNW
Revisions:	

SHEET  
**PP-3**  
OF X SHEETS



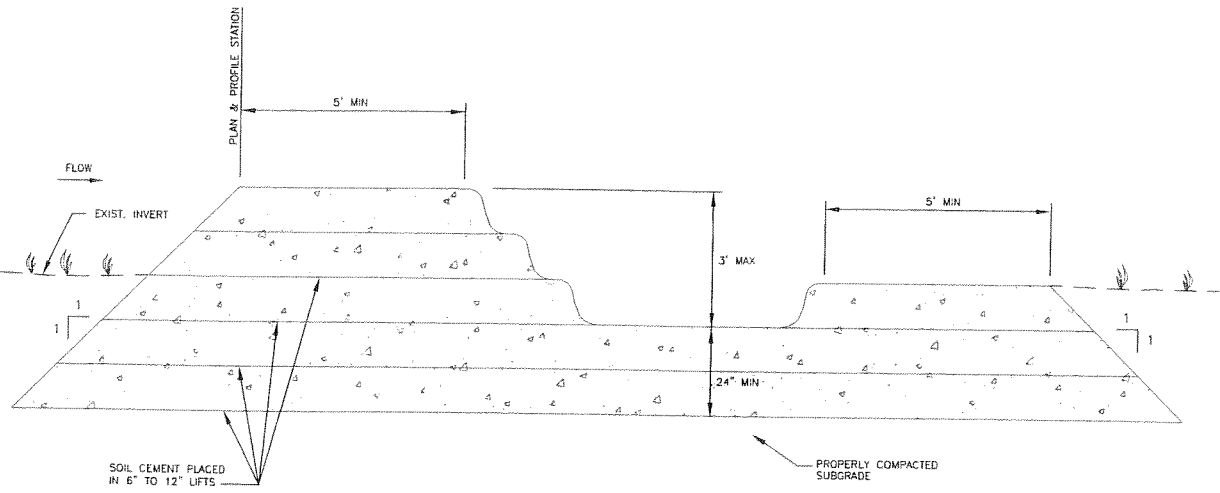
**SENTINEL RIDGE**  
**MASTER DEVELOPMENT DRAINAGE PLAN**  
**EAST FORK MESA BASIN PLAN AND PROFILE**  
 COLORADO SPRINGS, COLORADO

Project No.: 07028  
 Date: SEPTEMBER 2008  
 Design: RNW  
 Drawn: MFA  
 Check: RNW  
 Revisions:

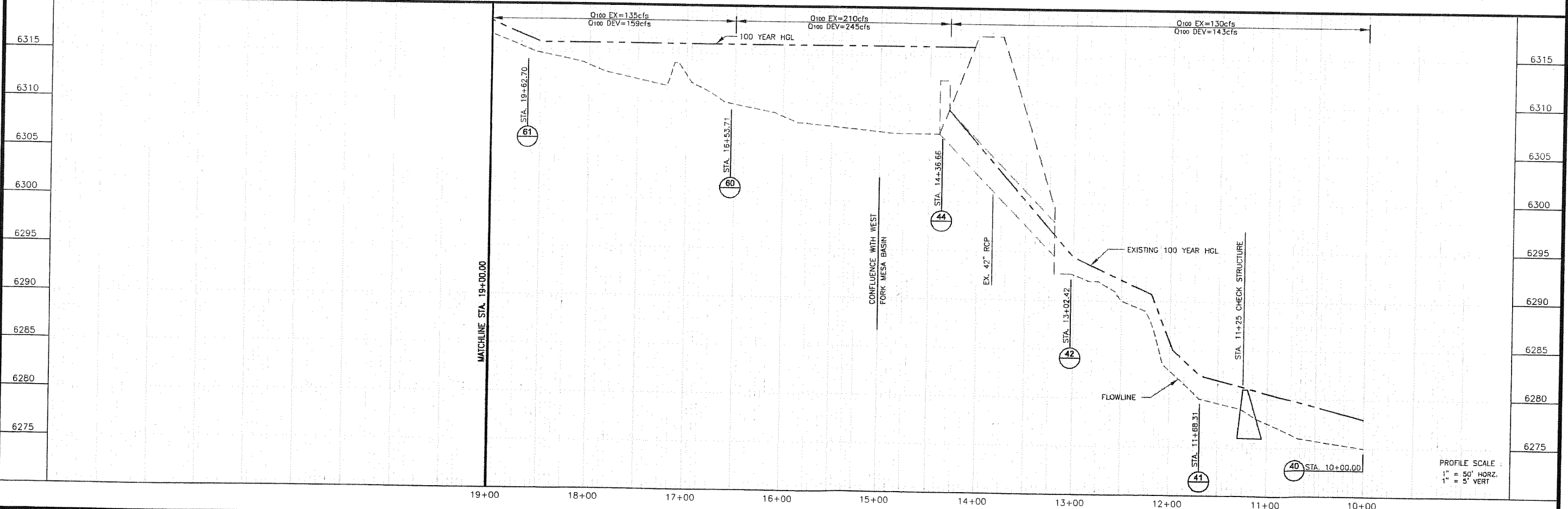
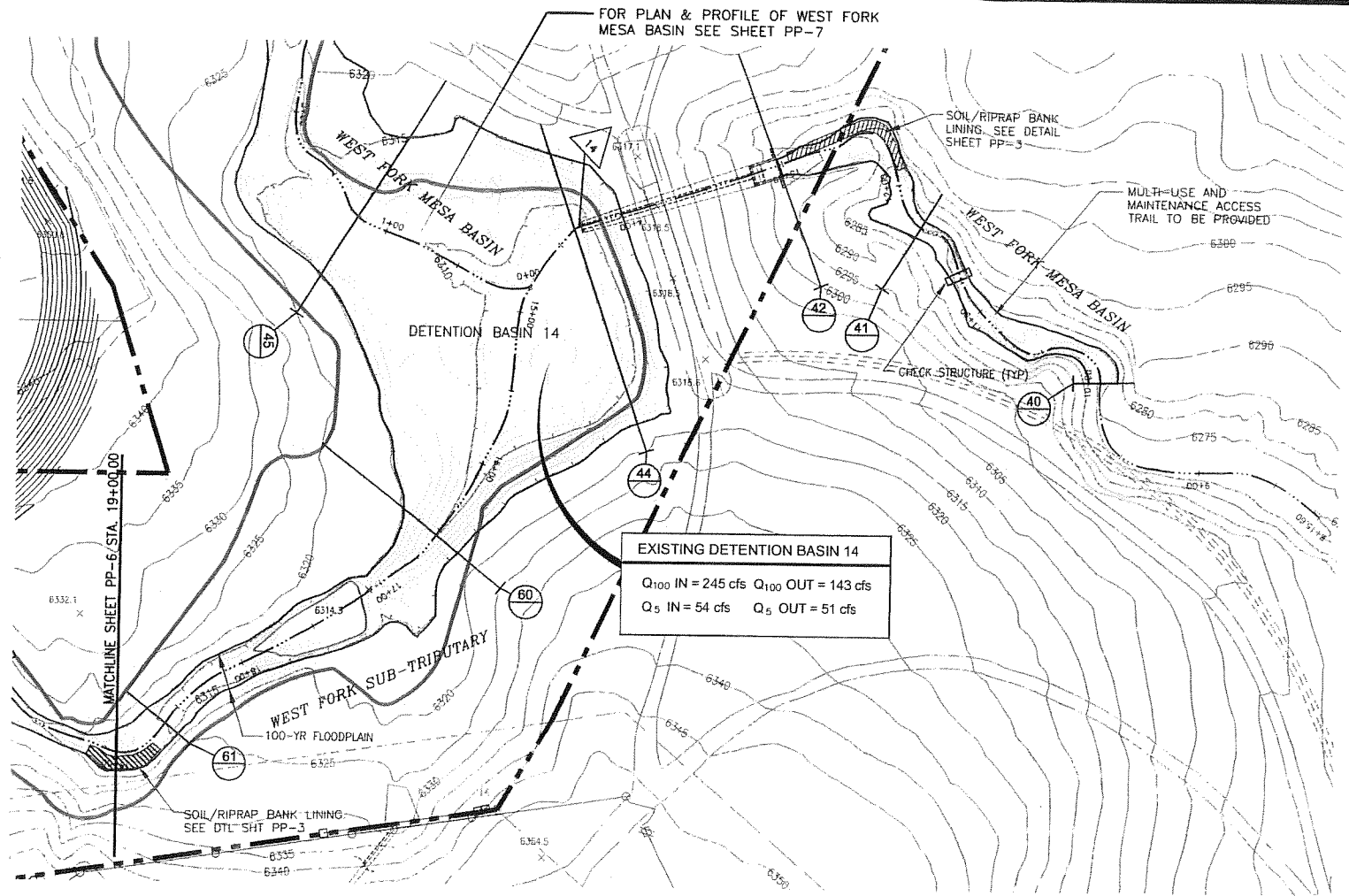
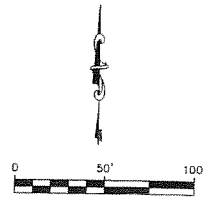
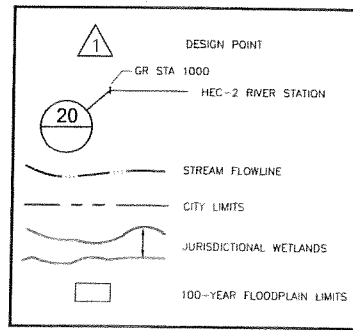
SHEET  
**PP-4**  
 OF X SHEETS

**Kiowa Engineering Corporation**  
 1604 South 21st Street  
 Colorado Springs, Colorado 80904  
 (719) 630-7342

D:\028-PP1-1.dwg/Sep 09, 2008



**CHECK STRUCTURE DETAIL**  
TYPICAL  
SCALE: 1"=2'-0"



PROFILE SCALE:  
1" = 50' HORZ.  
1" = 5' VERT

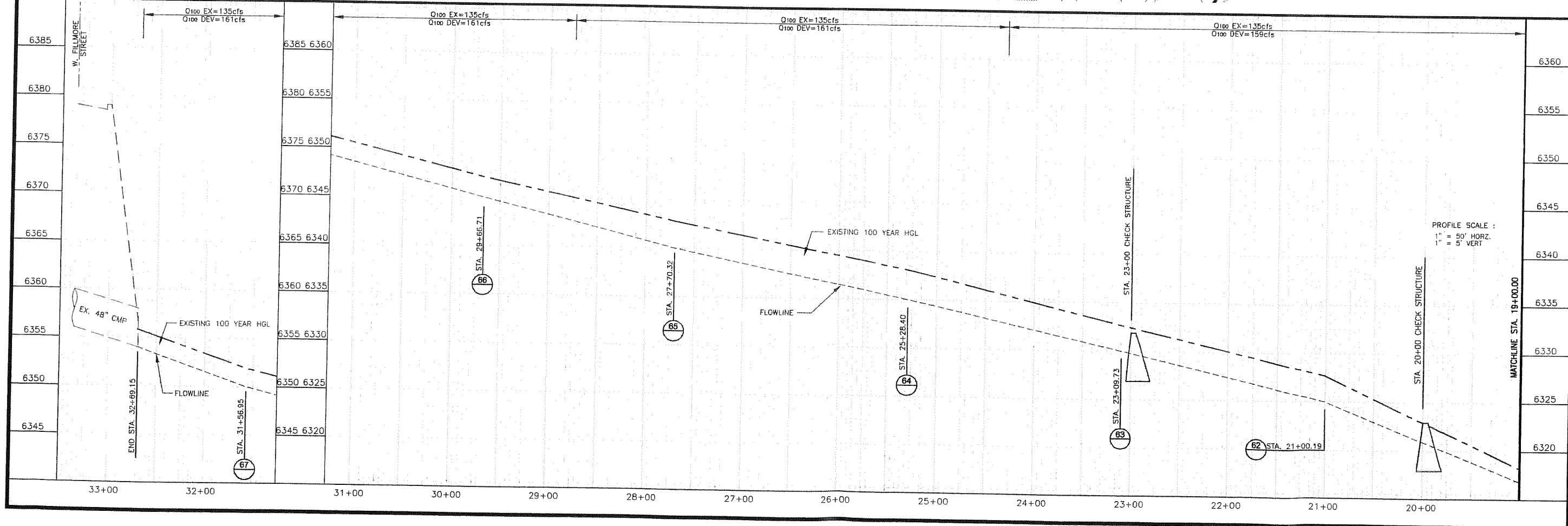
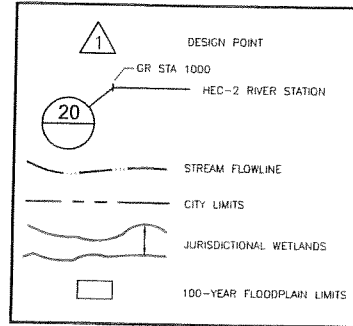
**Kiowa Engineering Corporation**  
1604 South 21st Street  
Colorado Springs, Colorado 80904  
(719) 630-7342

**SENTINEL RIDGE**  
MASTER DEVELOPMENT DRAINAGE PLAN  
WEST FORK SUB-TRIBUTARY MESA BASIN  
PLAN AND PROFILE  
COLORADO SPRINGS, COLORADO

Project No.:	07028
Date:	SEPTEMBER 2008
Design:	RNW
Drawn:	MFA
Check:	RNW
Revisions:	

SHEET  
**PP-5**  
OF X SHEETS

07028-PP5-7.dwg/Oct 01, 2008



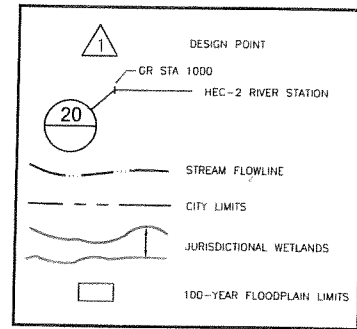
**Kiowa Engineering Corporation**  
 1604 South 21st Street  
 Colorado Springs, Colorado 80904  
 (719) 630-7342

**SENTINEL RIDGE**  
 MASTER DEVELOPMENT DRAINAGE PLAN  
 WEST FORK SUB-TRIBUTARY MESA BASIN  
 PLAN AND PROFILE  
 COLORADO SPRINGS, COLORADO

Project No.:	07028
Date:	SEPTEMBER 2008
Design:	RNW
Drawn:	MFA
Check:	RNW
Revisions:	

SHEET  
**PP-6**  
 OF X SHEETS

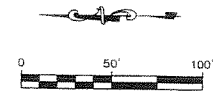
07028-PP-6-7.6x9/Oct 01, 2008



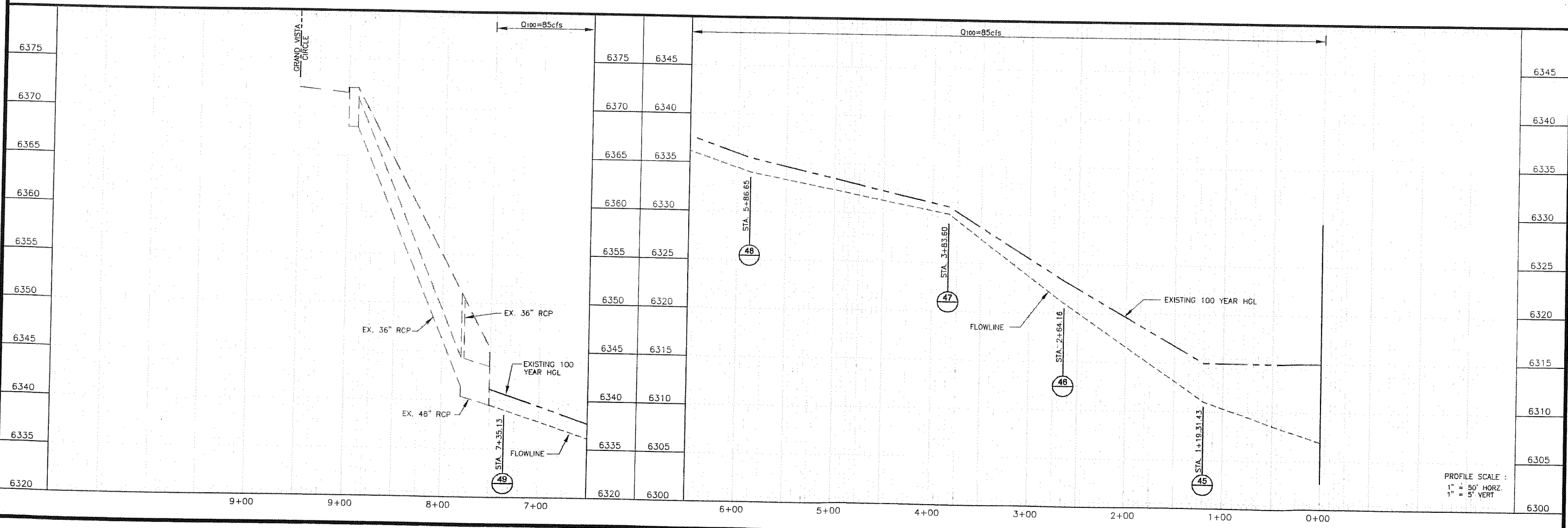
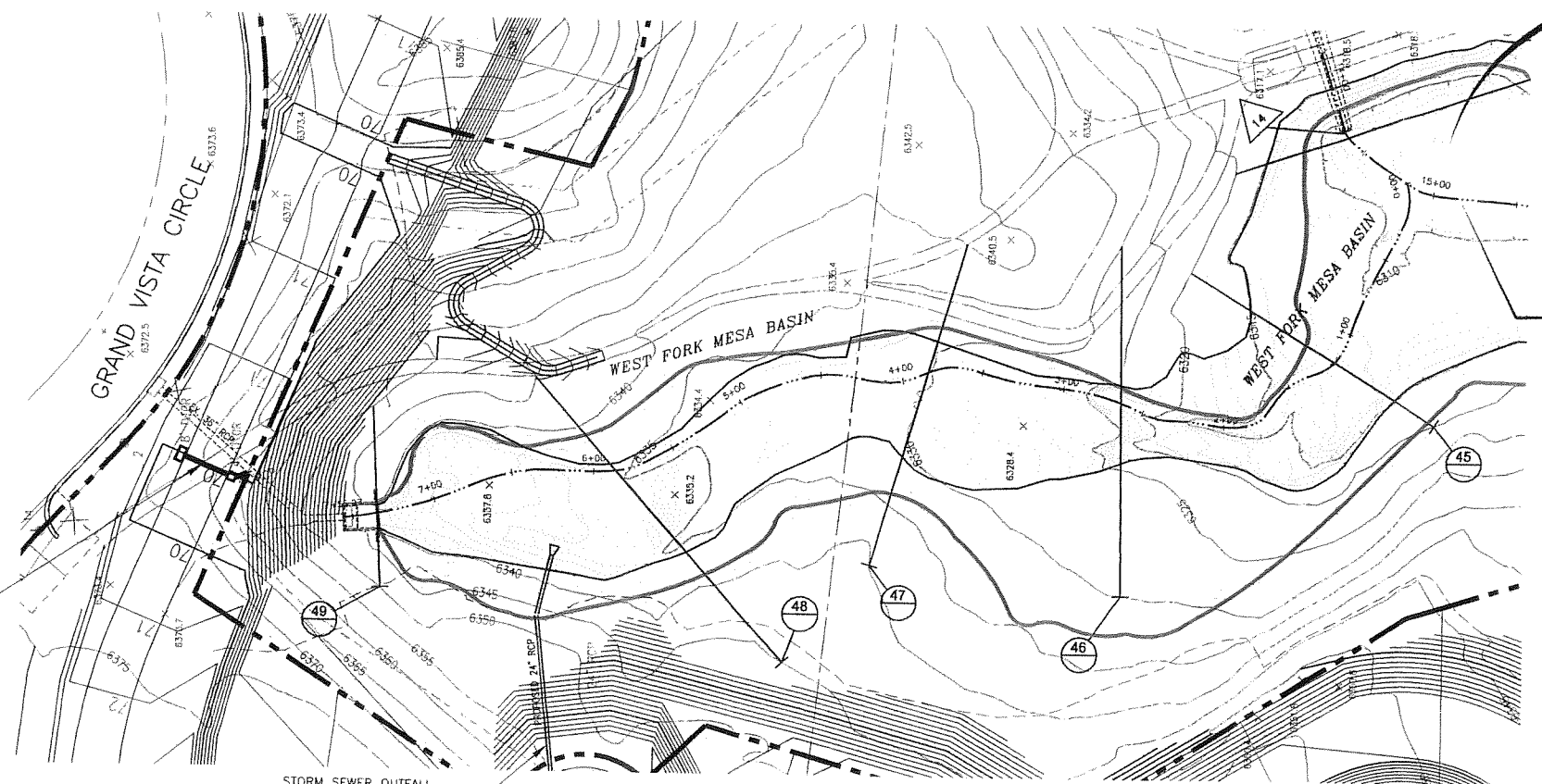
PROVIDE INLETS AND STORM SEWERS FOR CONNECTION TO EXIST. 36" RCP

STORM SEWER OUTFALL FROM FILING 1 SUBDIVISION

EXISTING DETENTION BASIN 14  
 $Q_{100} \text{ IN} = 245 \text{ cfs}$   $Q_{100} \text{ OUT} = 143 \text{ cfs}$   
 $Q_5 \text{ IN} = 54 \text{ cfs}$   $Q_5 \text{ OUT} = 51 \text{ cfs}$



FOR PLAN & PROFILE OF WEST FORK SUB-TRIBUTARY SEE SHEETS PP-5 & PP-6



PROFILE SCALE :  
 1" = 50' HORZ.  
 1" = 5' VERT

SENTINEL RIDGE  
 MASTER DEVELOPMENT DRAINAGE PLAN  
 WEST FORK MESA BASIN  
 PLAN AND PROFILE  
 COLORADO SPRINGS, COLORADO

Project No.: 07028  
 Date: SEPTEMBER 2008  
 Design: RNW  
 Drawn: MFA  
 Check: RNW  
 Revisions:

SHEET  
**PP-7**  
 OF X SHEETS

Kiowa Engineering Corporation  
 1604 South 21st Street  
 Colorado Springs, Colorado 80904  
 (719) 630-7342