

PROPOSED REGIONAL
DETENTION POND #3

WOODMEN HEIGHTS
COMMERCIAL CENTER
(PROPOSED)

100-YR
FLOODPLAIN

PROPOSED
MARKSHEFFEL ROAD
ALIGNMENT

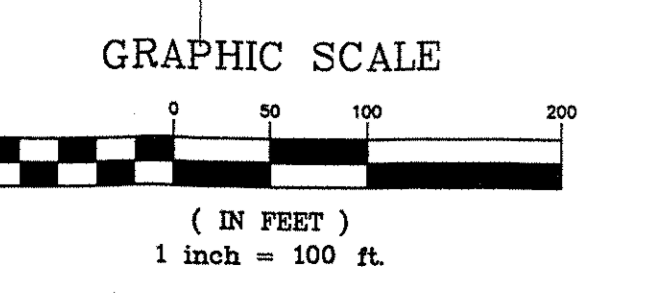
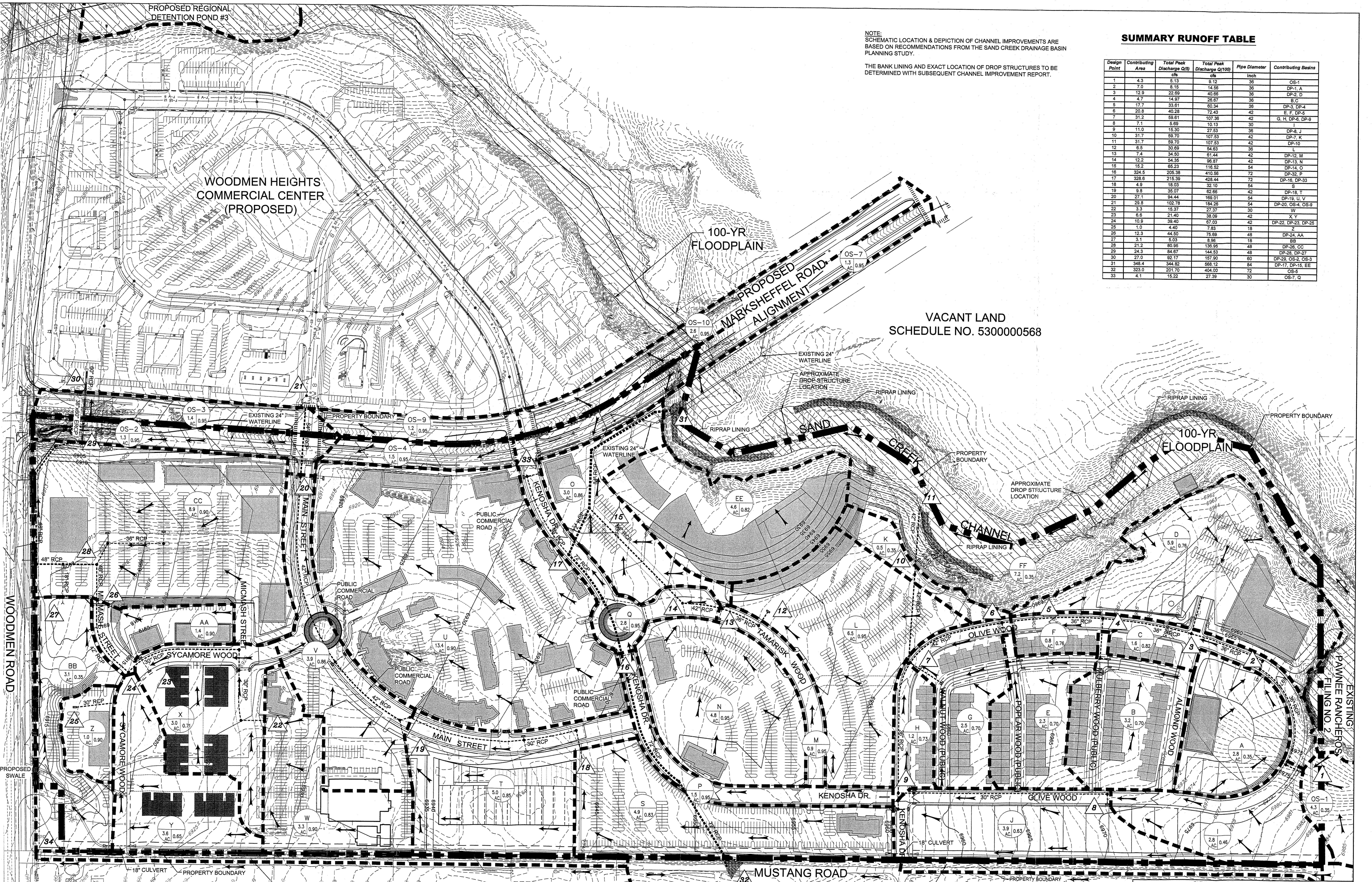
VACANT LAND
SCHEDULE NO. 5300000568

NOTE:
SCHEMATIC LOCATION & DEPICTION OF CHANNEL IMPROVEMENTS ARE
BASED ON RECOMMENDATIONS FROM THE SAND CREEK DRAINAGE BASIN
PLANNING STUDY.

THE BANK LINING AND EXACT LOCATION OF DROP STRUCTURES TO BE
DETERMINED WITH SUBSEQUENT CHANNEL IMPROVEMENT REPORT.

SUMMARY RUNOFF TABLE

Design Point	Contributing Area	Total Peak Discharge Q(9)	Total Peak Discharge Q(100)	Pipe Diameter	Contributing Basins
		cfs	cfs	Inch	
1	4.3	5.13	9.12	36	OS-1
2	7.0	8.15	14.56	36	DP-1, A
3	12.9	22.89	40.65	36	DP-2, D
4	4.7	14.97	26.67	36	B, C
5	17.7	33.81	60.34	36	DP-3, DP-4
6	20.8	40.28	72.43	42	E, F, DP-5
7	31.2	59.61	107.36	42	G, H, DP-6, DP-9
8	7.1	5.69	10.13	30	I
9	11.0	13.30	27.53	36	DP-8, J
10	31.7	69.70	127.53	42	DP-7, K
11	31.7	69.70	127.53	42	DP-10
12	6.5	30.69	54.83	36	L
13	7.4	34.50	61.44	42	DP-12, M
14	12.2	54.35	96.87	42	DP-13, N
15	15.2	65.23	116.52	54	DP-14, O
16	324.5	205.38	410.56	72	DP-32, P
17	328.6	215.39	428.44	72	DP-16, DP-33
18	4.9	18.03	32.10	54	S
19	5.9	35.07	62.66	42	DP-18, T
20	27.1	54.44	109.01	54	DP-19, U, V
21	29.8	102.78	184.26	54	DP-20, OS-4, OS-9
22	3.3	15.37	27.37	30	W
23	6.6	21.40	38.09	42	X, Y
24	10.9	39.40	67.03	42	DP-22, DP-23, DP-25
25	1.0	4.40	7.83	18	
26	12.3	44.50	75.89	48	DP-24, AA
27	3.1	5.03	8.86	18	BB
28	21.2	80.95	136.95	48	DP-26, CC
29	24.5	84.67	144.53	48	DP-28, DP-27
30	27.0	92.17	157.90	60	DP-29, OS-3, OS-5
31	348.4	344.82	588.12	84	DP-17, DP-15, EE
32	323.0	201.70	404.00	72	OS-5
33	4.1	15.22	27.39	30	OS-7, Q



LEGEND

- EXISTING ELECTRIC
- EXISTING FIBER OPTIC
- EXISTING CONTOUR
- EXISTING STORM
- DRAINAGE BASIN BOUNDARY
- PROPOSED CONTOUR
- PROPOSED STORM
- PROPOSED D10R INLET
- PROPOSED FLOW DIRECTION ARROW
- DESIGN POINT
- BASIN DESIGNATION
- "c" COEFFICIENT (100 YR)
- BASIN AREA (ACRES)

SHILOH MESA AT
WOODMEN HEIGHTS
MASTER DEVELOPMENT DRAINAGE PLAN

DRAINAGE PLAN
PROPOSED CONDITIONS

Matrix Design Group, Inc.
Integrated Design Solutions
2435 Research Parkway, Suite 300
Colorado Springs, CO 80920
Phone 719-575-0100
Fax 719-575-0208

DESIGNED BY: BAS SCALE: DATE ISSUED: FEBRUARY, 2009
DRAWN BY: BAS HORIZ: 1" = 100' MDG PROJECT NO: 08.346.005
CHECKED BY: REP VERT: N/A

DR02