

**Vicinity Map**  
NOT TO SCALE

**DEVELOPED DRAINAGE BASIN TABLE**

| BASIN | AREA (Ac.) | Q <sub>s</sub> (CFS) | Q <sub>100</sub> (CFS) |
|-------|------------|----------------------|------------------------|
| V-1   | 25.28      | 14.9                 | 49.7                   |
| V-2   | 4.53       | 4.7                  | 14.7                   |
| V-3   | 15.93      | 17.3                 | 39.4                   |
| D-7   | 0.52       | 1.1                  | 1.6                    |
| W-1   | 14.87      | 12.0                 | 40.5                   |
| W-2   | 18.59      | 20.1                 | 47.0                   |
| W-3   | 2.69       | 2.4                  | 7.5                    |
| W-4   | 0.37       | 0.9                  | 2.0                    |
| W-5   | 0.20       | 0.3                  | 0.8                    |
| U-1   | 7.51       | 5.9                  | 16.6                   |
| U-2   | 1.31       | 1.1                  | 3.1                    |
| U-3   | 1.30       | 1.4                  | 3.9                    |
| U-4A  | 2.11       | 2.5                  | 8.6                    |
| U-4B  | 0.90       | 1.2                  | 4.0                    |
| U-5   | 2.17       | 6.2                  | 13.7                   |
| U-6   | 0.72       | 2.2                  | 4.5                    |
| U-7   | 0.53       | 1.6                  | 3.3                    |
| U-8   | 0.76       | 2.8                  | 5.5                    |
| U-9   | 2.03       | 6.2                  | 13.7                   |
| U-10  | 0.64       | 1.8                  | 4.1                    |
| X-1   | 5.84       | 9.9                  | 21.7                   |

**DEVELOPED DESIGN POINT TABLE**

| BASIN | AREA (Ac.) | Q <sub>s</sub> (CFS) | Q <sub>100</sub> (CFS) |
|-------|------------|----------------------|------------------------|
| DP#1D | 46.26      | 26.5                 | 84.4                   |
| DP#2D | 55.08      | 30.9                 | 98.1                   |
| DP#3D | 36.72      | 32.4                 | 95.6                   |
| DP#4D | 4.88       | 5.7                  | 17.0                   |
| DP#5D | 9.06       | 13.2                 | 34.3                   |
| DP#6D | 109.37     | 73.6                 | 197.2                  |

**LEGEND**

- 6450 EXISTING 1' CONTOUR
- BASIN BOUNDARIES
- BASIN DESIGNATOR
- DESIGN POINT
- PROPOSED 1' CONTOURS
- DIRECTION OF FLOW

**NOTES**

1. THIS IS A CONCEPT GRADING PLAN ONLY - NOT TO BE USED FOR CONSTRUCTION.
2. TOPSOIL TO BE STOCK PILED ON SITE AND REDISTRIBUTED AFTER OVER LOT GRADING IS COMPLETE.

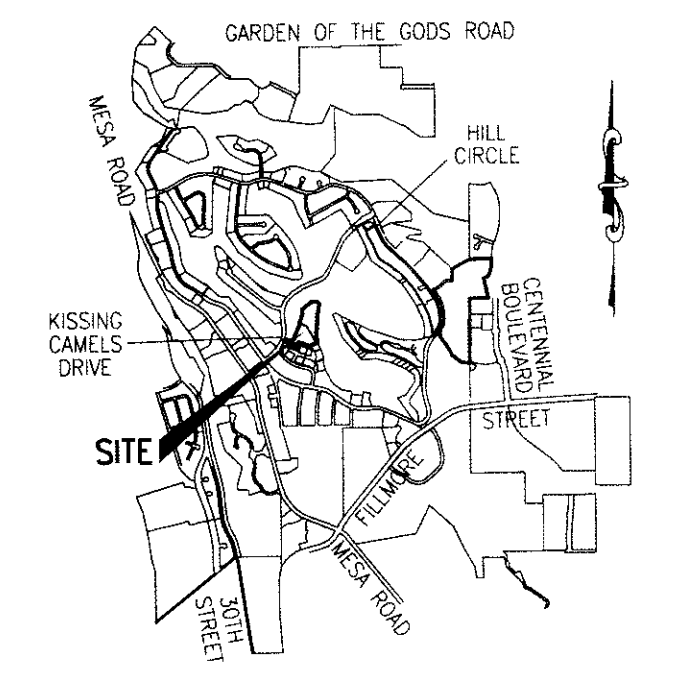
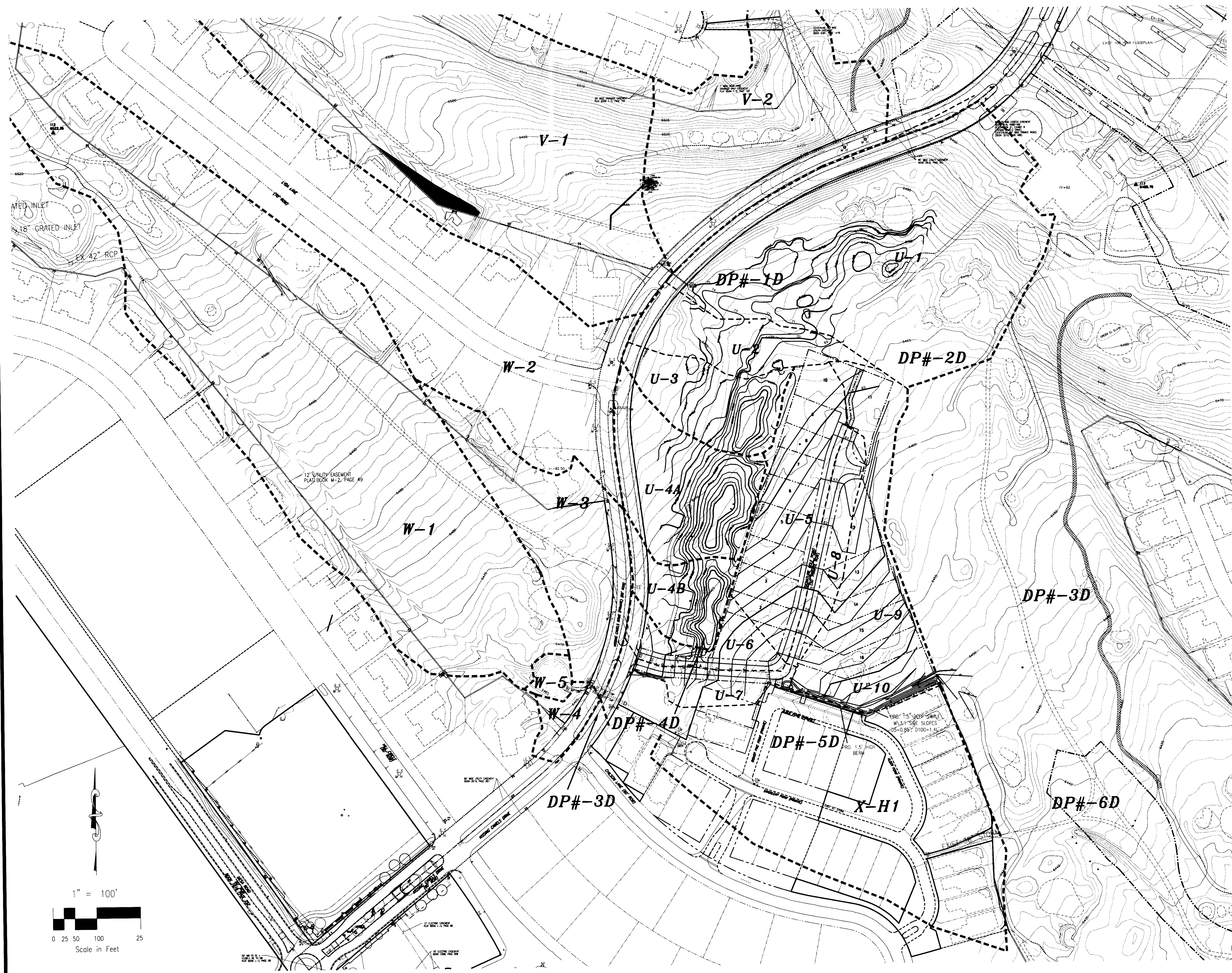
APPROXIMATE FINISHED GRADING,  
SUBJECT TO FINAL DESIGN

EXHIBIT 3  
FILE: 07076-DP.DWG 11/15/11

**ROCKWELL CONSULTING, Inc.** ENGINEERING - SURVEYING  
1955 N. UNION BLVD., SUITE 200  
COLORADO SPRINGS, CO 80909  
(719) 475-2575 • FAX (719) 475-9223

SIGNATURE POINT AT GARDEN OF THE GODS  
TITLE: CLUB FILING NO. 1 - DEVELOPED DRAINAGE  
SCALE: 1"=100' DRAWN BY: KDR 07-076  
DATE: 11/15/11 CHECKED BY: KDR JOB NO.





**Vicinity Map**  
NOT TO SCALE

**DEVELOPED DRAINAGE BASIN TABLE**

| BASIN | AREA (Ac.) | Q <sub>5</sub> (CFS) | Q <sub>100</sub> (CFS) |
|-------|------------|----------------------|------------------------|
| V-1   | 25.28      | 14.9                 | 49.7                   |
| V-2   | 4.53       | 4.1                  | 14.7                   |
| V-3   | 15.93      | 17.3                 | 39.4                   |
| D-7   | 0.52       | 1.1                  | 1.6                    |
| W-1   | 14.87      | 12.0                 | 40.5                   |
| W-2   | 18.59      | 20.1                 | 47.0                   |
| W-3   | 2.69       | 2.4                  | 7.5                    |
| W-4   | 0.37       | 0.9                  | 2.0                    |
| W-5   | 0.20       | 0.3                  | 0.8                    |
| U-1   | 7.51       | 5.9                  | 16.6                   |
| U-2   | 1.31       | 1.1                  | 3.1                    |
| U-3   | 1.30       | 1.4                  | 3.9                    |
| U-4A  | 2.11       | 2.5                  | 6.6                    |
| U-4B  | 0.90       | 1.2                  | 4.0                    |
| U-5   | 2.17       | 6.2                  | 13.7                   |
| U-6   | 0.72       | 2.2                  | 4.5                    |
| U-7   | 0.53       | 1.6                  | 3.3                    |
| U-8   | 0.76       | 2.8                  | 5.5                    |
| U-9   | 2.03       | 6.2                  | 13.7                   |
| U-10  | 0.64       | 1.8                  | 4.1                    |
| X-1   | 5.84       | 9.9                  | 21.7                   |

**DEVELOPED DESIGN POINT TABLE**

| BASIN | AREA (Ac.) | Q <sub>5</sub> (CFS) | Q <sub>100</sub> (CFS) |
|-------|------------|----------------------|------------------------|
| DP#1D | 46.26      | 26.5                 | 84.4                   |
| DP#2D | 55.08      | 30.9                 | 98.1                   |
| DP#3D | 36.72      | 32.4                 | 95.6                   |
| DP#4D | 4.88       | 5.7                  | 17.0                   |
| DP#5D | 9.05       | 13.2                 | 34.3                   |
| DP#6D | 109.37     | 73.6                 | 197.2                  |

**LEGEND**

- EXISTING 1' CONTOUR
- BASIN BOUNDARIES
- BASIN DESIGNATOR
- DESIGN POINT
- PROPOSED 1' CONTOURS
- DIRECTION OF FLOW

**NOTES**

1. THIS IS A CONCEPT GRADING PLAN ONLY - NOT TO BE USED FOR CONSTRUCTION.
2. TOPSOIL TO BE STOCK PILED ON SITE AND REDISTRIBUTED AFTER OVER LOT GRADING IS COMPLETE.

APPROXIMATE FINISHED GRADING,  
SUBJECT TO FINAL DESIGN

EXHIBIT 4  
FILE: 07076-DP.DWG 11/15/11

ENGINEERING - SURVEYING  
1955 N. UNION BLVD., SUITE 200  
COLORADO SPRINGS, CO 80909  
(719) 475-2575 • FAX (719) 475-9233

SIGNATURE POINT AT GARDEN OF THE GODS  
CLUB FILING NO. 1 - DEVELOPED DRAINAGE

SCALE: 1"=100' DRAWN BY: KDR 07-076  
DATE: 11/15/11 CHECKED BY: KDR JOB NO.

