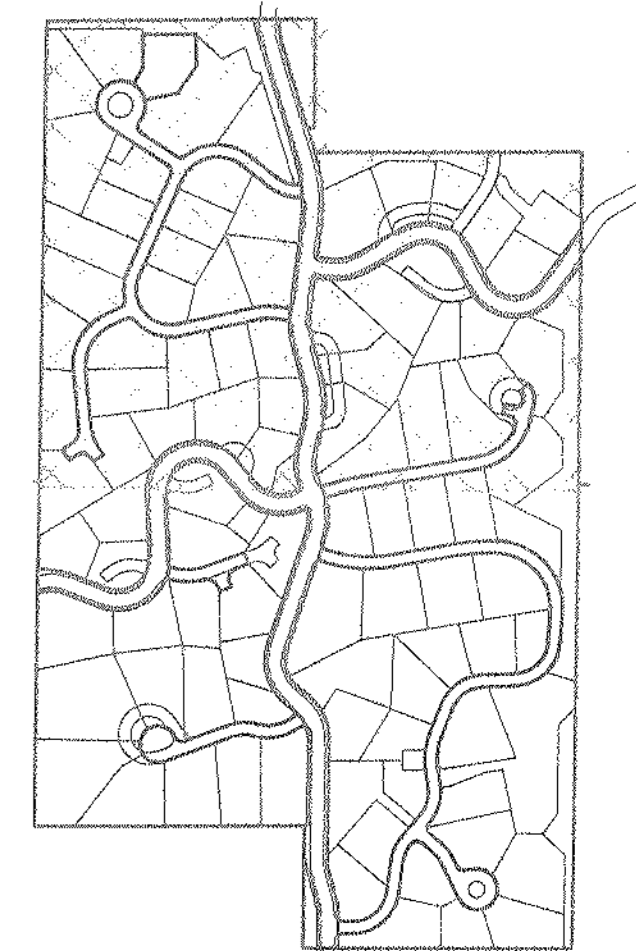


SKYWAY HEIGHTS DRAINAGE PLAN



OVERALL VIEW



LEGEND

- 100 YEAR FLOWS (100)
- MISCELLANEOUS BASIN
- DESIGN POINT
- LIGHT LINE
- INTERIOR (SECONDARY) BASIN LINE
- DROP STRUCTURE/BULLY AT ENTRANCE TO POND
- PIPE OUTLET PROTECTION
- EXISTING CULVERTS
- PRESERVATION EASEMENTS

NOTES:

1. All culverts are to be cleaned out and ends repaired where damaged.
2. See Sheet 6 & 7 for Erosion Control and Drainage Improvements.
3. See Sheet 8 For Details
4. Final construction drawings will provide more detail on:
 - pond grading.
 - locations of timber and rip-rap drop structures.
 - inlet and pipe installations.
 - erosion control.
5. Where necessary, ponds will have sediments cleaned out to provide proper drainage.
6. See Skyway Heights Sub. #2 plot, April 1992, for restrictions for buildings in drainage ways.
 - *All building pads shall be placed at least 18' vertically and 10' horizontally beyond the watersurface for the 100 Yr. flow for all drainage ways.
7. Any crossings of drainage ways by driveways or other construction shall require adequate culverts and erosion protection or flow diversions around the improvements.
8. Any improvements within the 18' vertical or 10' horizontal of the 100 Yr. water surface should be reviewed &/or designed by the engineer. Adequate conveyance of flows & erosion protection is necessary at all drainage ways.

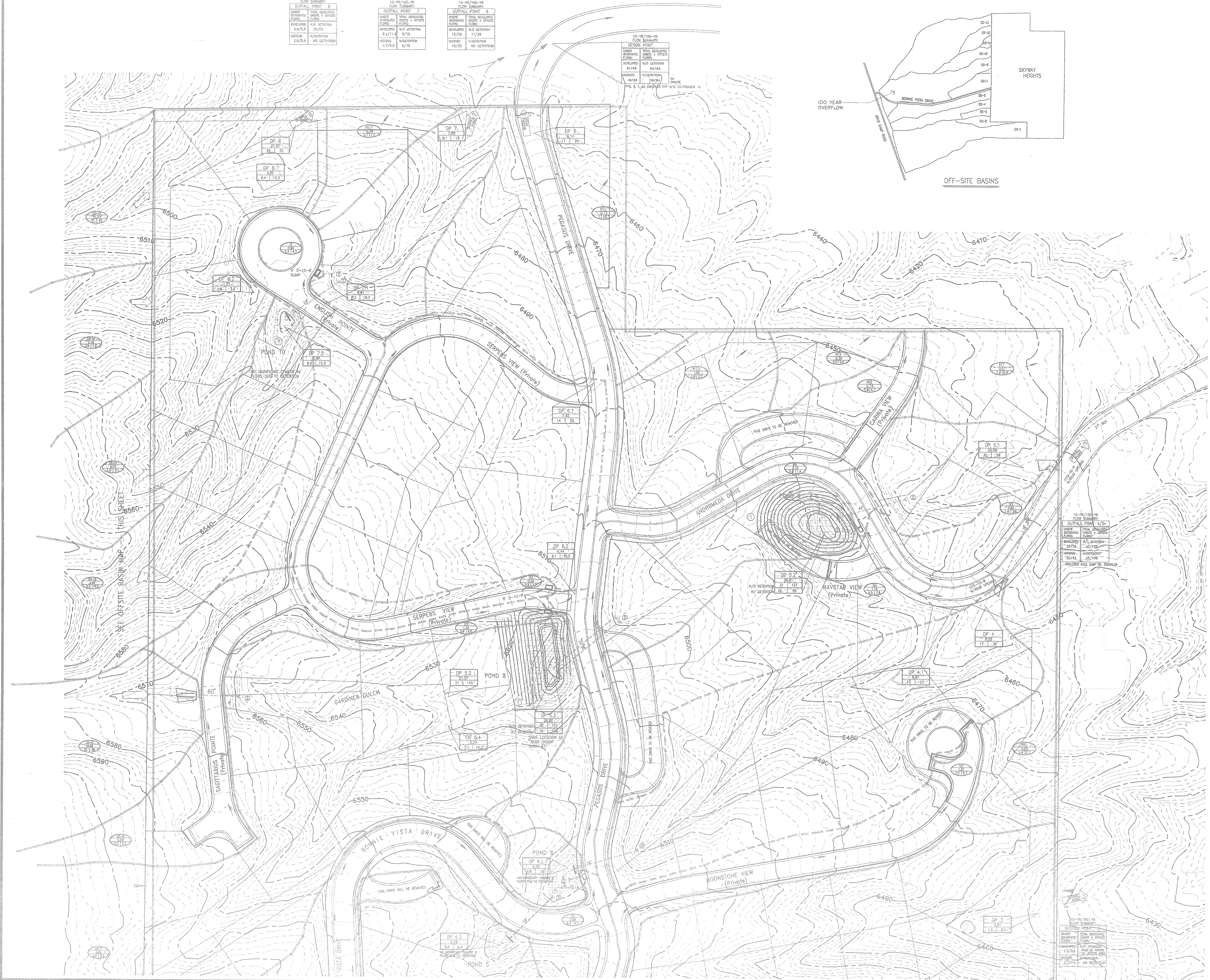
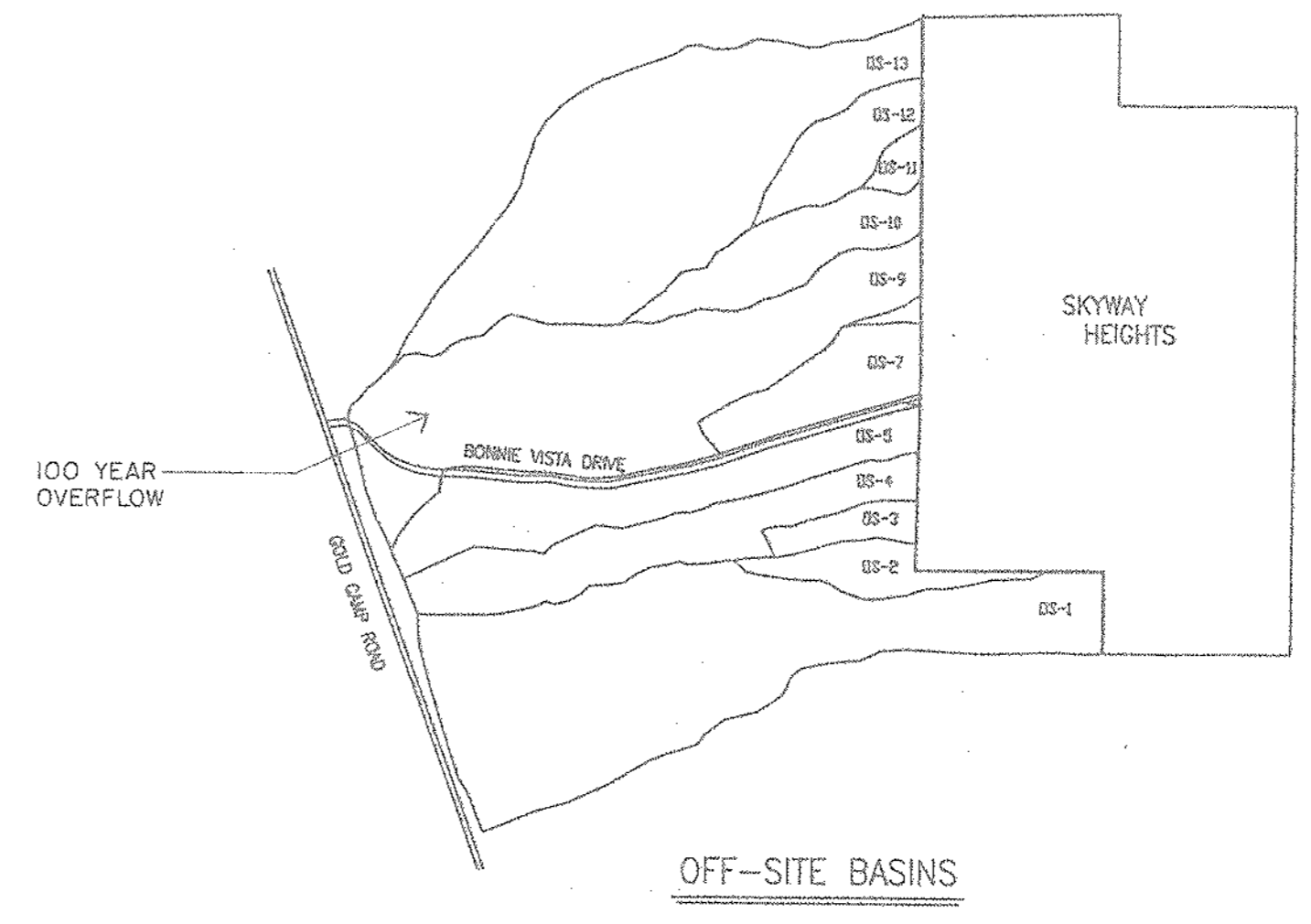
DATE: 4/22/92
 PLD: 4/22/92
 KRELL, INC., INCH. INTER. SKYPODS, LOTS

KUH ENGINEERING, INC.
 ENGINEERS / SURVEYORS / PLANNERS
 200-ONE EIGHTH LANE, COLORADO SPRINGS, COLORADO, 80907, 719-594-4300

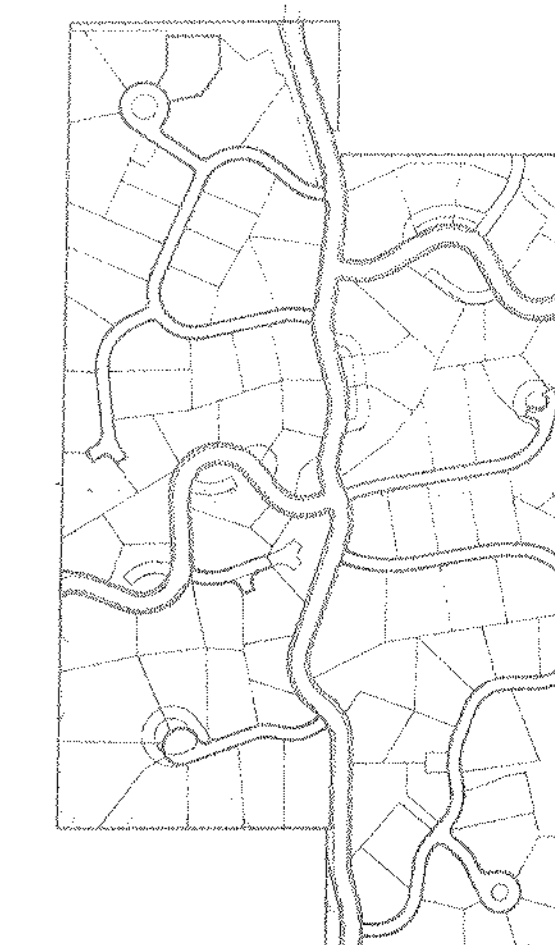
SKYWAY HEIGHTS DRAINAGE PLAN
 SHEET 1 OF 2
 DATE: 4/22/92
 SCALE: 1"=50'
 DRAWN BY: RKN

10-YR/100-YR FLOW SUMMARY	
OUTPUT POINT 8	OUTPUT POINT 7
DESIGN POINT	DESIGN POINT
DESIGNED	DESIGNED
DEVELOPED	DEVELOPED
W/O DETENTION	W/O DETENTION
W/ DETENTION	W/ DETENTION
HISTORIC	HISTORIC

10-YR/100-YR FLOW SUMMARY	
OUTPUT POINT 5	OUTPUT POINT 6
DESIGN POINT	DESIGN POINT
DESIGNED	DESIGNED
DEVELOPED	DEVELOPED
W/O DETENTION	W/O DETENTION
W/ DETENTION	W/ DETENTION
HISTORIC	HISTORIC



SKYWAY HEIGHTS DRAINAGE PLAN



OVERALL VIEW



LEGEND

- 100-YR FLOOD BOUNDARY
- 100-YR FLOOD BOUNDARY
- MISCELLANEOUS BASIN
- DESIGN POINT
- CATCH LINE
- INTERIOR SECONDARY BASIN LINE
- DROP STRUCTURE/OVERFLOW AT ENTRANCE TO POND
- PIPE OUTLET PROTECTION
- EXISTING CULVERT
- PRESERVATION EASEMENTS

NOTES:

1. All culverts are to be cleaned out and ends repaired where damaged.
2. See Sheet 6 & 7 for Erosion Control and Drainage Improvements.
3. See Sheet 8 for Details
4. Final construction drawings will provide more detail on:
 - pond grading.
 - locations of timber and rip-rap drop structures.
 - inlet and pipe installations.
 - erosion control.
5. Where necessary, ponds will have sediments cleaned out to provide proper drainage.
6. See Skyway Heights Sub. #2 plat, April 1992, for restrictions for buildings in drainage ways.

"All building pads shall be placed at least 18" vertically and 10' horizontally beyond the watersurface for the 100 Yr. flow for all drainage ways."
7. Any crossings of drainage ways shall require adequate culverts and erosion protection or flow diversions around the improvements.
8. Any improvements within the 18" vertical or 10' horizontal of the 100 Yr. water surface should be reviewed &/or designed by the engineer. Adequate conveyance of flows & erosion protection is necessary at all drainage ways.

DATE: 4/22/92
 PLOT: 4/22/92
 STREET: SW-BASIN, INTER. SKYWAY HEIGHTS, LOTS

KLH ENGINEERING, INC.
 ENGINEERS / SURVEYORS / PLANNERS
 208-208 SUTTER LANE, COLORADO SPRINGS, COLORADO 80907 719-584-4202

SKYWAY HEIGHTS DRAINAGE PLAN
 TITLE: SKYWAY HEIGHTS DRAINAGE PLAN
 SHEET: 2 OF 2
 DATE: 4/22/92
 SCALE: 1"=50'

