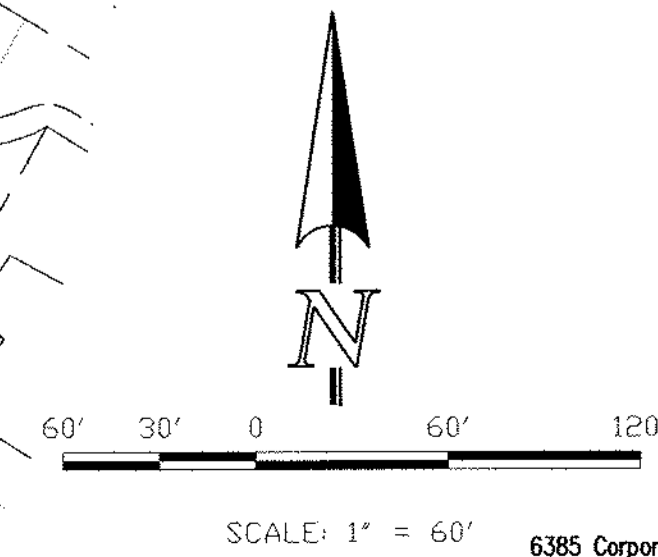
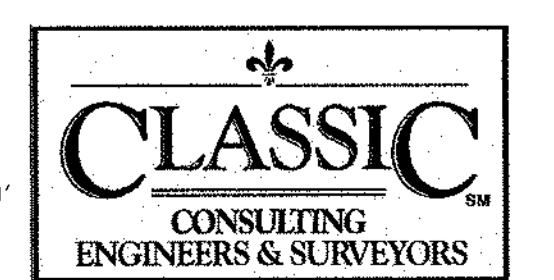


DESIGN POINT	FLOW (CFS)	BASIN SUMMARY:		
		BASIN	Q(5)-CFS	Q(100)-CFS
1	Q5 = 22 CFS Q100 = 42 CFS	A-1	22	42
2	Q5 = 13 CFS Q100 = 25 CFS	A-2	13	25
3	Q5 = 23 CFS Q100 = 44 CFS	A-3	23	44
4	Q5 = 18 CFS Q100 = 35 CFS	B	18	35
		C	1	1
		D	0.4	1
		E	2	4
		F	2	5

LEGEND	
DESCRIPTION	SYMBOL
EXISTING GROUND CONTOUR	6910
PROPOSED FINISHED CONTOUR	6910
BASIN BOUNDARY	---
DESIGN POINT	③
BASIN IDENTIFIER	BB 10.0
AREA IN ACRES	BB 10.0
EXISTING DIRECTION OF FLOW	→
PROPOSED DIRECTION OF FLOW	→
PIPE RUN	④
STORM SEWER	---
EXISTING STORM SEWER	---
CROSS PAN	---

**NOTES:**  
 THIS MAP IS FOR DRAINAGE PURPOSES ONLY.  
 SEE GRADING PLAN FOR APPROPRIATE GRADING INFORMATION.

MASTER DEV. DRAINAGE PLAN  
 SOARING EAGLES COMMERCIAL  
 JOB NO. 2259.00  
 JANUARY 2009  
 SHEET 1 OF 1



X:\225900\DRAWINGS\DEVELOPMENT\225900D.dwg, 2/19/2009 2:06:59 PM, CCES1050C.plt