

DRAINAGE & EROSION CONTROL PLAN

SPRING CREEK SHOPPING CENTER

& SPRING CREEK FILING NO. 5

JULY 1988

EROSION CONTROL NOTES

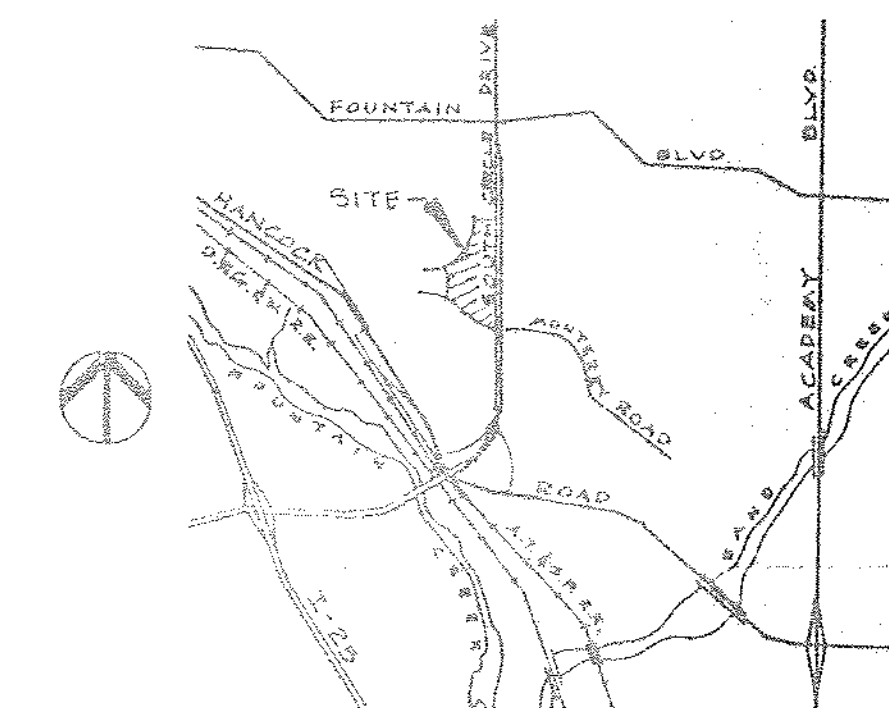
- Scheduling: Phase I construction expected to begin in August, 1988, to be completed by August, 1989.
Phase II construction expected to begin within 2 years.
- Site drains to an existing stockpond located to the Northwest of this site. The Schuck Corporation will adequately maintain this stockpond to provide for sediment control. The overflow area for this stockpond will be protected with straw bales.
- Sediment control facilities shall be inspected once a year.
- Exposed soils shall be seeded with native grasses.
- Removal and disposal of sediment to be accomplished by backhoe and dump truck to a suitable disposal area. This will be accomplished as required by inspections.
- Temporary structural materials will be disposed of as required.

The Owner will comply with the requirements of this Erosion Control Plan.

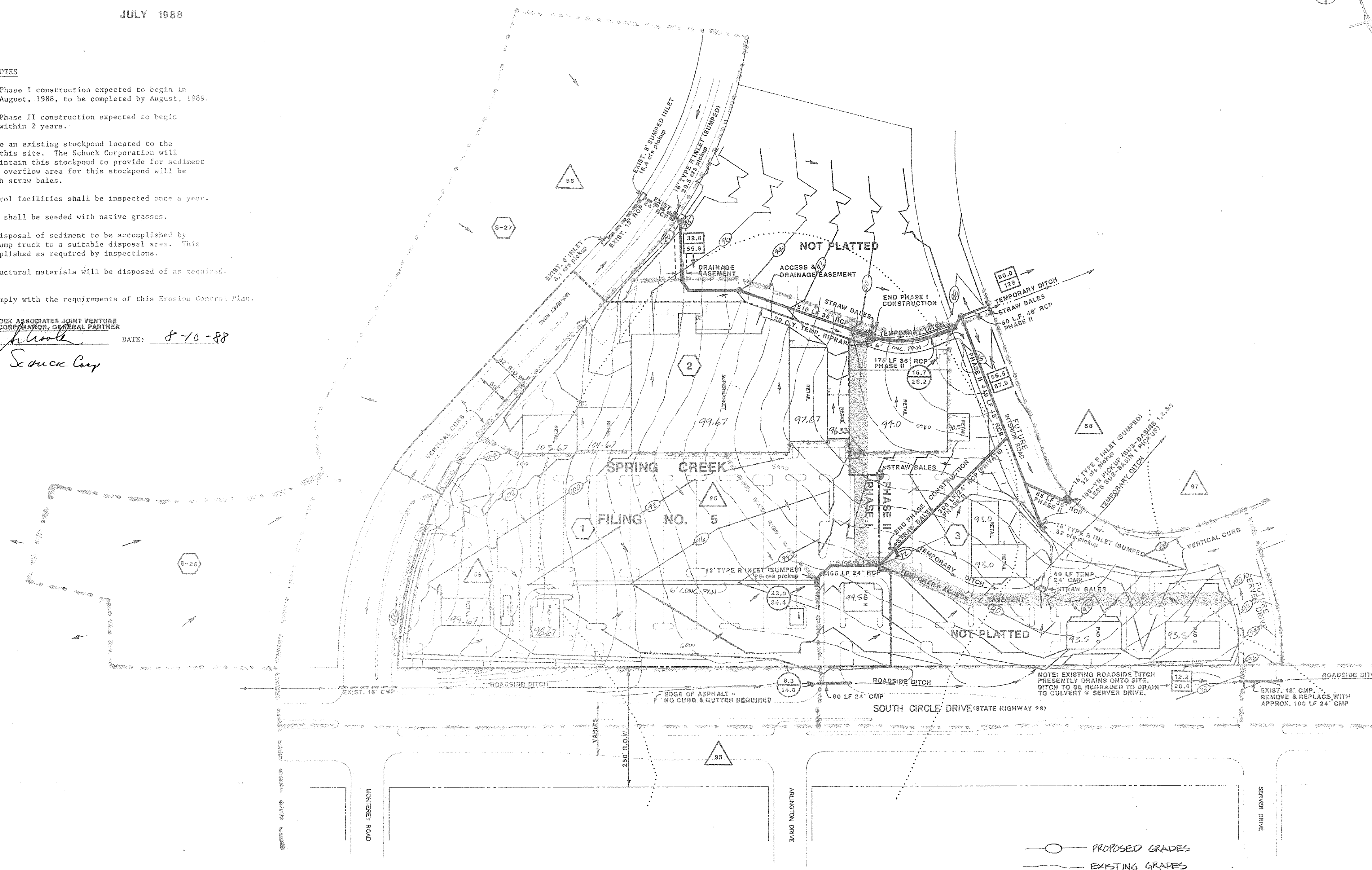
OWNER: WEBB-HANCOCK ASSOCIATES JOINT VENTURE
THE SCHUCK CORPORATION, GENERAL PARTNER

BY: *Wayne A. Schuck* DATE: 8-10-88

C. P. Schuck Corp

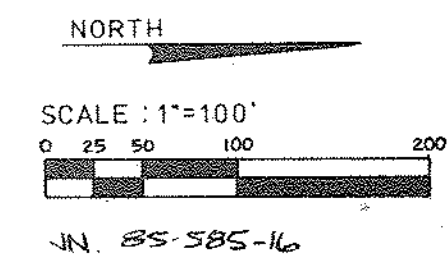
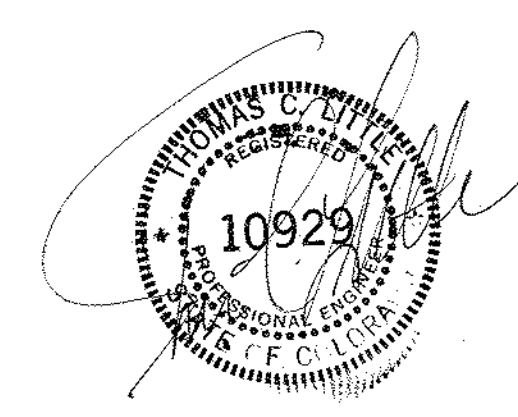


VICINITY MAP
N.T.S.



LEGEND

- 10-YEAR SUB-BASIN FLOW, cfs
- 100-YEAR SUB-BASIN FLOW, cfs
- 10-YEAR ACCUMULATIVE FLOW, cfs
- 100-YEAR ACCUMULATIVE FLOW, cfs
- SUB-BASIN DESIGNATION
- △ S.C.S. SOILS MAP NUMBER
- SOILS LIMIT LINE
- CURB INLET
- MANHOLE
- EXISTING CONTOUR
- - - PROPOSED CONTOUR
- STRAW BALES



"City/County plan review is provided only for general conformance with City/County Design Criteria. The City/County is not responsible for the accuracy and adequacy of the design, dimensions, and/or elevations which shall be confirmed at the job site. The City/County through the approval of this document assumes no responsibility for completeness and/or accuracy of this document."

DRAINAGE PLAN &
GRADING PLAN BY:
KUH ENGINEERING CONSULTANTS INC.
ENGINEERS/SURVEYORS/PLANNERS PUEBLO/COLORADO SPRINGS

SITE PLAN BY:
YERGENSEN, OBERING & WHITTAKER, P.C.

115 SOUTH WEBER, SUITE 200
COLORADO SPRINGS, COLORADO 80903
(719) 475-8133 DENVER (303) 892-9056

MAY 6, 1988