



LEGEND

- MAJOR BASIN BOUNDARY
- SUB-BASIN BOUNDARY
- MAJOR BASIN DESIGNATION
- SUB-BASIN DESIGNATION
- AREA IN ACRES
- DESIGN STORM (5 yr) RUNOFF (cfs)
- MAJOR STORM (100 yr) RUNOFF (cfs)
- EXISTING STORM SEWER WITH INLET AND MANHOLE
- FUTURE STORM SEWER WITH INLET AND MANHOLE
- PROPOSED STORM SEWER WITH INLET AND MANHOLE
- CROSS PAN
- 100-YR ULTIMATE FLOW, EXISTING CHANNEL
- 100-YR EXISTING FLOW, FEMA
- EXISTING ELEVATION
- 001 DESIGN POINT
- CULVERT NUMBER
- PROPOSED LAKE (PRIVATE)
- BENCHMARK:
PIN AND CAP L.S. NO. 3854
LOCATED AT SECTION CORNER 19, 20, 29 AND 30
T.13 S., R.65 W.
ELEV. 6604.88 U.S.G.S. DATUM

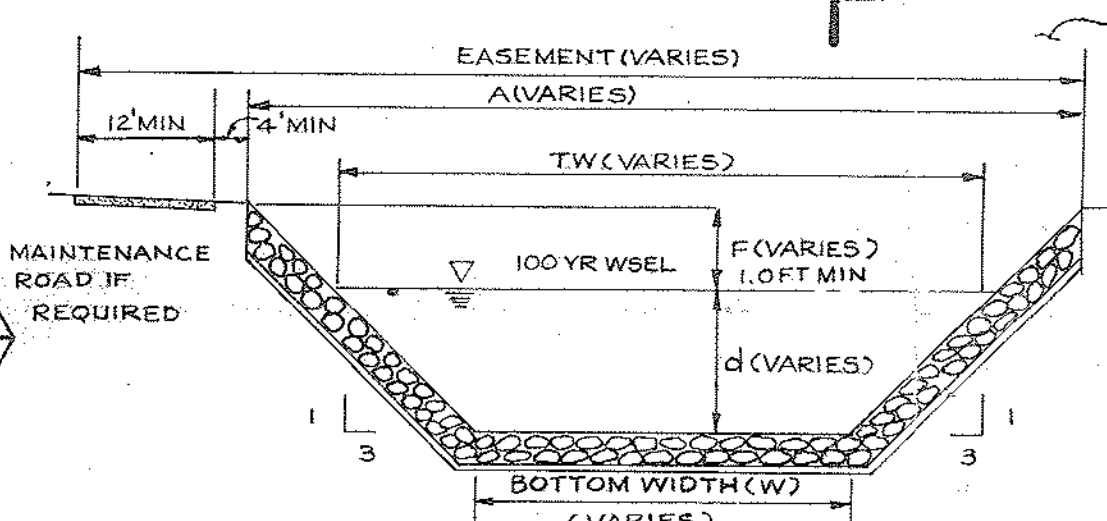
NOTE:

1. ALL OFFSITE BASINS ARE SHOWN ON SHT. 1 OF 2

| CULVERT NO. | Q (cfs) | SELECTION |
|-------------|---------|---------------------------|
| 1 | 1875 | Triple 8' x 10' RCB |
| 2 | 1175 | Double 6' x 10' RCB |
| 3 | 900 | 8' x 10' RCB |
| 4 | 1565 | Double 8' x 10' RCB |
| 5 | 1260 | Double 8' x 10' RCB |
| 6 | 935 | 8' x 10' RCB |
| 7 | 295 | 72" RCP |
| 8 | 209 | 72" RCP |
| 9 | 175 | 72" RCP |
| 10 | 269 | 48" x 108" Elliptical RCP |
| 11 | 267 | 5' x 8' RCB |
| 12 | 188 | 72" RCP |
| 13 | 2322 | Double 8' x 10' RCB |
| 14 | 1930 | Triple 8' x 10' RCB |

FLUWS (BELOW LARIAT)

| BASIN NO. | 5-YR. STORM (cfs) | 100-YR. STORM (cfs) |
|-----------|-------------------|---------------------|
| A1 | 23.6 | 44.0 |
| A2 | 19.9 | 35.5 |
| A3 | 14.3 | 25.1 |
| A4 | 25.8 | 45.9 |
| A5 | 20.5 | 36.9 |
| A6 | 25.0 | 45.4 |
| A7 | 11.7 | 20.0 |
| A8 | 14.7 | 26.5 |
| A9 | 16.7 | 29.3 |
| A10 | 15.0 | 26.5 |
| A11 | 21.4 | 39.7 |
| A12 | 20.6 | 37.0 |
| A13 | 23.5 | 43.8 |
| A14 | 20.1 | 36.0 |
| A15 | 12.5 | 23.0 |
| A16 | 12.1 | 22.4 |
| A17 | 0.9 | 1.6 |
| A18 | 18.7 | 35.2 |
| B1 | 22.5 | 42.0 |
| B2 | 18.0 | 32.4 |
| B3 | 18.8 | 34.0 |
| B4 | 22.0 | 40.0 |
| B5 | 20.2 | 37.0 |
| B6 | 19.2 | 35.0 |
| B7 | 23.7 | 43.0 |
| B8 | 15.9 | 28.5 |
| B9 | 7.3 | 13.4 |
| B10 | 6.1 | 11.4 |
| B11 | 22.3 | 41.0 |
| B12 | 15.4 | 27.5 |
| B13 | 14.4 | 26.0 |
| B14 | 15.4 | 27.5 |
| B15 | 14.4 | 26.0 |
| B16 | 12.5 | 23.0 |
| B17 | 24.6 | 45.0 |
| B18 | 15.9 | 28.5 |
| B19 | 12.1 | 22.4 |
| B20 | 27.6 | 52.5 |
| B21 | 17.8 | 32.0 |
| B22 | 26.0 | 50.0 |
| B23 | 20.4 | 37.0 |
| B24 | 18.7 | 34.0 |
| B25 | 20.4 | 37.0 |
| B26 | 12.5 | 23.0 |
| B27 | 24.2 | 43.0 |
| B28 | 8.8 | 16.0 |
| B29 | 6.6 | 13.0 |
| C1 | 20.9 | 38.0 |
| C2A | 17.2 | 31.0 |
| C2B | 18.4 | 33.0 |
| C3 | 22.3 | 41.0 |
| C4 | 13.3 | 24.0 |
| C5 | 61.9 | 112.0 |
| C6 | 21.2 | 39.0 |
| C7A | 22.3 | 41.0 |
| C7B | 16.8 | 30.0 |
| C7C | 17.8 | 32.0 |
| C7D | 19.5 | 35.0 |
| C7E | 11.6 | 20.4 |
| C7F | 62.7 | 118.6 |
| C8 | 4.2 | 7.8 |
| C9 | 12.1 | 22.4 |
| D0 | 7.2 | 13.4 |
| D1 | 10.6 | 19.0 |
| D2 | 8.0 | 14.8 |
| D3 | 7.7 | 14.2 |
| D4 | 12.9 | 23.6 |
| D5A | 10.1 | 18.6 |
| D5B | 4.7 | 8.4 |
| D6 | 9.6 | 17.6 |
| D7 | 15.7 | 29.0 |
| D8 | 14.8 | 27.2 |
| D9 | 13.1 | 24.2 |
| E1 | 19.2 | 35.0 |
| E2 | 9.7 | 17.6 |
| E3 | 12.9 | 23.6 |
| E4 | 8.2 | 15.4 |
| E5 | 1.8 | 3.4 |
| E6 | 3.9 | 7.2 |
| E7 | 5.80 | 10.9 |
| E8 | 4.5 | 8.4 |
| E9 | 2.5 | 4.6 |
| E10 | 4.9 | 9.2 |
| E11 | 8.7 | 16.0 |
| E12 | 18.3 | 33.0 |
| E13 | 10.2 | 18.6 |
| E14 | 17.4 | 32.0 |
| E15 | 4.5 | 8.4 |
| E16 | 35.0 | 64.0 |
| E17 | 64.4 | 123.1 |
| F1 | 8.6 | 15.7 |
| F2 | 9.5 | 17.6 |
| F3 | 30.8 | 57.0 |
| F4 | 24.7 | 45.0 |
| F5 | 22.9 | 42.0 |
| F6 | 2.6 | 4.8 |
| F7 | 5.7 | 10.6 |
| F8 | 7.8 | 14.8 |
| F9 | 6.0 | 11.4 |
| G1 | 5.6 | 10.6 |
| G2 | 8.1 | 15.4 |
| H1 | 14.4 | 26.0 |
| H2 | 24.7 | 45.0 |
| H3 | 1.1 | 2.0 |
| H4 | 1.8 | 3.4 |
| H5 | 5.3 | 10.0 |
| I1 | 16.9 | 31.0 |
| J1 | 19.1 | 35.0 |
| J2 | 72.7 | 138.2 |
| J3 | 12.2 | 22.4 |
| J4 | 12.7 | 23.6 |
| J5 | 7.1 | 13.4 |
| J6 | 31.0 | 57.0 |
| J7 | 7.1 | 13.4 |
| J8 | 11.9 | 22.4 |



ROUTED RIP RAP CHANNELS
(OTHER THAN SAND CREEK)

| SECTION | CHANNEL VARIABLE | MAX (FT) | MIN (FT) |
|---------|------------------|----------|----------|
| A-A | EASEMENT | 84.7 | 73.7 |
| | A | 68.7 | 57.7 |
| | TW | 56.9 | 48.1 |
| | F | 2.0 | 1.6 |
| | d | 7.8 | 6.4 |
| B-B | W | 10.0 | 10.0 |
| | EASEMENT | 43.6 | 40.0 |
| | A | 27.6 | 24.0 |
| | TW | 21.8 | 17.9 |
| C | F | 1.0 | 1.0 |
| | d | 3.1 | 2.5 |
| | W | 3.0 | 3.0 |
| | W | 3.0 | 3.0 |

PREPARED FOR:
AMHST, INC.
5455 NORTH UNION BLVD.
COLORADO SPRINGS, COLORADO 80936-5069
(303) 598-5151

TOPO PROVIDED BY:
ANALYTICAL SURVEYS, INC.
P.O. BOX 7361
4167 SINTON ROAD
COLORADO SPRINGS, COLORADO 80933
(303) 593-0093

ABOVE LARIAT, THE CENTERLINE FOR THE CHANNEL IMPROVEMENTS WILL BASICALLY FOLLOW THE EXISTING CHANNEL CENTERLINE AND WILL CONFORM TO THE CITY OF COLORADO SPRINGS CRITERIA FOR CHANNEL DESIGN.

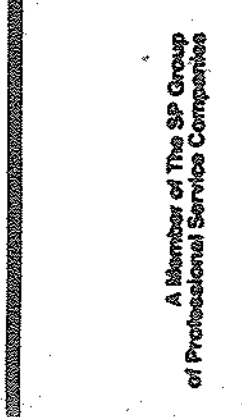
TEMPORARY DETENTION POND (SEE PG. 6 OF TEXT)
LOCATION TO BE DETERMINED BY SEQUENCE OF PLATTING
LIMITS OF PROPOSED CHANNEL IMPROVEMENTS

NOTE:
EXACT LOCATIONS AND SIZES OF INLETS WILL BE DETERMINED DURING STETSON HILLS FILING NO. 1 FINAL DRAINAGE STUDY.

DEV. (Q₁₀₀ = 19.3 cfs)
(APPROX. 7 cfs/Ac.)

REVISIONS

APPROVED BY



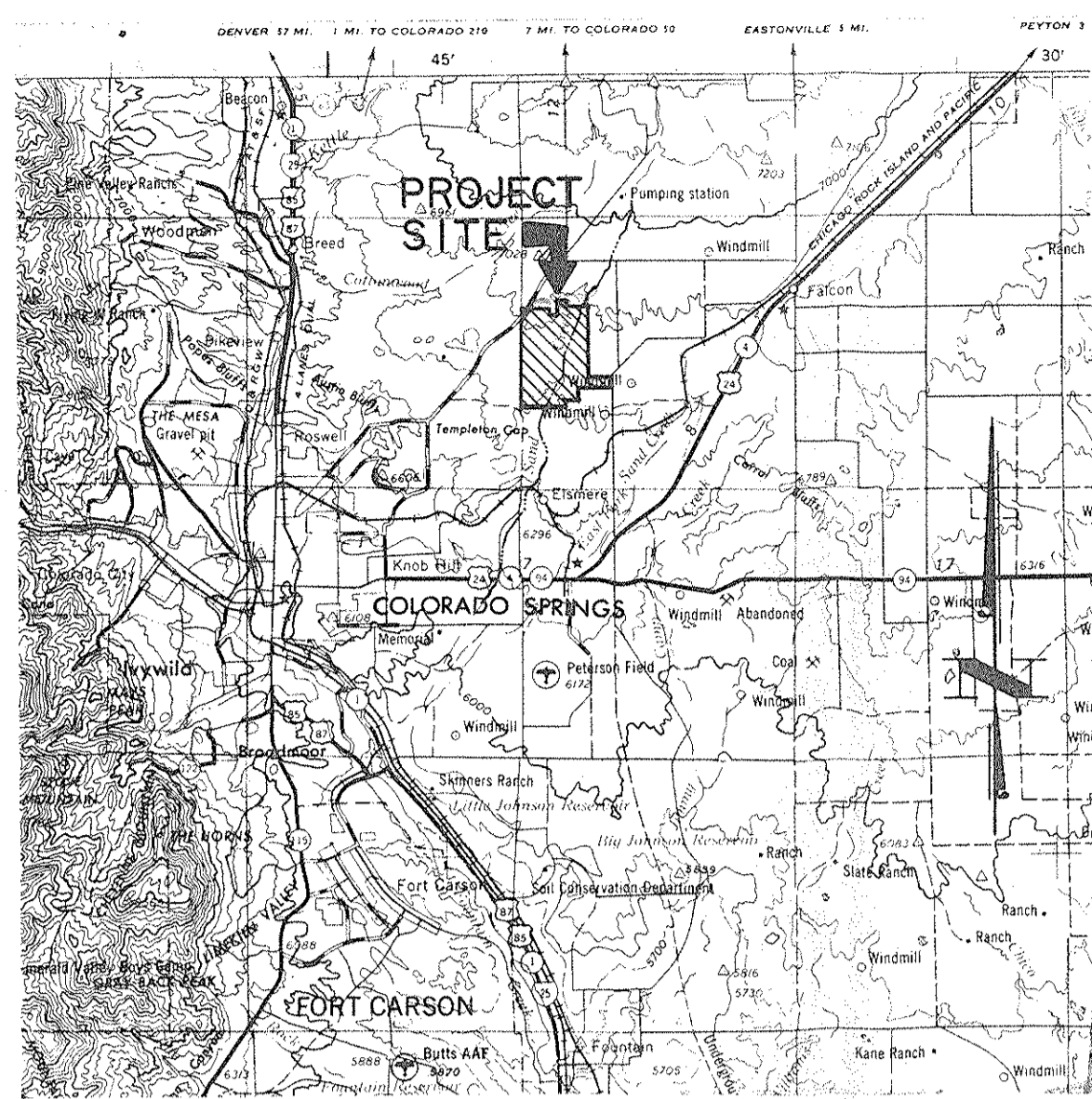
Greiner Engineering
Greiner Engineering Sciences, Inc.

Design: CMB/JB
Drawn: W.J.H.
Check: E.C.

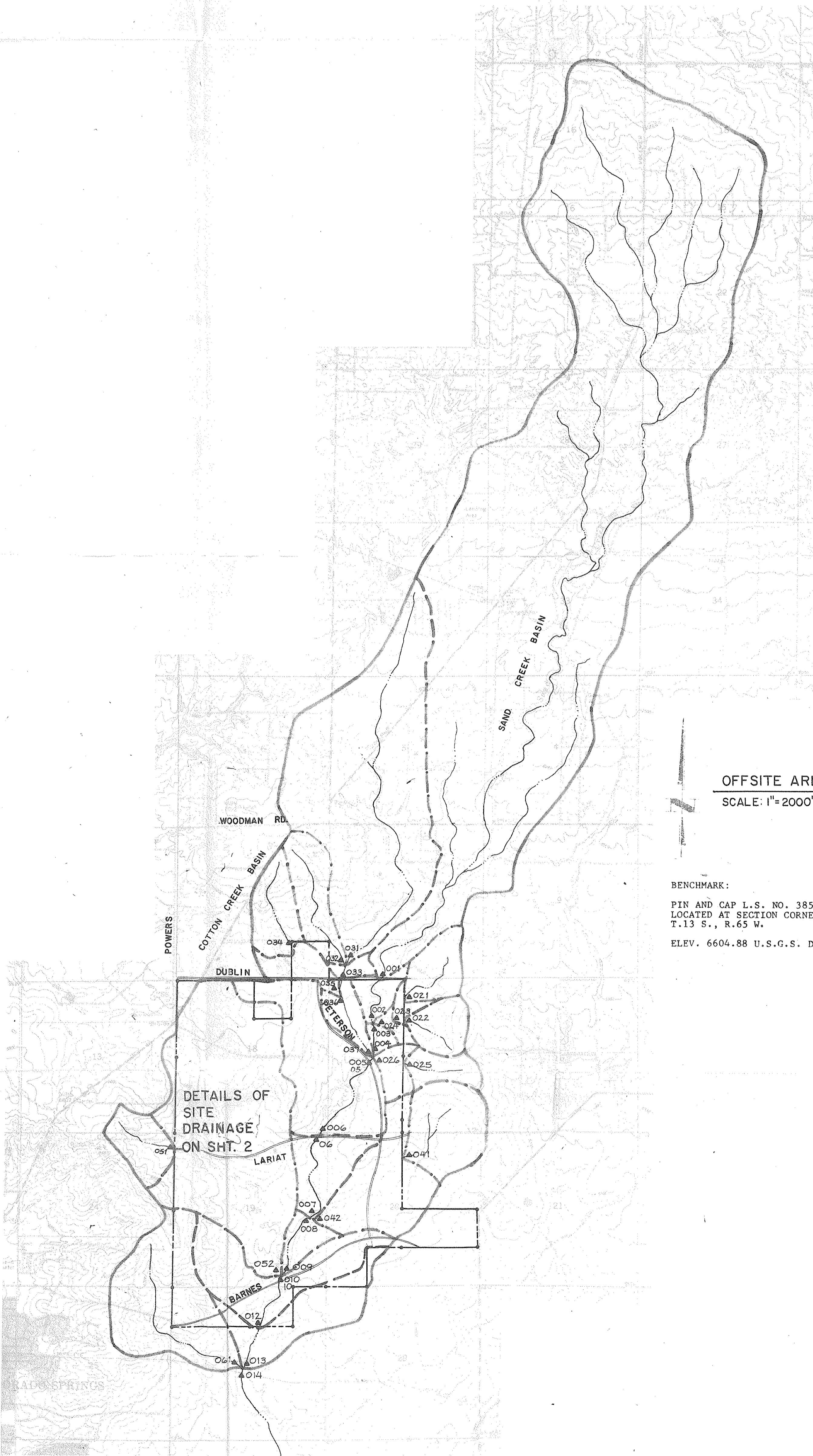
Scale: 1" = 400'

STETSON HILLS
MASTER
DRAINAGE STUDY

DATE: APRIL 1985
JOB No.: 5161701
SHEET OF 2



VICINITY MAP
SCALE: 1" = 250,000'



OFFSITE AREA
SCALE: 1" = 2000'

BENCHMARK:
PIN AND CAP L.S. NO. 3854
LOCATED AT SECTION CORNER 19, 20, 29 AND 30
T.13 S., R.65 W.
ELEV. 6604.88 U.S.G.S. DATUM

TR-20 100YR 24HR FLOWS

| DESIGN POINT | Q 100 |
|--------------|-------|
| 001 | 3440 |
| 002 | 3450 |
| 003 | 3480 |
| 004 | 3480 |
| 005 | 3945 |
| 006 | 4020 |
| 007 | 4060 |
| 008 | 5100 |
| 009 | 5190 |
| 010 | 7080 |
| 012 | 7660 |
| 013 | 8050 |
| 014 | 9230 |
| 021 | 460 |
| 022 | 920 |
| 023 | 1030 |
| 024 | 1130 |
| 025 | 370 |
| 026 | 570 |
| 031 | 1740 |
| 032 | 1920 |
| 033 | 1930 |
| 034 | 420 |
| 035 | 550 |
| 036 | 2270 |
| 037 | 2320 |
| 041 | 930 |
| 042 | 1460 |
| 051 | 720 |
| 052 | 1900 |
| 061 | 1870 |

▲ C10 DESIGN POINT
FOR TR-20 ANALYSIS

PREPARED FOR:
AMWEST DEVELOPMENT CORP.
P.O. BOX 25069
4544 NORTH UNION BOULEVARD
COLORADO SPRINGS, COLORADO 80933
(303) 597-7188

TOPO PROVIDED BY:
ANALYTICAL SURVEYS, INC.
P.O. BOX 7361
4167 SINTON ROAD
COLORADO SPRINGS, COLORADO 80933
(303) 593-0093

REVISIONS

OVERALL BASIN MAP

APPROVED BY
E. G. [Signature]

A Member of The [Group]
of Professional Service Companies

Greiner Engineering
Greiner Engineering Sciences, Inc.

Design: JB/CMB

Drawn: WFM

Check: EEB

Scale: AS SHOWN

STETSON HILLS
MASTER
DRAINAGE STUDY

DATE: AUGUST 1984

JOB No: 5161701

SHEET OF

1 2

SEP. 0 9 85
100 0 0 000