

CITY OF COLORADO SPRINGS

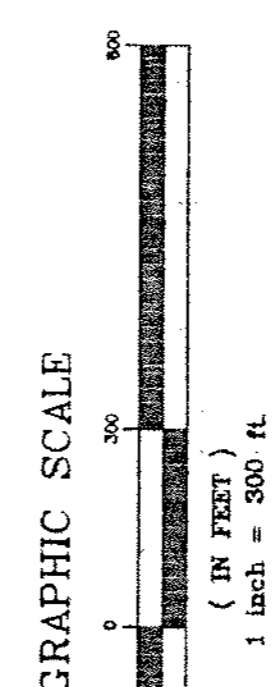
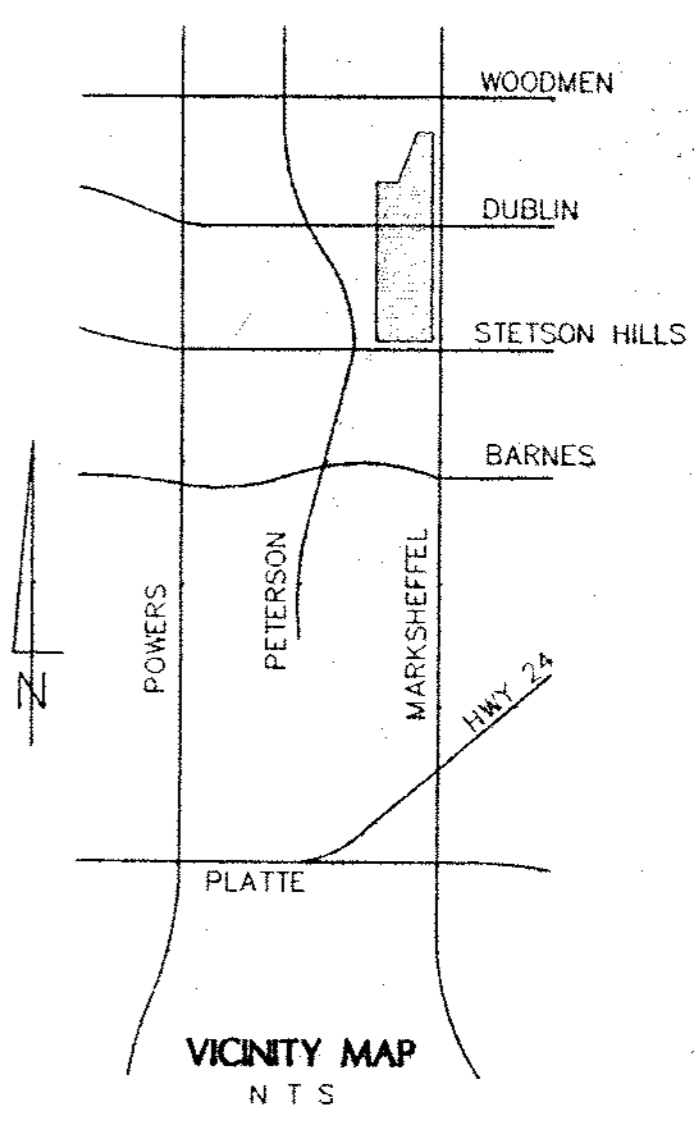
EL PASO COUNTY

CITY LIMITS

Legal Description

LEGEND

- MAIN BASIN LINE
- SUB BASIN LINE
- ZONE USE LINE
- to PATH
- PROPOSED DROP STRUCTURE (PER SAND CREEK D.B.P.S.)
- PROPOSED 10 YEAR RIP-RAP
- BANK PROTECTION (PER SAND CREEK D.B.P.S.)
- FEMA FLOOD PLAIN

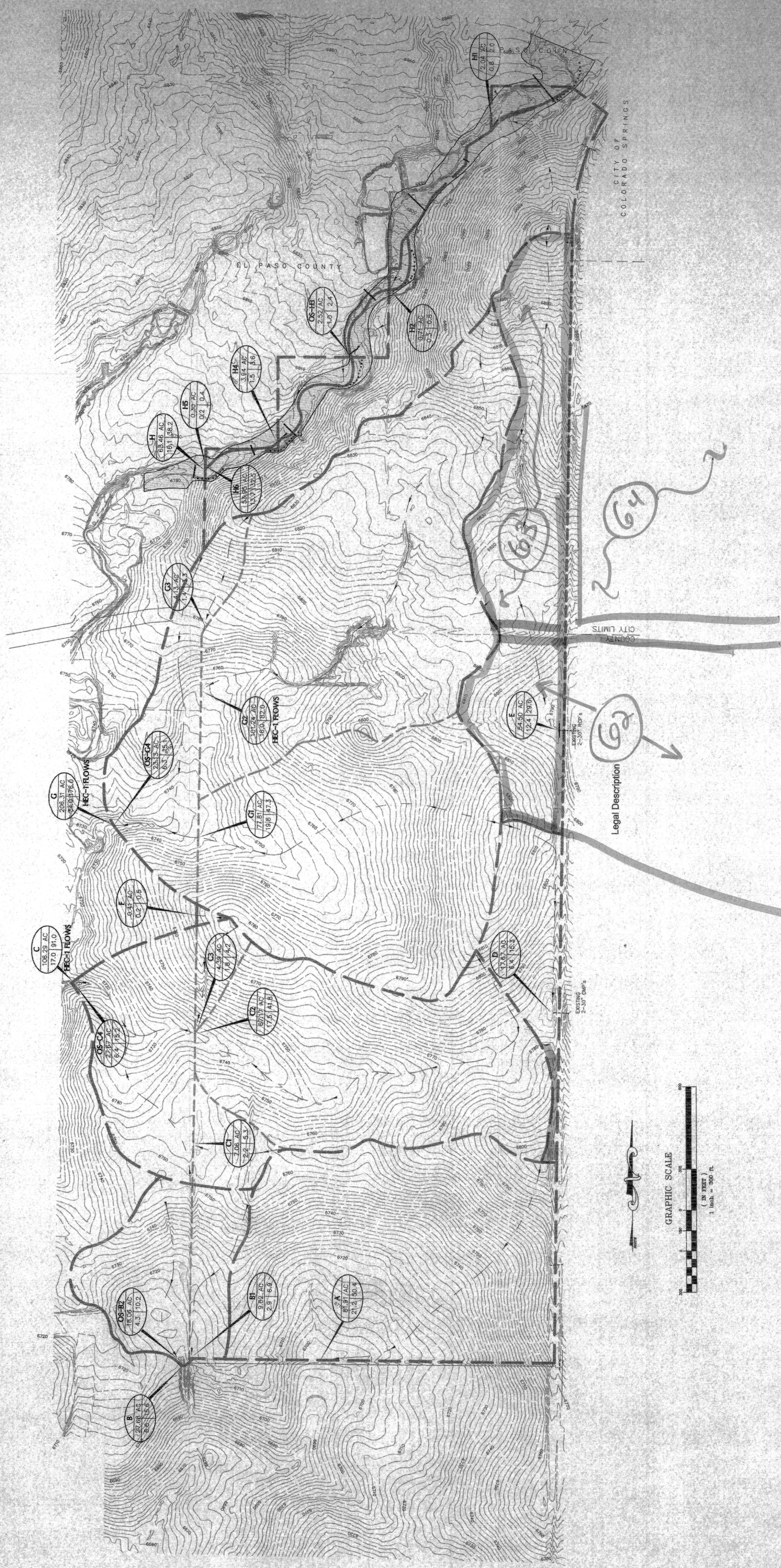


DESIGN POINT AREA	DP - 1	14.4	5 YR FLOW
	5.6	26.9	100 YR FLOW

OS-3B BASIN AREA	3.4 Ac.
CUMULATIVE AREA	10.4 Ac.
5 YR FLOW	22 cfs
100 YR FLOW	102 cfs

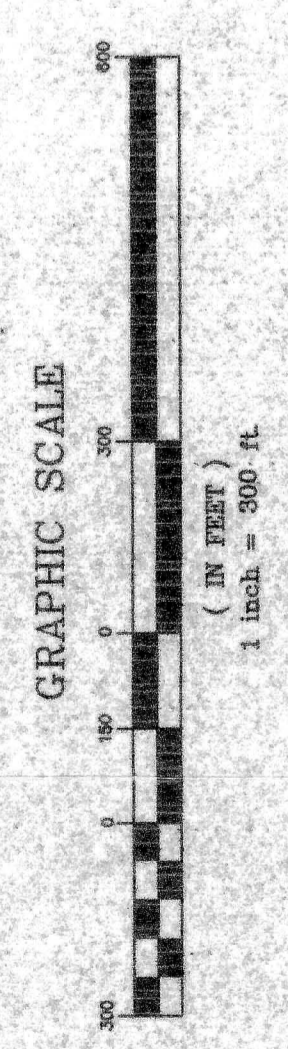
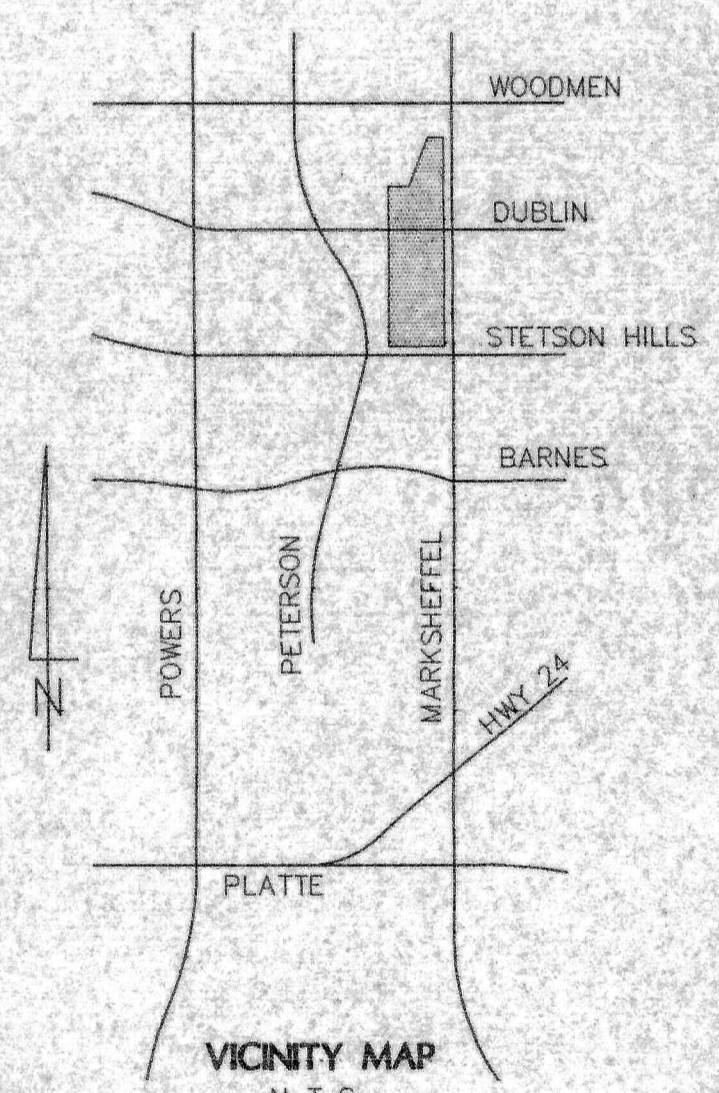
CONTOUR INTERVAL = 2 FT

SHEET TITLE		EXISTING CONDITIONS MDDP	
PROJECT		STETSON RIDGE COLORADO SPRINGS, CO	
DRAWING NO.	MDDP	PREPARED BY	<i>Leigh Whitehead & Associates, Inc.</i> Engineers, Surveyors & Planners
SCALE	1"=300'	2720 East Yampa Street Suite 1 Colorado Springs, CO 80909	
DATE	10-25-00	Phone	(719) 636-5179
DRAWN BY	LJ	Fax	(719) 636-5199
CHECKED BY	LAB		
PROJECT NO.	98079	SHEET 1 OF 2	



- LEGEND**
- MAIN BASIN LINE
 - SUB BASIN LINE
 - ZONE USE LINE
 - 1:6 PATH
 - PROPOSED DROP STRUCTURE (PER SAND CREEK D.B.P.S.)
 - PROPOSED 10 YEAR RIP-RAP
 - BANK PROTECTION (PER SAND CREEK D.B.P.S.)
 - FEMA FLOOD PLAIN

Legal Description



DESIGN POINT	DP - 1	14.4	5 YR FLOW
AREA	5.6	28.9	100 YR FLOW

OS-38 BASIN	3.4 AC.	AREA
OS-38 AREA	10.4 AC. Cum.	CUMULATIVE AREA
5 YR FLOW	22 cfs	
100 YR FLOW	102 cfs	

CONTOUR INTERVAL = 2 FT

SHEET TITLE		EXISTING CONDITIONS MDDP	
PROJECT		STETSON RIDGE COLORADO SPRINGS, CO	
DRAWING NO.	MDDP	PREPARED BY	<i>Leigh Whitehead & Associates, Inc.</i> Engineers, Surveyors & Planners
SCALE	1" = 300'	2720 East Yampa Street Suite 1 Colorado Springs, CO 80909 Phone (719) 636-5179 Fax (719) 636-5169	
DATE	10-25-00	SHEET 1 OF 2	
DRAWN BY	LJ		
CHECKED BY	LAB		
PROJECT NO.	98079		