

STONEWATER AT NORTHGATE FILING NO. 1, 2 & 3

CITY OF COLORADO SPRINGS, COUNTY OF EL PASO, STATE OF COLORADO

HISTORICAL DRAINAGE MAP

LEGEND

BASIN BOUNDARY ———

FLOW DIRECTION →

BASIN IDENTIFIER →

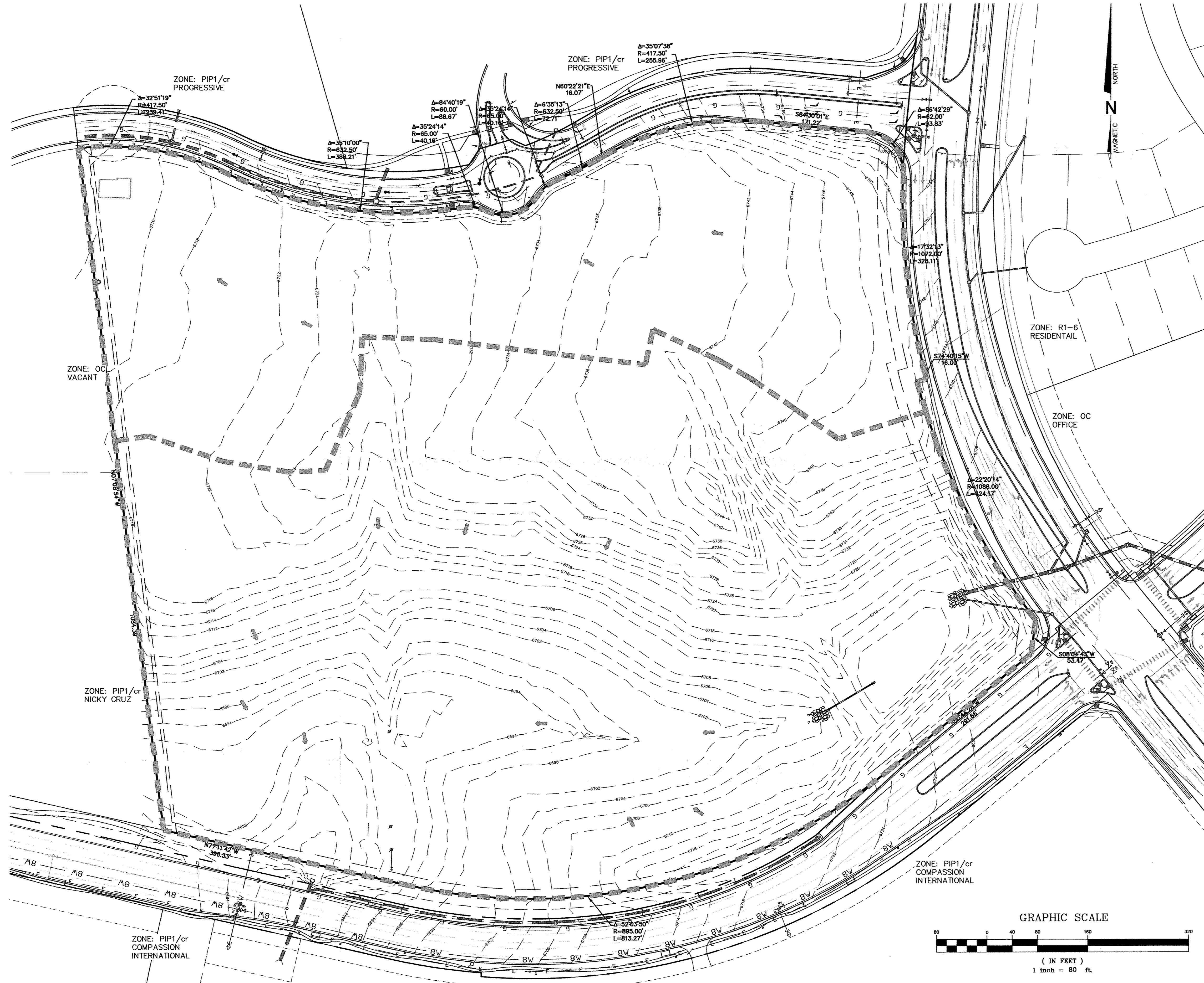
AREA IN ACRES →

DESIGN POINT



ECE
EXECUTIVE CONSULTING ENGINEERS
1295 Kelly Johnson BLVD.
Suite 200
Colorado Springs, Colorado
80920
(719)481-9707

THESE DRAWINGS ARE PREPARED BY EXECUTIVE CONSULTING ENGINEERS FOR A DEFINED PROJECT AND SHALL NOT BE REPRODUCED IN WHOLE OR IN PART FOR ANY OTHER PROJECTS. REUSE OR MODIFICATION OF THESE DRAWINGS WITHOUT THE PRIOR WRITTEN CONSENT OF EXECUTIVE CONSULTING ENGINEERS SHALL BE AT THE SOLE RISK OF THE UNAUTHORIZED USER. THE UNAUTHORIZED USER SHALL INDEMNIFY AND HOLD EXECUTIVE CONSULTING ENGINEERS HARMLESS FROM ANY LIABILITIES, DAMAGES AND LOSSES.



| NO. | REVISION DESCRIPTION | BY | DATE |
|-----|----------------------|----|------|
| | | | |
| | | | |
| | | | |
| | | | |
| | | | |

PREPARED UNDER MY DIRECT SUPERVISION FOR AND ON BEHALF OF EXECUTIVE CONSULTING ENGINEERS, INC.

BOB H. YOO, COLORADO P.E. #48793

DATE _____

PROJECT NAME
STONEWATER AT NORTHGATE FIL. NO. 1, 2 & 3
COLORADO SPRINGS, COLORADO
FINAL DRAINAGE STUDY

DRAWING TITLE
HISTORICAL DRAINAGE MAP

| | |
|-------------|-------------|
| H-Scale | 1" = 80' |
| V-Scale | N/A |
| Date | 31 MAY 2007 |
| Project No. | 1010 |
| Drawn by | BHY |
| Designed by | BHY |
| Checked by | BHY |
| SHEET: | 1 OF 2 |

COMPASSION INTERNATIONAL'S
NORTHGATE CAMPUS FILING NO. 1
REC NO. 99162816