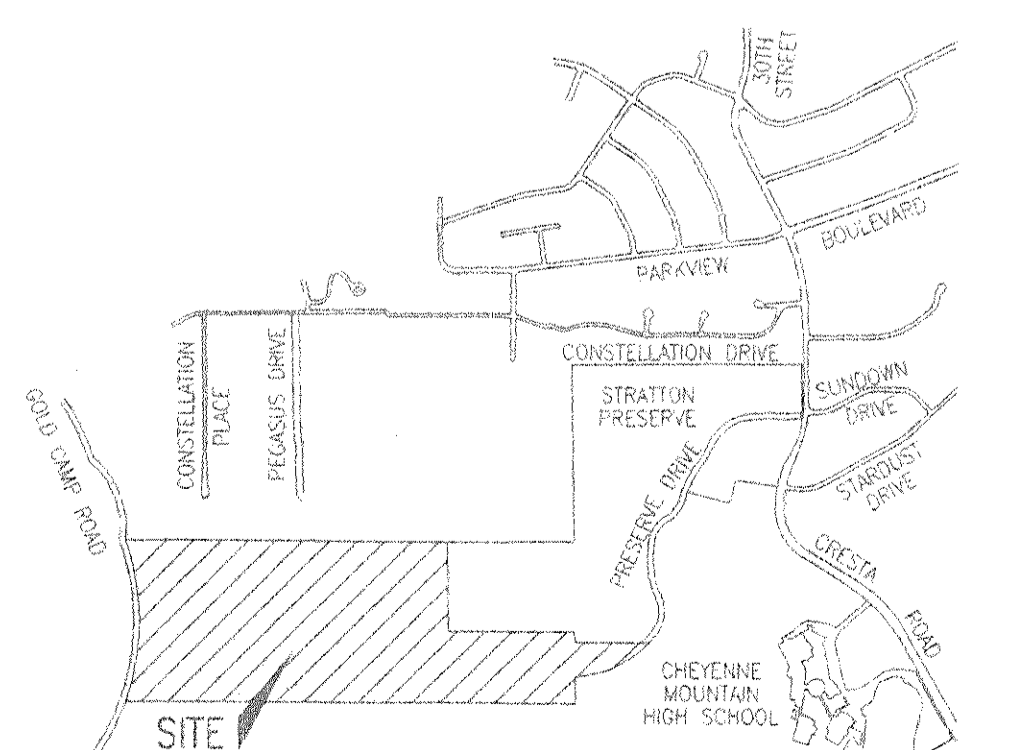
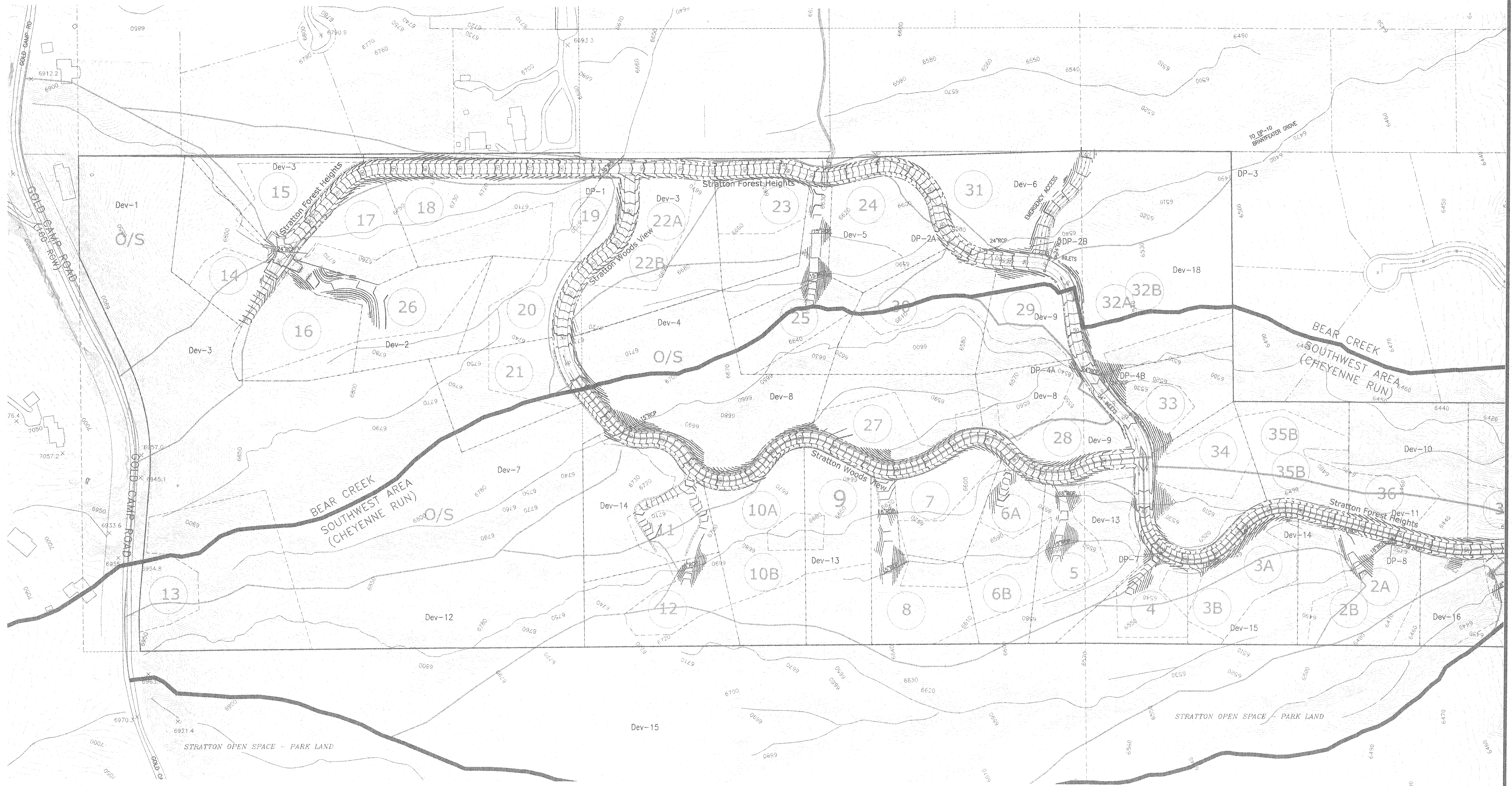


# STRATTON FOREST

## DEVELOPED DRAINAGE PLAN



Vicinity Map

NOT TO SCALE

| BASIN  | AREA    | Q <sub>5</sub> | Q <sub>100</sub> |
|--------|---------|----------------|------------------|
| Dev-1  | 6.7 Ac  | 9.1            | 24.6             |
| Dev-2  | 15.6 Ac | 15.0           | 36.7             |
| Dev-3  | 10.1 Ac | 14.9           | 31.1             |
| Dev-4  | 3.2 Ac  | 2.6            | 6.7              |
| Dev-5  | 3.5 Ac  | 4.4            | 10.3             |
| Dev-6  | 4.3 Ac  | 5.3            | 12.2             |
| Dev-7  | 6.9 Ac  | 7.1            | 15.0             |
| Dev-8  | 8.9 Ac  | 10.2           | 21.1             |
| Dev-9  | 2.4 Ac  | 9.2            | 17.9             |
| Dev-10 | 15.9 Ac | 15.3           | 36.3             |
| Dev-11 | 5.9 Ac  | 10.9           | 22.6             |
| Dev-12 | 9.1 Ac  | 7.4            | 19.2             |
| Dev-13 | 11.7 Ac | 13.9           | 31.2             |
| Dev-14 | 6.7 Ac  | 9.9            | 21.3             |
| Dev-15 | 20.8 Ac | 15.2           | 38.5             |
| Dev-16 | 5.5 Ac  | 4.3            | 10.8             |
| Dev-17 | 5.7 Ac  | 6.4            | 14.6             |
| Dev-18 | 2.2 Ac  | 3.0            | 6.8              |

| BASIN  | AREA    | Q <sub>5</sub> | Q <sub>100</sub> |
|--------|---------|----------------|------------------|
| DP-1   | 22.6 Ac | 22.4           | 55.1             |
| DP-2 A | 6.7 Ac  | 7.8            | 18.6             |
| DP-2 B | 16.8 Ac | 21.0           | 48.0             |
| DP-3   | 21.1 Ac | 24.0           | 53.6             |
| DP-4 A | 15.8 Ac | 15.6           | 32.2             |
| DP-4 B | 18.2 Ac | 21.7           | 44.8             |
| DP-5 A | 34.1 Ac | 33.8           | 74.1             |
| DP-5 B | 54.2 Ac | 47.9           | 114.5            |
| DP-5 C | 83.3 Ac | 78.1           | 182.3            |
| DP-6   | 99.5 Ac | 85.4           | 196.8            |
| DP-7   | 20.8 Ac | 18.5           | 44.7             |
| DP-8   | 41.6 Ac | 33.7           | 81.5             |

LEGEND

- EXISTING CONTOURS
- BASIN BOUNDARIES
- BASIN DESIGNATOR  
BASIN AREA (ACRES)  
Q<sub>5</sub> Q<sub>100</sub> (CFS)
- DESIGN POINT
- PROPOSED 2' CONTOURS
- DIRECTION OF FLOW

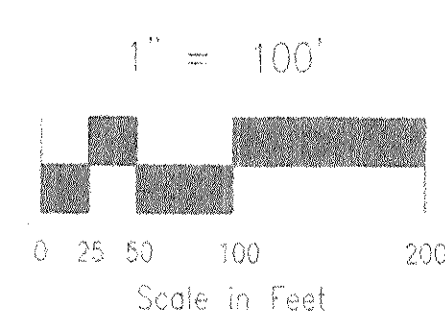


EXHIBIT 4  
SHEET 1 OF 2

FILE: 980279AS.DWG 12/22/99  
PLOT: 980279AS.DWG

**ROCKWELL MINCHOW**  
CONSULTANTS, INC.

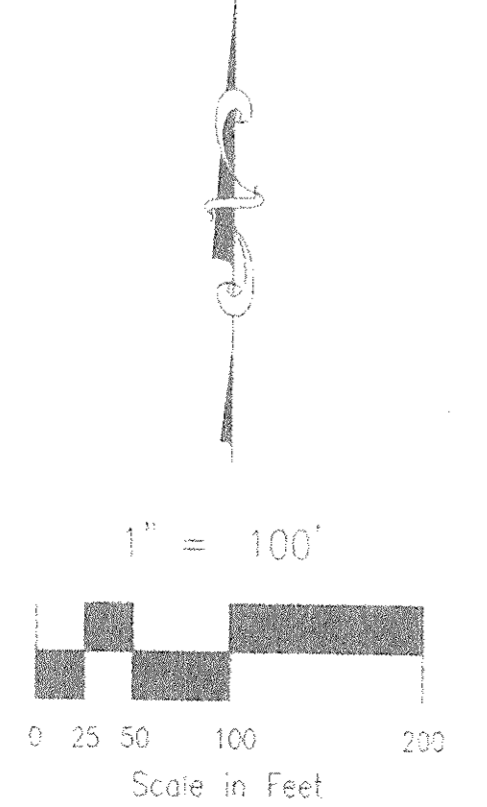
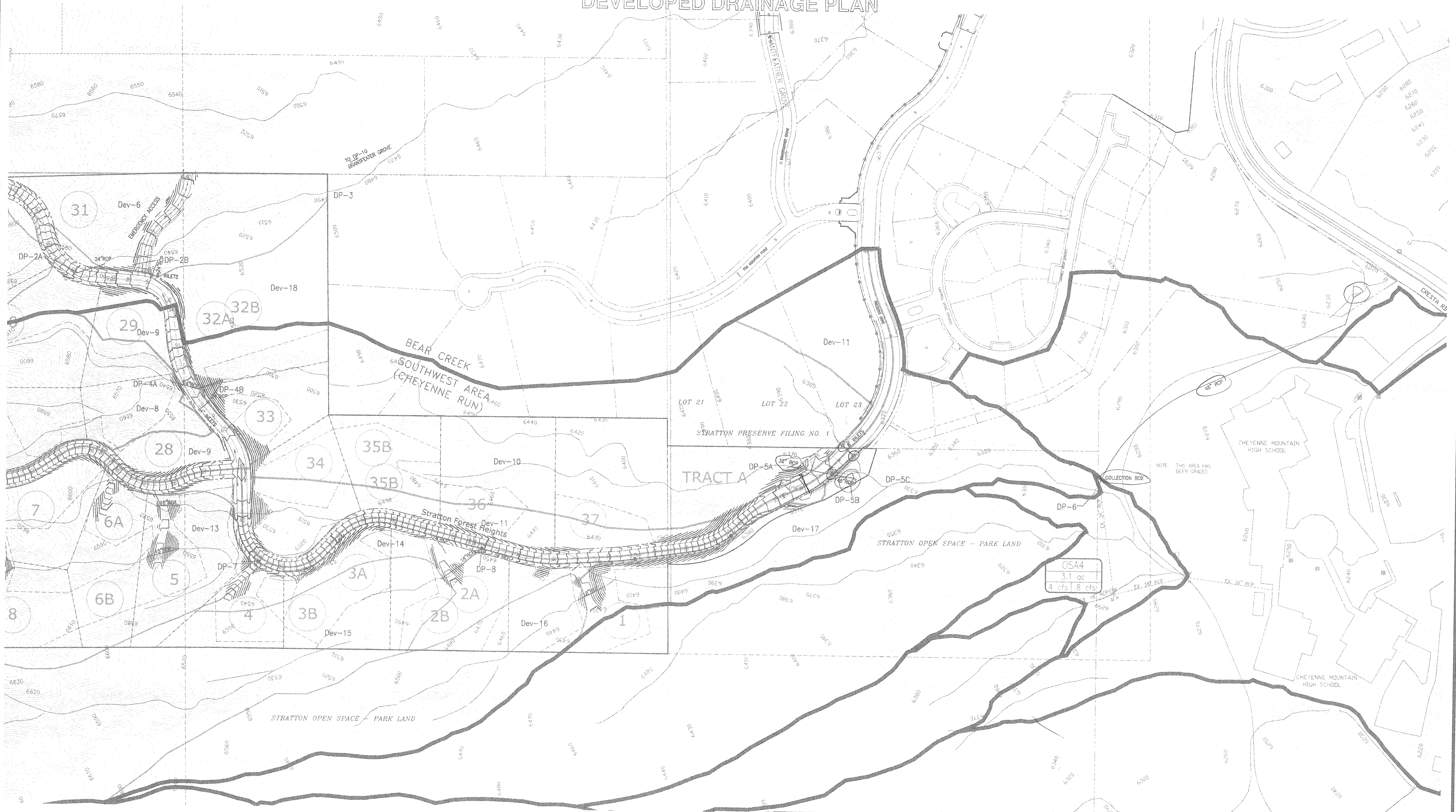
ENGINEERING • SURVEYING  
DESIGN • PLANNING • CONSTRUCTION SERVICES • ENVIRONMENTAL SERVICES

STRATTON FOREST  
DEVELOPED DRAINAGE PLAN

TITLE: 1"=100' DRAWN BY: HAO/FRC 98-027  
SCALE: 12/22/99 CHECKED BY: DAM JOB NO.

# STRATTON FOREST

## DEVELOPED DRAINAGE PLAN



| BASIN  | APEA    | Q <sub>5</sub> | Q <sub>100</sub> |
|--------|---------|----------------|------------------|
| Dev-1  | 6.7 Ac  | 9.1            | 24.6             |
| Dev-2  | 15.6 Ac | 15.0           | 36.7             |
| Dev-3  | 10.1 Ac | 14.9           | 31.1             |
| Dev-4  | 3.2 Ac  | 2.6            | 6.7              |
| Dev-5  | 3.5 Ac  | 4.4            | 10.3             |
| Dev-6  | 4.3 Ac  | 5.3            | 12.2             |
| Dev-7  | 6.9 Ac  | 7.1            | 15.0             |
| Dev-8  | 8.9 Ac  | 10.2           | 21.1             |
| Dev-9  | 2.4 Ac  | 9.2            | 17.9             |
| Dev-10 | 15.9 Ac | 15.3           | 36.3             |
| Dev-11 | 5.9 Ac  | 10.9           | 22.9             |
| Dev-12 | 9.1 Ac  | 7.4            | 19.2             |
| Dev-13 | 11.7 Ac | 13.9           | 31.2             |
| Dev-14 | 6.7 Ac  | 9.9            | 21.3             |
| Dev-15 | 20.8 Ac | 15.2           | 38.5             |
| Dev-16 | 5.5 Ac  | 4.3            | 10.8             |
| Dev-17 | 5.7 Ac  | 6.4            | 14.6             |
| Dev-18 | 2.2 Ac  | 3.0            | 6.8              |

| BASIN  | AREA    | Q <sub>5</sub> | Q <sub>100</sub> |
|--------|---------|----------------|------------------|
| DP-1   | 22.5 Ac | 22.4           | 55.7             |
| DP-2 A | 6.7 Ac  | 7.8            | 18.6             |
| DP-2 B | 16.8 Ac | 21.0           | 46.0             |
| DP-3   | 21.1 Ac | 24.0           | 53.6             |
| DP-4 A | 15.8 Ac | 15.6           | 32.2             |
| DP-4 B | 18.2 Ac | 21.7           | 44.8             |
| DP-5 A | 34.1 Ac | 33.8           | 74.1             |
| DP-5 B | 54.2 Ac | 47.9           | 114.5            |
| DP-5 C | 38.3 Ac | 78.1           | 182.8            |
| DP-6   | 99.5 Ac | 85.4           | 196.9            |
| DP-7   | 20.8 Ac | 18.5           | 44.7             |
| DP-8   | 41.6 Ac | 33.7           | 81.5             |

- LEGEND**
- EXISTING CONTOURS
  - BASIN BOUNDARIES
  - BASIN DELINEATOR
  - BASIN AREA (RESERVED TO 100' LOTS)
  - DESIGN POINT
  - PROPOSED 2' CONTOURS
  - DIRECTION OF FLOW

EXHIBIT 5  
SHEET 2 OF 2

FILE: 980785.DWG 12/22/99  
18613 9802700.dwg

**ROCKWELL MINCHOW**  
CONSULTANTS, INC.

STRATTON FOREST  
DEVELOPED DRAINAGE PLAN

SCALE: 1"=100' DRAWN BY: MAD,FRG  
DATE: 12/22/99 CHECKED BY: DAM

98-027  
JOB NO.