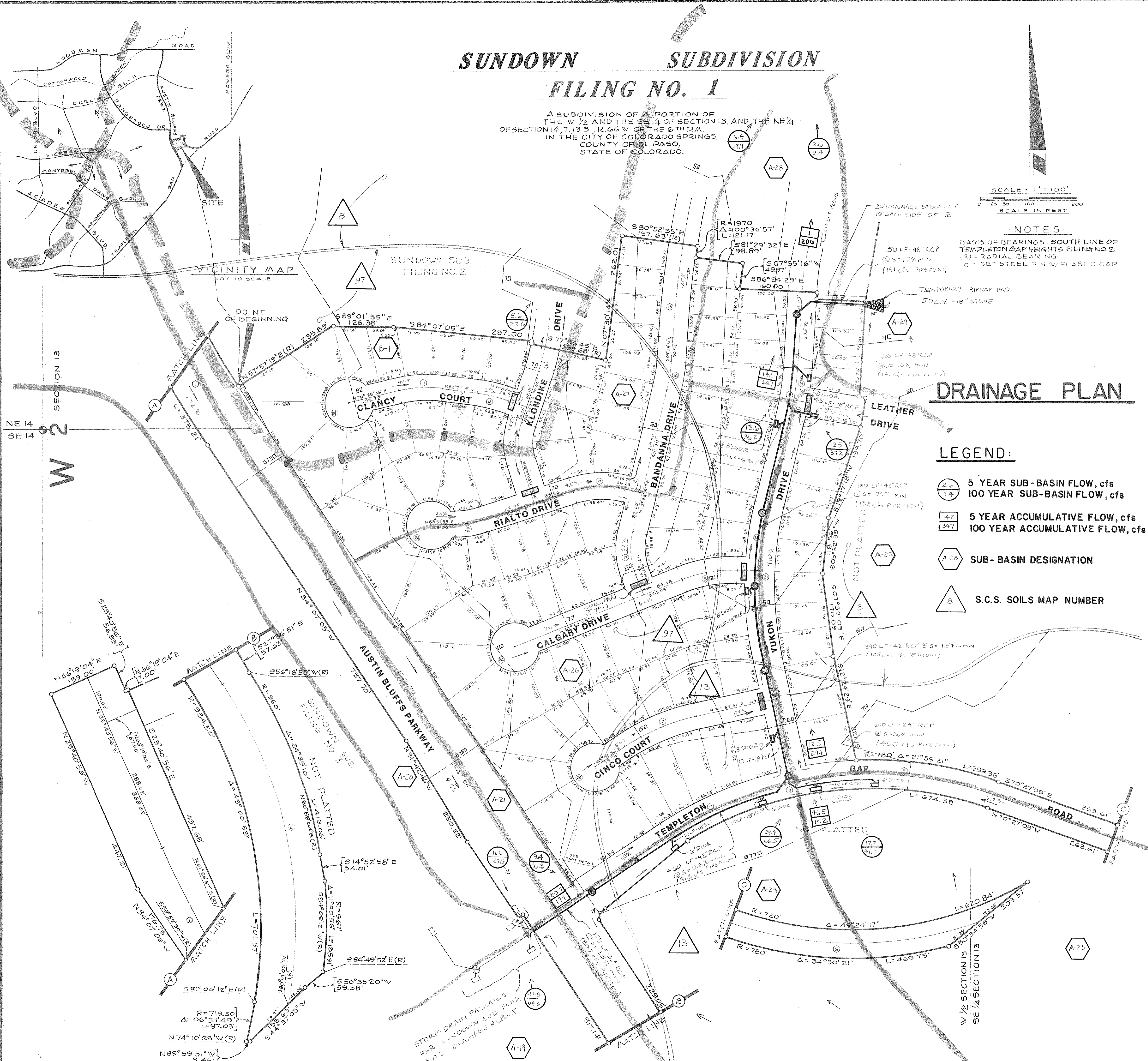


# SUNDOWN SUBDIVISION FILING NO. 1

A SUBDIVISION OF A PORTION OF  
THE W 1/2 AND THE SE 1/4 OF SECTION 13, AND THE NE 1/4  
OF SECTION 14, T. 13 S., R. 66 W. OF THE 6TH P.M.,  
IN THE CITY OF COLORADO SPRINGS,  
COUNTY OF EL PASO,  
STATE OF COLORADO.



**NOTES:**  
BASIS OF BEARINGS: SOUTH LINE OF  
TEMPLETON GAP HEIGHTS FILING NO. 2.  
(R) = RADIAL BEARING  
O = SET STEEL PIN W/ PLASTIC CAP



## DRAINAGE PLAN

- LEGEND:**
- 2.16 5 YEAR SUB-BASIN FLOW, cfs
  - 1.4 100 YEAR SUB-BASIN FLOW, cfs
  - 142 5 YEAR ACCUMULATIVE FLOW, cfs
  - 347 100 YEAR ACCUMULATIVE FLOW, cfs
  - A-23 SUB-BASIN DESIGNATION
  - 97 S.C.S. SOILS MAP NUMBER

PREPARED BY: KLH ENGINEERING CONSULTANTS INC.  
206-208 SUTTON LANE  
COLORADO SPRINGS, COLORADO

DATE: APRIL 1984  
DRAWN BY: RC/TMC  
SHEET 2 OF 2