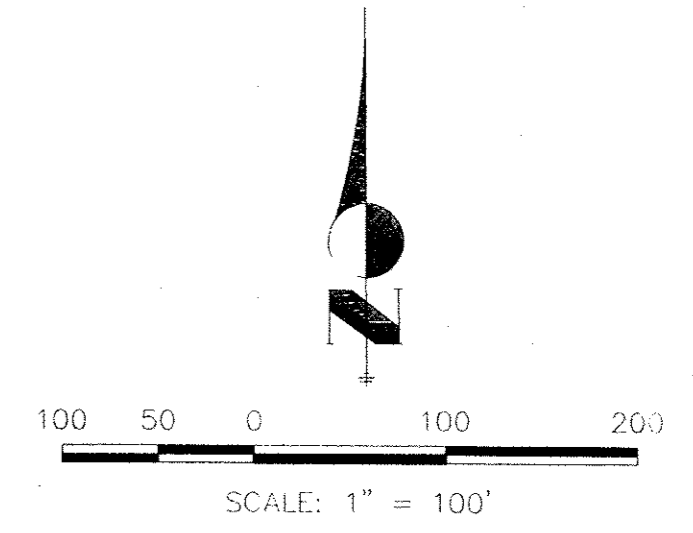


TRAIL RIDGE AT NORTHGATE "A"

CITY OF COLORADO SPRINGS, COUNTY OF EL PASO, STATE OF COLORADO

PRELIMINARY DRAINAGE PLAN

MARCH 1997

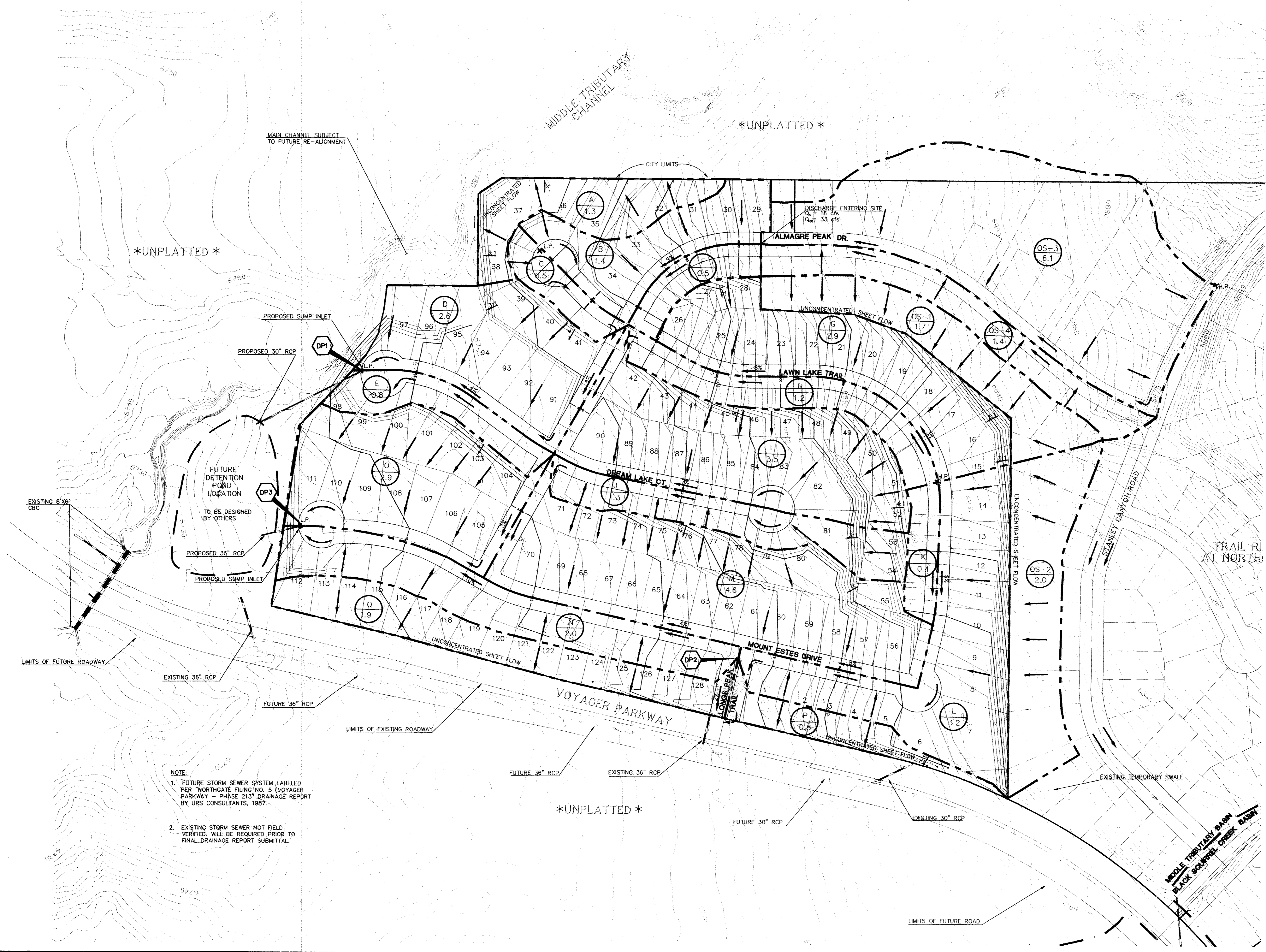


DP	Q ₅ (cfs)	Q ₁₀₀ (cfs)
1	21	44
2	8	18
3	41	48

BASIN	AREA (ACRES)	Q ₅ (cfs)	Q ₁₀₀ (cfs)
A	1.3	3	6
B	1.4	3	6
C	0.5	1	2
D	2.6	5	11
E	0.8	2	4
F	0.5	1	2
G	2.9	7	14
H	1.2	3	6
I	3.5	8	16
J	1.3	3	6
K	0.4	1	2
L	3.2	6	12
M	4.6	11	21
N	2.0	4	8
O	2.9	5	11
P	0.8	2	4
Q	1.9	5	9

BASIN	AREA (ACRES)	Q ₅ (cfs)	Q ₁₀₀ (cfs)
OS-1	1.7	4	8
OS-2	2.0	3	7
OS-3	6.1	13	26
OS-4	1.4	4	7

DESCRIPTION	SYMBOL
EXISTING GROUND CONTOUR	6910
PROPOSED FINISHED CONTOUR	6910
SUBDIVISION BOUNDARY	---
LOT LINE	---
BASIN BOUNDARY	---
MAJOR BASIN BOUNDARY	---
DIRECTION OF DRAINAGE	→
BASIN IDENTIFIER	(A) 10.1
AREA IN ACRES	(A) 10.1
DESIGN POINT	DPX
PROPOSED CROSSSPAN	— — —
EXISTING STORM SEWER	---
PROPOSED STORM SEWER	---
FUTURE STORM SEWER	---
PERMANENT SWALE	→



NOTE:
 1. FUTURE STORM SEWER SYSTEM LABELED PER NORTHGATE FILING NO. 5 (VOYAGER PARKWAY - PHASE 21) DRAINAGE REPORT BY URS CONSULTANTS, 1987.
 2. EXISTING STORM SEWER NOT FIELD VERIFIED, WILL BE REQUIRED PRIOR TO FINAL DRAINAGE REPORT SUBMITTAL.

UNTIL SUCH TIME AS THESE DRAWINGS ARE APPROVED BY THE APPROPRIATE REVIEWING AGENCIES, THE DESIGNER APPROVES THEM FOR THE PURPOSES DESIGNATED BY WRITTEN AUTHORIZATION.

48 HOURS BEFORE YOU DIG, CALL UTILITY LOCATORS
1-800-922-1987
 CITY OF COLORADO SPRINGS DEPT. OF UTILITIES
 GAS, ELECTRIC, WATER AND WASTEWATER

JR Engineering, Ltd.
 4935 North 30th Street
 Colorado Springs, Colorado 80919
 (719) 593-2583 • FAX (719) 528-6613

NO.	REVISION	DATE	BY
1	PER CITY COMMENTS	3/17/97	CMH

SCALE: 1" = 100'
 DATE: 3/17/97
 DES. BY: BES
 CHK. BY: []
 DWN. BY: ARM

TRAIL RIDGE AT NORTHGATE "A"
 PRELIMINARY DRAINAGE PLAN
 SHEET 1 OF 1
 JOB NO. 8639.25