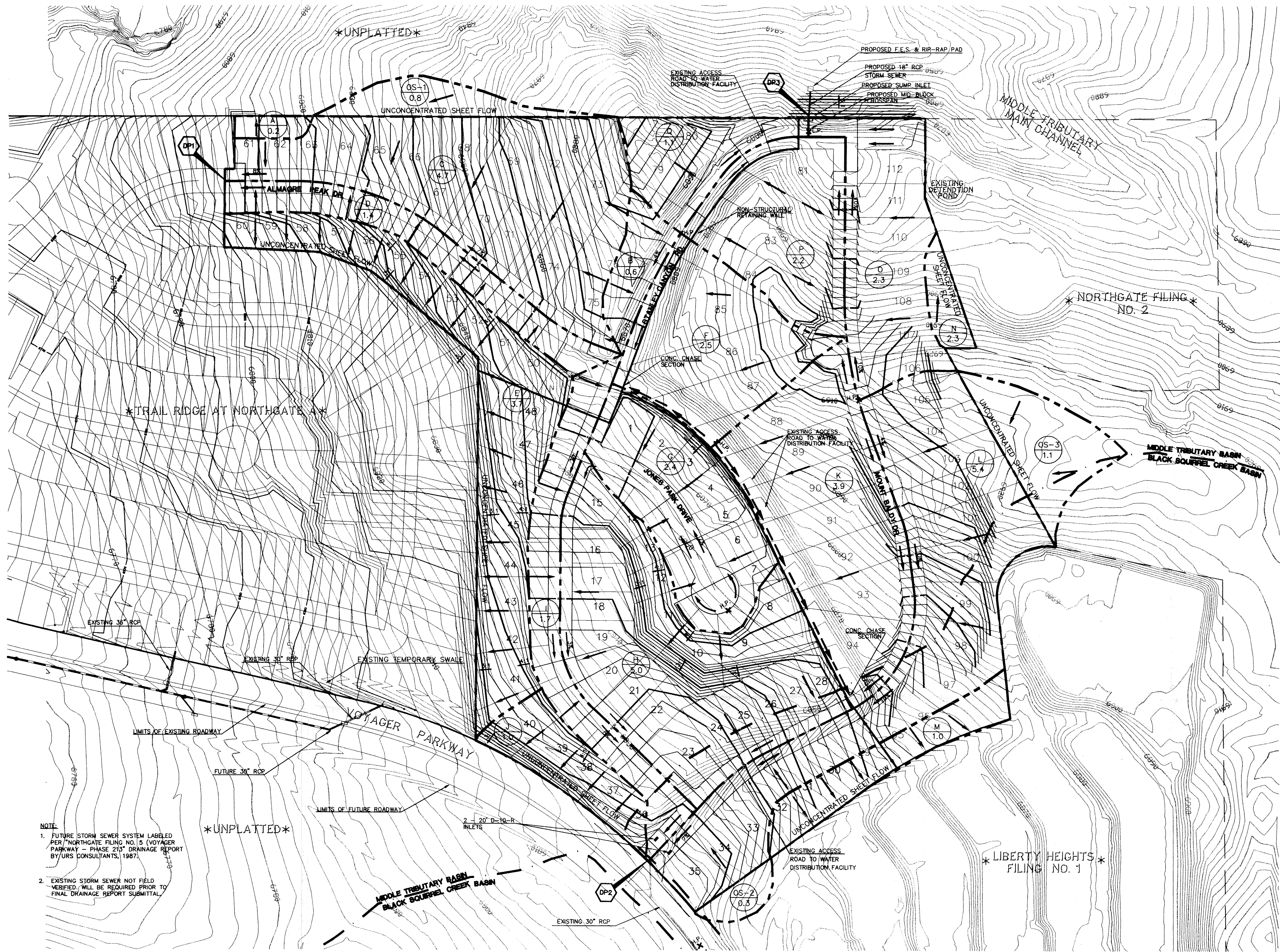
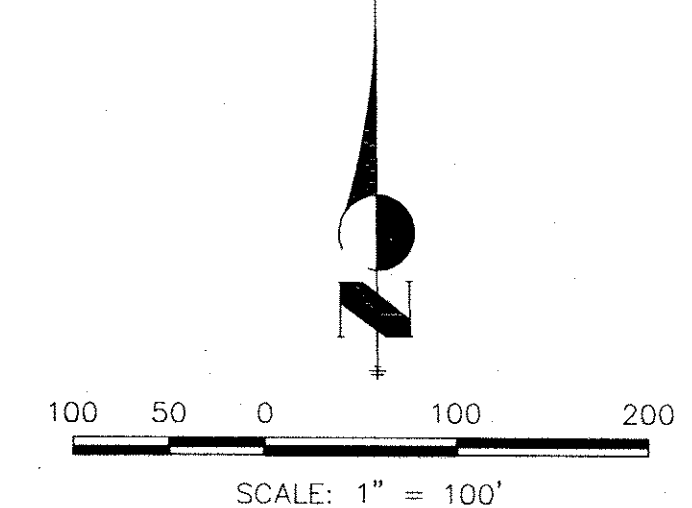


TRAIL RIDGE AT NORTHGATE "B"

CITY OF COLORADO SPRINGS, COUNTY OF EL PASO, STATE OF COLORADO

PRELIMINARY DRAINAGE PLAN

MARCH 1997



DP	Q ₅ (CFS)	Q ₁₀₀ (CFS)
1	16	33
2	24	66
3	10	21

BASIN	AREA (ACRES)	Q ₅ (CFS)	Q ₁₀₀ (CFS)
A	0.2	1	1
B	0.6	2	3
C	4.7	11	23
D	1.4	4	7
E	3.7	8	16
F	2.5	4	9
G	2.4	4	10
H	5.0	10	21
I	1.7	3	7
J	1.0	2	5
K	3.9	5	12
L	5.4	8	20
M	1.0	2	5
N	0.3	1	2
O	2.3	5	9
P	2.2	4	9
Q	1.1	2	5

BASIN	AREA (ACRES)	Q ₅ (CFS)	Q ₁₀₀ (CFS)
OS-1	0.8	1	3
OS-2	0.3	1	1
OS-3	1.1	1	3

LEGEND	
DESCRIPTION	SYMBOL
EXISTING GROUND CONTOUR	
PROPOSED FINISHED CONTOUR	
SUBDIVISION BOUNDARY	
LOT LINE	
BASIN BOUNDARY	
MAJOR BASIN BOUNDARY	
DIRECTION OF DRAINAGE	
BASIN IDENTIFIER	
AREA IN ACRES	
DESIGN POINT	
PROPOSED CROSSSPAN	
EXISTING STORM SEWER	
PROPOSED STORM SEWER	
FUTURE STORM SEWER	
PERMANENT SWALE	

NOTE:
 1. FUTURE STORM SEWER SYSTEM LABELLED PER "NORTHGATE FILING NO. 5 (VOYAGER PARKWAY - PHASE 2) DRAINAGE REPORT BY URS CONSULTANTS, 1987".
 2. EXISTING STORM SEWER NOT FIELD VERIFIED. WILL BE REQUIRED PRIOR TO FINAL DRAINAGE REPORT SUBMITTAL.

UNTIL SUCH TIME AS THESE PLANS ARE REVIEWED AND APPROVED BY THE APPROPRIATE AGENCIES, OR ENGINEERING, ARCHITECTURAL, OR OTHER PROFESSIONAL WRITTEN AUTHORIZATION.

48 HOURS BEFORE YOU DIG,
 CALL UTILITY LOCATORS
1-800-922-1987
 CITY OF COLORADO SPRINGS DEPT. OF UTILITIES
 GAS, ELECTRIC, WATER AND WASTEWATER

JR Engineering, Ltd.
 4835 North 30th Street
 Colorado Springs, Colorado 80919
 (719) 593-2593 • FAX (719) 528-6613

SCALE	1"=100'
DATE	3/17/97
DES. BY	BES
CHK. BY	ARM
DWN. BY	ARM
NO.	1
PER CITY COMMENTS	
REVISION	
DATE	7/07/97
BY	CMH
PROJECT	TRAIL RIDGE AT NORTHGATE "B"
DESCRIPTION	PRELIMINARY DRAINAGE PLAN
SHEET	1 OF 1
JOB NO.	8639.30

FILENAME: 8639300P DATE: 7/07/97 XREFS: EC217ZPC