

MATCH LINE SEE SHEET 3

THE CENTENNIAL FILING NO. 2
KNICKERBOCKER PROPERTIES INC
C/O SENTINEL REAL ESTATE
CORP

CENTENNIAL CORPORATE CENTER
FILING NO. 2 COLORADO SPRINGS
EQUITIES LLC

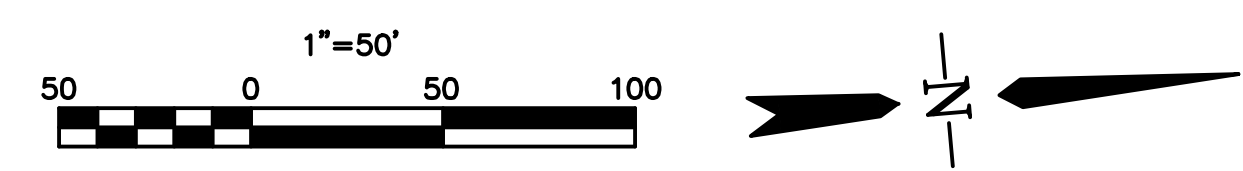
CENTENNIAL CORPORATE CENTER FILING NO. 2
MOUNTAIN SHADOWS PROPERTY CO, LLC

LEGEND

- PROPOSED 2' CONTOURS
- PROPOSED 10' CONTOURS
- EXISTING 2' CONTOUR
- EXISTING 10' CONTOUR
- PROPERTY BOUNDARY
- FLOW PATH
- DRAINAGE BASIN BOUNDARY
- NO BUILD LINES
- LOT LINES
- PHASE LINE
- FLOW DIRECTION
- DESIGN POINT
- BASIN LABEL

DESIGN POINT	Q5	Q100
A	3.65	6.58
B	21.66	56.04
C	24.48	65.48
D	26.45	69.22
Y	1.40	2.64
F	33.36	86.44
G	2.32	4.60
H	3.54	6.91
J	4.92	5.59
L	0.86	1.45
M	1.69	1.92
P	3.28	3.74
Q	1.09	1.98
R	45.19	60.65
S	39.43	172.89
I	54.24	70.90
N	2.03	2.35
O	8.74	9.86
LL	1.04	1.98
MM	0.82	0.90

NOTE:
SEE SHEET 1 FOR OFFSITE INFORMATION



REVISIONS:		
NO.	DESCRIPTION	DATE

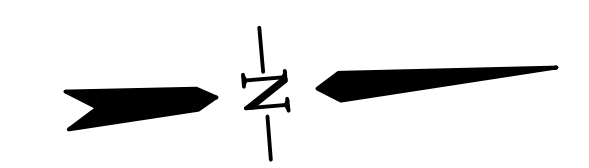
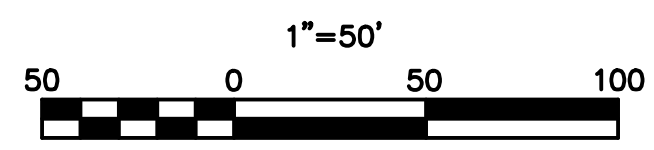
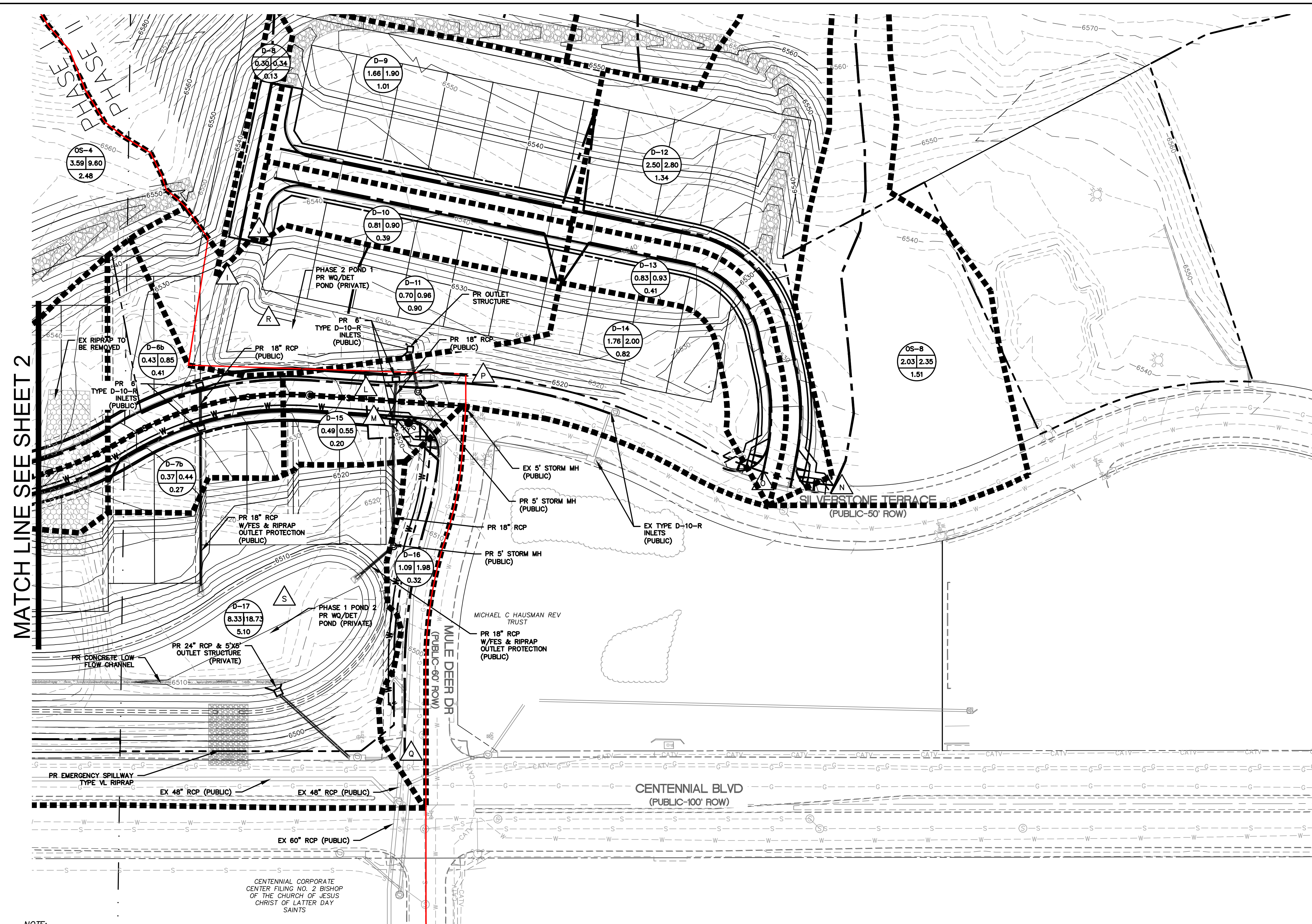
ENGINEER:
DESIGNED BY: CMD DATE: 5-15-17
DRAWN BY: BG DATE: 5-15-17
CHECKED BY: CMD DATE: 5-17-17

48 HOURS BEFORE YOU DIG,
CALL UTILITY LOCATORS
1-800-922-1987
CITY OF COLORADO SPRINGS DEPT. OF UTILITIES
GAS, ELECTRIC, WATER AND WASTEWATER

DSE Dakota Springs Engineering
31 N. TEJON, SUITE 500
COLORADO SPRINGS, CO 80903
P: (719) 227-7388
F: (719) 227-7392

PROJECT TUSCAN FOOTHILLS VILLAGE
SHEET TITLE Proposed Basins
FROM NA TO NA
JOB NO. 181710238 SHEET 2 OF 3

Stantec
1110 ELKTON DRIVE, SUITE B
COLORADO SPRINGS, CO 80907
(719) 432-6889



DESIGN POINT	Q5	Q100
A	3.65	6.58
B	21.66	56.04
C	24.48	65.48
D	26.45	69.22
Y	1.40	2.64
F	33.36	86.44
G	2.32	4.60
H	3.54	6.91
J	4.92	5.59
L	0.86	1.45
M	1.69	1.92
P	3.28	3.74
Q	1.09	1.98
R	45.19	60.65
S	39.43	172.89
T	54.24	70.90
N	2.03	2.35
O	8.74	9.86
LL	1.04	1.98
MM	0.82	0.90

- LEGEND**
- PROPOSED 2' CONTOURS
 - PROPOSED 10' CONTOURS
 - EXISTING 2' CONTOUR
 - EXISTING 10' CONTOUR
 - PROPERTY BOUNDARY
 - FLOW PATH
 - DRAINAGE BASIN BOUNDARY
 - NO BUILD LINES
 - LOT LINES
 - PHASE LINE
 - FLOW DIRECTION
 - DESIGN POINT
 - BASIN LABEL
 - AREA

MATCH LINE SEE SHEET 2

NOTE:
SEE SHEET 1 FOR OFFSITE INFORMATION



REVISIONS:		
NO.	DESCRIPTION	DATE

ENGINEER: _____
 DESIGNED BY: CMD DATE: 5-15-17
 DRAWN BY: BG DATE: 5-15-17
 CHECKED BY: CMD DATE: 5-17-17

48 HOURS BEFORE YOU DIG,
 CALL UTILITY LOCATORS
1-800-922-1987
 CITY OF COLORADO SPRINGS DEPT. OF UTILITIES
 GAS, ELECTRIC, WATER AND WASTEWATER

DSE Dakota Springs Engineering
 31 N. TEJON, SUITE 500
 COLORADO SPRINGS, CO 80903
 P: (719) 227-7388
 F: (719) 227-7392

PROJECT TUSCAN FOOTHILLS VILLAGE
 SHEET TITLE Proposed Basins
 FROM NA TO NA
 JOB NO. 181710238 SHEET 3 OF 3