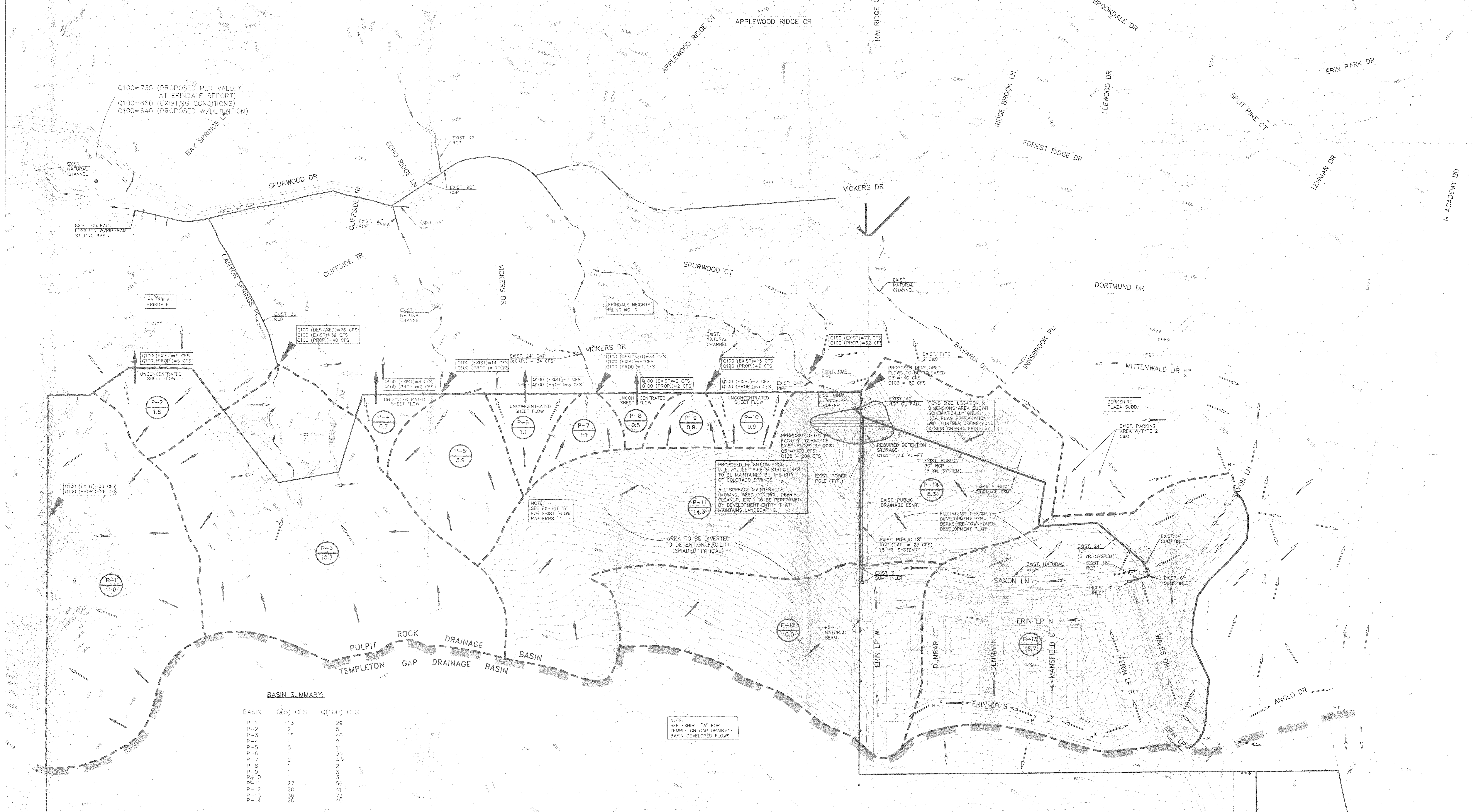
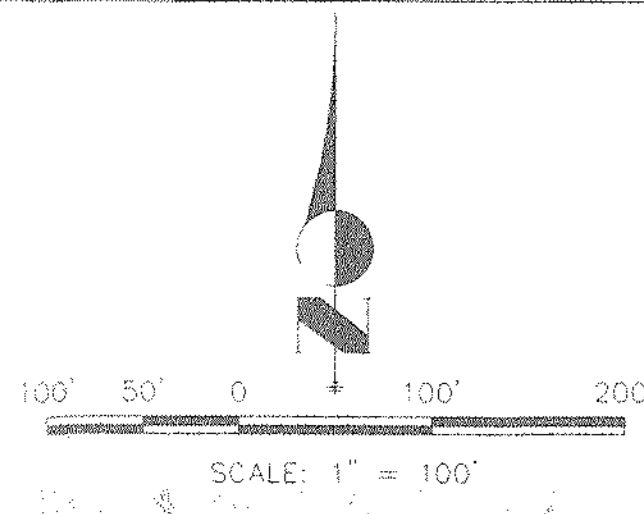


UNIVERSITY PARK - PROPOSED DRAINAGE CONDITIONS (N'LY) EXHIBIT 'C'



Q100=735 (PROPOSED PER VALLEY AT ERINDALE REPORT)
Q100=660 (EXISTING CONDITIONS)
Q100=640 (PROPOSED W/DEFLECTION)

Q100 (EXIST)=5 CFS
Q100 (PROP)=5 CFS

Q100 (DESIGNED)=76 CFS
Q100 (EXIST)=39 CFS
Q100 (PROP)=40 CFS

Q100 (EXIST)=14 CFS
Q100 (PROP)=11 CFS

Q100 (EXIST)=3 CFS
Q100 (PROP)=3 CFS

Q100 (DESIGNED)=34 CFS
Q100 (EXIST)=8 CFS
Q100 (PROP)=4 CFS

Q100 (EXIST)=15 CFS
Q100 (PROP)=3 CFS

Q100 (EXIST)=77 CFS
Q100 (PROP)=62 CFS

PROPOSED DEVELOPED FLOWS TO BE RELEASED
Q5 = 40 CFS
Q100 = 80 CFS

Q100 (EXIST)=30 CFS
Q100 (PROP)=29 CFS

P-2
1.8

P-4
0.7

P-5
3.9

P-6
1.1

P-7
1.1

P-8
0.5

P-9
0.9

P-10
0.9

P-11
14.3

P-14
8.3

P-3
15.7

P-1
11.6

BASIN SUMMARY:

BASIN	Q(5) CFS	Q(100) CFS
P-1	13	29
P-2	2	5
P-3	18	40
P-4	1	11
P-5	5	11
P-6	1	3
P-7	2	4
P-8	1	2
P-9	1	3
P-10	1	3
P-11	27	56
P-12	20	41
P-13	36	73
P-14	20	40

NOTE: SEE EXHIBIT "A" FOR TEMPLETON GAP DRAINAGE BASIN DEVELOPED FLOWS

PROPOSED DETENTION POND INLET/OUTLET PIPE & STRUCTURES TO BE MAINTAINED BY THE CITY OF COLORADO SPRINGS.

ALL SURFACE MAINTENANCE (MOWING, WEED CONTROL, DEBRIS CLEANUP, ETC.) TO BE PERFORMED BY DEVELOPMENT ENTITY THAT MAINTAINS LANDSCAPING.

AREA TO BE DIVERTED TO DETENTION FACILITY (SHADED TYPICAL)

PROPOSED DEVELOPED FLOWS TO BE RELEASED
Q5 = 40 CFS
Q100 = 80 CFS

REQUIRED DETENTION STORAGE
Q100 = 2.6 AC-FT

EXIST. PUBLIC 30" RCP (5 YR. SYSTEM)

EXIST. PUBLIC DRAINAGE ESMT.

EXIST. PUBLIC 18" RCP (5 YR. SYSTEM)

EXIST. 6" SUMP INLET

EXIST. 6" INLET

EXIST. 4" SUMP INLET

EXIST. 6" SUMP INLET

EXIST. 6" SUMP INLET

EXIST. 6" SUMP INLET

EXIST. 6" SUMP INLET

EXIST. 6" SUMP INLET

EXIST. 6" SUMP INLET

EXIST. 6" SUMP INLET