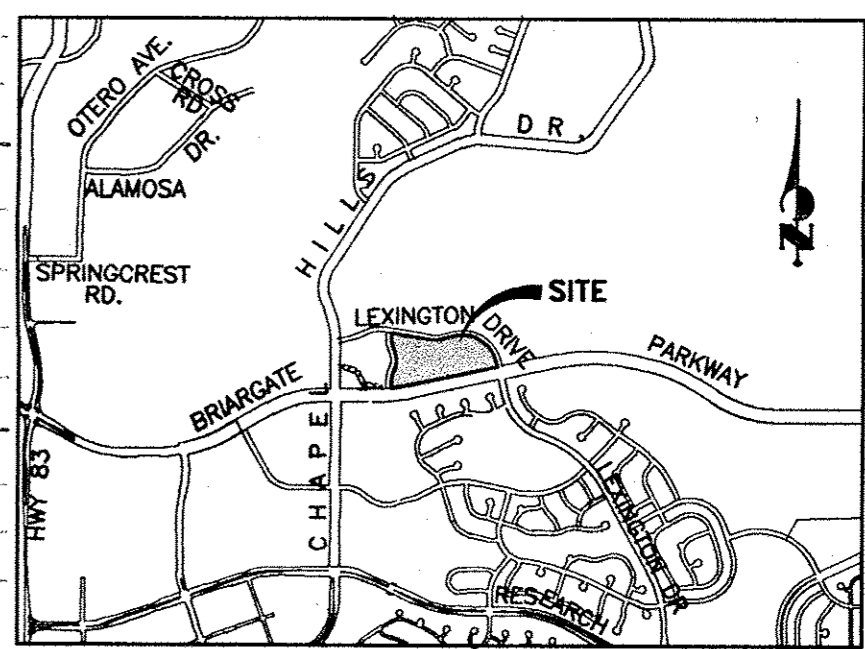
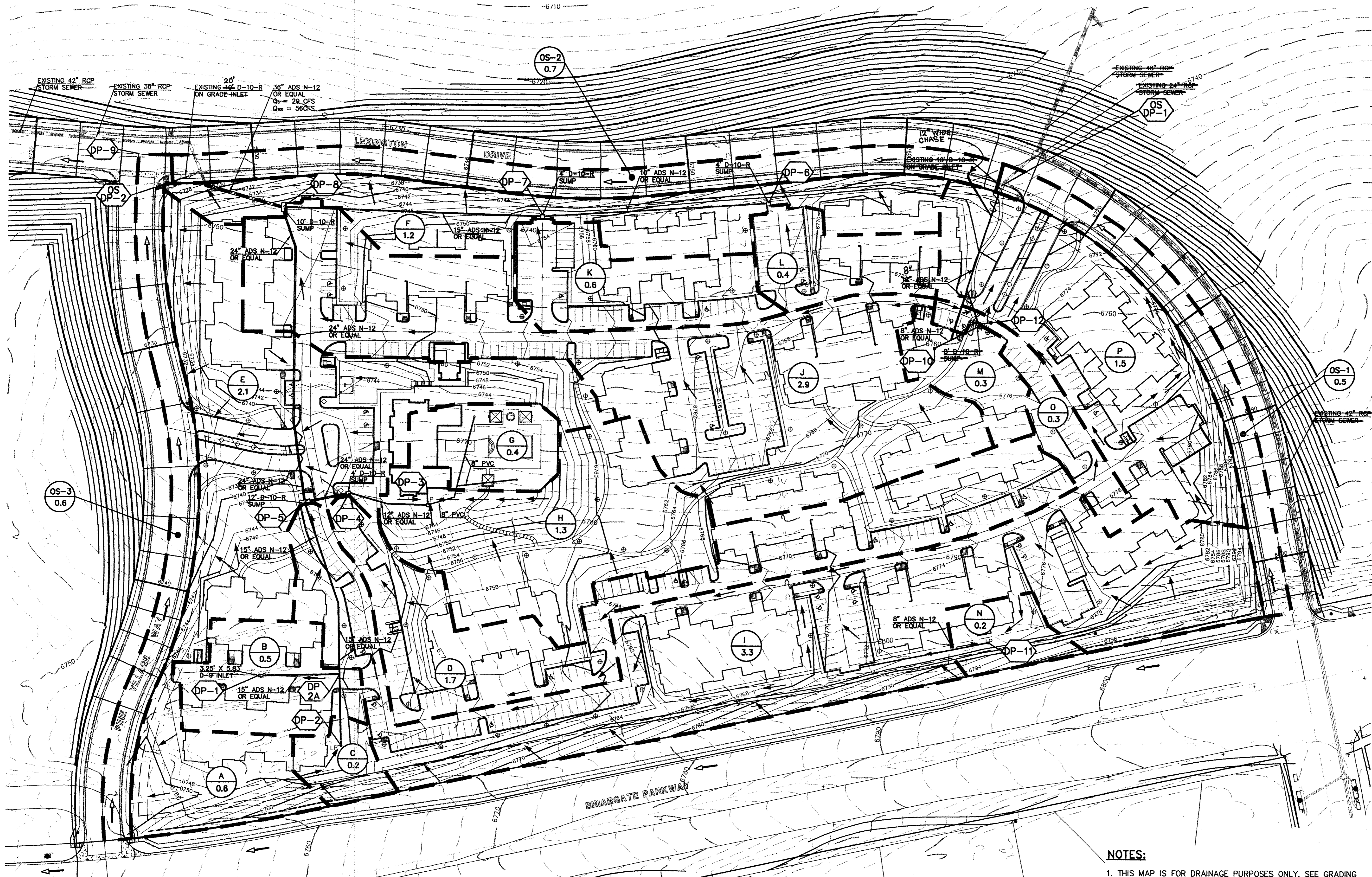
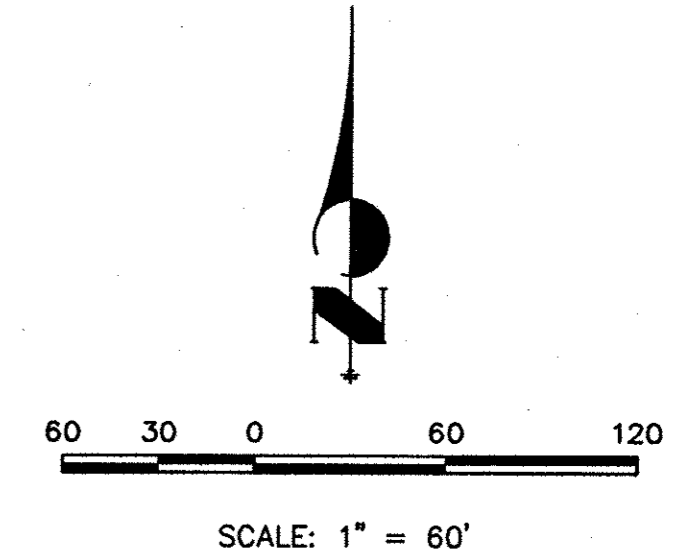


PINE CREEK VILLAGE CENTER FILING NO. 3

CITY OF COLORADO SPRINGS, COUNTY OF EL PASO, STATE OF COLORADO

DRAINAGE MAP

JUNE 1999



VICINITY MAP
N.T.S.

| BASIN | AREA (ACRES) | Q ₅ (CFS) | Q ₁₀₀ (CFS) |
|-------|--------------|----------------------|------------------------|
| A | 0.6 | 1 | 2 |
| B | 0.5 | 2 | 4 |
| C | 0.2 | 1 | 1 |
| D | 1.7 | 5 | 10 |
| E | 2.1 | 4 | 8 |
| F | 1.2 | 2 | 5 |
| G | 0.4 | 2 | 3 |
| H | 1.3 | 1 | 3 |
| I | 3.3 | 9 | 17 |
| J | 2.9 | 9 | 16 |
| K | 0.6 | 2 | 4 |
| L | 0.4 | 2 | 3 |
| M | 0.3 | 1 | 1 |
| N | 0.2 | 1 | 1 |
| O | 0.3 | 1 | 2 |
| P | 1.5 | 4 | 8 |

| DESIGN POINT SUMMARY | | |
|----------------------|----------------------|------------------------|
| DP | Q ₅ (CFS) | Q ₁₀₀ (CFS) |
| 1 | 2 | 4 |
| 2A (PIPE) | 2 | 5 |
| 3 | 1 | 3 |
| 3 (PIPE) | 2 | 5 |
| 4 | 5 | 10 |
| 4 (PIPE) | 6 | 11 |
| 5 | 9 | 17 |
| 5 (PIPE) | 18 | 35 |
| 6 | 2 | 3 |
| 7 | 2 | 4 |
| 7 (PIPE) | 4 | 8 |
| 8 | 9 | 16 |
| 8 (PIPE) | 29 | 56 |
| 9 | 10 | 23 |
| 10 | 1 | 1 |
| 11 | 1 | 1 |
| 12 | 1 | 2 |
| 12 (PIPE) | 2 | 4 |
| OSDP-1 | 6 | 11 |
| OSDP-2 | 7 | 16 |

NOTES:

- THIS MAP IS FOR DRAINAGE PURPOSES ONLY. SEE GRADING PLAN FOR APPROPRIATE GRADING INFORMATION.
- FOR HYDROLOGIC INFORMATION ON LEXINGTON DRIVE AND PINE VILLAGE WAY SEE "MASTER DEVELOPMENT DRAINAGE PLAN FOR VILLAGE CENTER AT PINE CREEK AND PRELIMINARY/FINAL DRAINAGE REPORT FOR VILLAGE CENTER AT PINE CREEK FILING NO.2 AND PINE CREEK VILLAGE CENTER FILING NO.1" PREPARED BY JR ENGINEERING, APPROVED SEPT. 17, 1999
- FOR DESIGN INFORMATION ON LEXINGTON DRIVE AND PINE VILLAGE WAY SEE "LEXINGTON AND PINE VILLAGE WAY STREET IMPROVEMENT PLANS INCLUDING SANITARY AND STORM SEWER" BY JR ENGINEERING, DATED JUNE 1999
- FOR INFORMATION ON PRIVATE DETENTION POND SEE "VILLAGE CENTER PRIVATE DETENTION FACILITY-STORM WATER FACILITY" BY JR ENGINEERING, DATED JULY 1999

LEGEND

- | | | | | | | | |
|----------------------------|--|----------------------------|--|------|------------------|--|------|
| INLET | | CONTOUR - MAJOR (EXIST.) | | 6600 | BASIN IDENTIFIER | | A |
| EXISTING STORM SEWER | | CONTOUR - MINOR (EXIST.) | | 6600 | BASIN AREA | | 4.77 |
| BASIN BOUNDARY (DEVELOPED) | | CONTOUR - MAJOR (PROPOSED) | | 6600 | DESIGN POINT | | DP-1 |
| DIRECTION OF FLOW | | CONTOUR - MINOR (PROPOSED) | | 6600 | | | |
| FENCE LINE | | SUBDIVISION BOUNDARY | | | | | |
| | | LOT LINE | | | | | |

UNTIL SUCH TIME AS THESE DRAWINGS ARE APPROVED BY AGENCIES, JR ENGINEERING, APPROVES THEIR USE ONLY FOR THE PURPOSES DESIGNATED BY WRITER AUTHORIZATION.

48 HOURS BEFORE YOU DIG,
CALL UTILITY LOCATORS
1-800-922-1987
CITY OF COLORADO SPRINGS DEPT. OF UTILITIES
GAS, ELECTRIC, WATER AND WASTEWATER

JR Engineering, Ltd.
1310 Arrowhead Drive
Colorado Springs, Colorado 80907-9449
(719) 598-2585 • FAX (719) 529-6613

| NO. | REVISION | BY | DATE |
|-----|-----------------------------|-----|----------|
| 1 | Delete Sump + Trunc @ DP-12 | VEF | 2-3-2000 |
| 2 | Add 12" SIDEWALK CHASE | | |

PINE CREEK VILLAGE CENTER
FILING NO. 3
DRAINAGE MAP
DRAINAGE LETTER EXHIBIT
SHEET 1 OF 1
JOB NO. 8716.42

X:\B70000_011\B71642\Drawings\B71642DP.dwg Tue Oct 12 10:31:28 1999

X:\B70000_011\B71642\Drawings\B71642DP.dwg 6/12/99 8716.42.dwg, EC, PC