

FLOW IN 54" S.D. PER "FINAL DRAINAGE REPORT FOR CHAPEL HILLS DRIVE" $Q_5 = 189$ cfs $Q_{100} = 378$ cfs

NOTE: IN THE "FINAL DRAINAGE REPORT FOR CHANNEL IMPROVEMENTS CHAPEL HILLS DRIVE BRIDGE OVER PINE CREEK" A SEPARATE 36" DIA OUTFALL WAS PROVIDED FOR THE 16" AND 32" INLETS, $Q_{100} = 100$ cfs. Q_{100} WAS REDUCED TO 325 cfs IN THE 54" DIAMETER.

FLOW IN 36" S.D. $Q_{100} = 90$ cfs (68 cfs PER "FINAL DRAINAGE REPORT FOR CHAPEL HILLS DRIVE" PLUS 22 cfs)

PROPOSED PRIVATE DETENTION POND PEAK FLOWS Q_5 IN = 115 cfs Q_{100} IN = 218 CFS (222) Q_{100} OUT = 18 CFS REQUIRED STORAGE: 5.15 AC-FT

LEGEND

DESCRIPTION	SYMBOL
EXISTING GROUND CONTOUR	6910
PROPOSED FINISHED CONTOUR	6910
SUBDIVISION BOUNDARY	---
BASIN BOUNDARY	---
MDDP BOUNDARY	---
PROPOSED DIRECTION OF DRAINAGE	→
BASIN IDENTIFIER	A
AREA IN ACRES	10.1
DESIGN POINT	XX
PIPE JUNCTION POINT	△
PROPOSED STORM DRAIN	---
EXISTING STORM DRAIN	---

DESIGN POINT SUMMARY

DESIGN POINT	Q_5 (CFS)	Q_{100} (CFS)
1	2	4
2	2	3
3	7	15
4	3629	456
4A	3621	421
5	12	25
6	13	25
7	16	34
8	12	28
9	51	90
10	10	18
11	12	21
12	11	18
13	114	216
14*	8	22
E1	19	38
E2	9	18
W1	7	13
3A	7	14

BASIN SUMMARY

BASIN	AREA (ACRES)	Q_5 (CFS)	Q_{100} (CFS)
1	2.15	7	15
1A	3.17	11	22
1B	1.81	5	10
1C	0.86	4	7
2	11.36	37	74
2A	2.74	7	14
3A	0.76	3	6
3B	1.25	3	5
3C	0.58	2	4
4	3.86	10	20
5A	1.63	8	14
5B	0.75	4	7
5C	2.84	12	21
5D	2.50	11	18
5E	1.68	8	13
6	0.22	1	2
7	1.05	5	8
8	0.38	2	3
9	5.74	19	39
10	2.66	9	18
11	2.30	4	8
12	2.00	3	7
13	5.13	7	16

STORM DRAIN JUNCTION SUMMARY

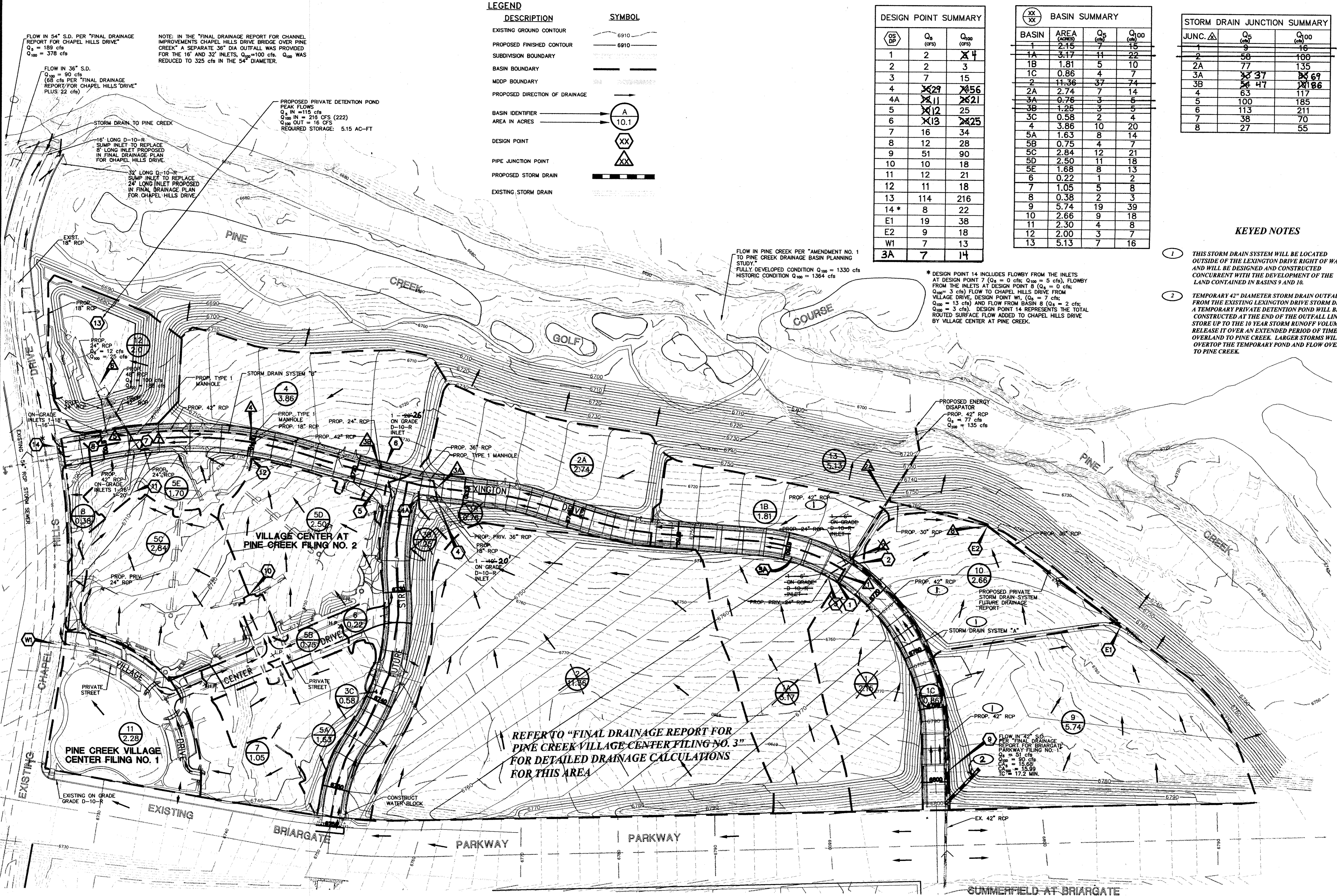
JUNC. △	Q_5 (CFS)	Q_{100} (CFS)
1	9	16
2	58	100
2A	77	135
3A	37	69
3B	47	86
4	63	117
5	100	185
6	113	211
7	38	70
8	27	55

KEYED NOTES

- THIS STORM DRAIN SYSTEM WILL BE LOCATED OUTSIDE OF THE LEXINGTON DRIVE RIGHT OF WAY AND WILL BE DESIGNED AND CONSTRUCTED CONCURRENT WITH THE DEVELOPMENT OF THE LAND CONTAINED IN BASINS 9 AND 10.
- TEMPORARY 42" DIAMETER STORM DRAIN OUTFALL FROM THE EXISTING LEXINGTON DRIVE STORM DRAIN. A TEMPORARY PRIVATE DETENTION POND WILL BE CONSTRUCTED AT THE END OF THE OUTFALL LINE TO STORE UP TO THE 10 YEAR STORM RUNOFF VOLUME AND RELEASE IT OVER AN EXTENDED PERIOD OF TIME OVERLAND TO PINE CREEK. LARGER STORMS WILL OVERTOP THE TEMPORARY POND AND FLOW OVERLAND TO PINE CREEK.

* DESIGN POINT 14 INCLUDES FLOWBY FROM THE INLETS AT DESIGN POINT 7 ($Q_5 = 0$ cfs; $Q_{100} = 5$ cfs), FLOWBY FROM THE INLETS AT DESIGN POINT 8 ($Q_5 = 0$ cfs; $Q_{100} = 3$ cfs) FLOW TO CHAPEL HILLS DRIVE FROM VILLAGE DRIVE, DESIGN POINT W1 ($Q_5 = 7$ cfs; $Q_{100} = 13$ cfs) AND FLOW FROM BASIN 8 ($Q_5 = 2$ cfs; $Q_{100} = 3$ cfs). DESIGN POINT 14 REPRESENTS THE TOTAL ROUTED SURFACE FLOW ADDED TO CHAPEL HILLS DRIVE BY VILLAGE CENTER AT PINE CREEK.

FLOW IN PINE CREEK PER "AMENDMENT NO. 1 TO PINE CREEK DRAINAGE BASIN PLANNING STUDY" FULLY DEVELOPED CONDITION $Q_{100} = 1330$ cfs HISTORIC CONDITION $Q_{100} = 1364$ cfs



REFER TO "FINAL DRAINAGE REPORT FOR PINE CREEK VILLAGE CENTER FILING NO. 3" FOR DETAILED DRAINAGE CALCULATIONS FOR THIS AREA

NOTE: THE INFORMATION SHOWN FOR PINE VILLAGE CENTER FILING NO. 1 AND NO. 2 DEPICTS A PREVIOUS CONCEPT. THE DRAINAGE CONCEPTS SHALL BE UPDATED AT SUCH THAT SITE SPECIFIC DATA IS AVAILABLE. SUBDIVISION BOUNDARIES WILL INDICATED AT THAT TIME.

UNTIL SUCH AS THESE DRAWINGS ARE APPROVED BY THE APPROPRIATE REVIEWING AGENCIES, THEIR USE IS ONLY FOR THE PURPOSES DESIGNATED BY WRITTEN AUTHORIZATION.

48 HOURS BEFORE YOU DIG,
CALL UTILITY LOCATORS
1-800-922-1987
CITY OF COLORADO SPRINGS DEPT. OF UTILITIES
GAS, ELECTRIC, WATER AND WASTEWATER

JR Engineering, Ltd.
4310 ArrowsWest Drive
Colorado Springs, CO 80907-3449
(719) 593-2593 • FAX (719) 528-6613

NO.	REVISION	DATE
1	REVISED TEXT PER CITY COMMENTS	2-9-98
2	OUTFALLS, STORM SEWERS & POND	JRB 8-25-99
3	DELETE/REVISE INLETS & REVISE FLOWS/BASINS 2, 3, 2000	

SCALES:	PLAN:	1"=100'
PROFILE:	1"=100'	
DATE:	1/8/98	
DES. BY:	VAS	
DWN. BY:	SDC	
CHK. BY:	VSF	

VILLAGE CENTER AT PINE CREEK	SHEET 1 OF 1
PRELIMINARY/FINAL DRAINAGE PLAN	JOB NO. 0716.41
EXHIBIT FOR DRAINAGE LETTER	
OVERALL DRAINAGE PLAN	

X: 070000-011.071641.DRAWINGS\p01-dp.dwg Thu Aug 26 10:19:50 1999

XPREFS: 071641HZ, 071641EC, 071641FC
PATH: X:\070000-ALL\071641.DRAWINGS
FILENAME: PREL-DP.DWG