

FLOW IN 54" S.D. PER "FINAL DRAINAGE REPORT FOR CHAPEL HILLS DRIVE"
 $Q_5 = 189$ cfs
 $Q_{100} = 378$ cfs

FLOW IN 36" S.D. PER "FINAL DRAINAGE REPORT FOR CHAPEL HILLS DRIVE" PLUS 22 cfs
 $Q_{100} = 90$ cfs

STORM DRAIN TO PINE CREEK

15' LONG D-10-R SUMP INLET TO REPLACE 8" LONG INLET PROPOSED IN FINAL DRAINAGE PLAN FOR CHAPEL HILLS DRIVE.

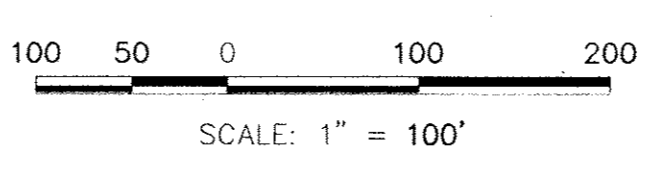
32' LONG D-10-R SUMP INLET TO REPLACE 24" LONG INLET PROPOSED IN FINAL DRAINAGE PLAN FOR CHAPEL HILLS DRIVE.

FLOW IN PINE CREEK PER "AMENDMENT NO. 1 TO PINE CREEK DRAINAGE BASIN PLANNING STUDY"
 FULLY DEVELOPED CONDITION $Q_{100} = 1330$ cfs
 HISTORIC CONDITION $Q_{100} = 1364$ cfs

* DESIGN POINT 14 INCLUDES FLOWBY FROM THE INLETS AT DESIGN POINT 7 ($Q_5 = 0$ cfs, $Q_{100} = 6$ cfs), FLOWBY FROM THE INLETS AT DESIGN POINT 8 ($Q_5 = 0$ cfs, $Q_{100} = 3$ cfs) FLOW TO CHAPEL HILLS DRIVE FROM VILLAGE DRIVE, DESIGN POINT W1, ($Q_5 = 7$ cfs, $Q_{100} = 13$ cfs) AND FLOW FROM BASIN 8 ($Q_5 = 2$ cfs, $Q_{100} = 3$ cfs). DESIGN POINT 14 REPRESENTS THE TOTAL SURFACE FLOW ADDED TO CHAPEL HILLS DRIVE BY VILLAGE CENTER AT PINE CREEK.

LEGEND

DESCRIPTION	SYMBOL
EXISTING GROUND CONTOUR	6910
PROPOSED FINISHED CONTOUR	6910
SUBDIVISION BOUNDARY	---
BASIN BOUNDARY	---
MDDP BOUNDARY	---
PROPOSED DIRECTION OF DRAINAGE	→
BASIN IDENTIFIER	A
AREA IN ACRES	10.1
DESIGN POINT	XX
PIPE JUNCTION POINT	XX
PROPOSED STORM DRAIN	---
EXISTING STORM DRAIN	---



DESIGN POINT SUMMARY

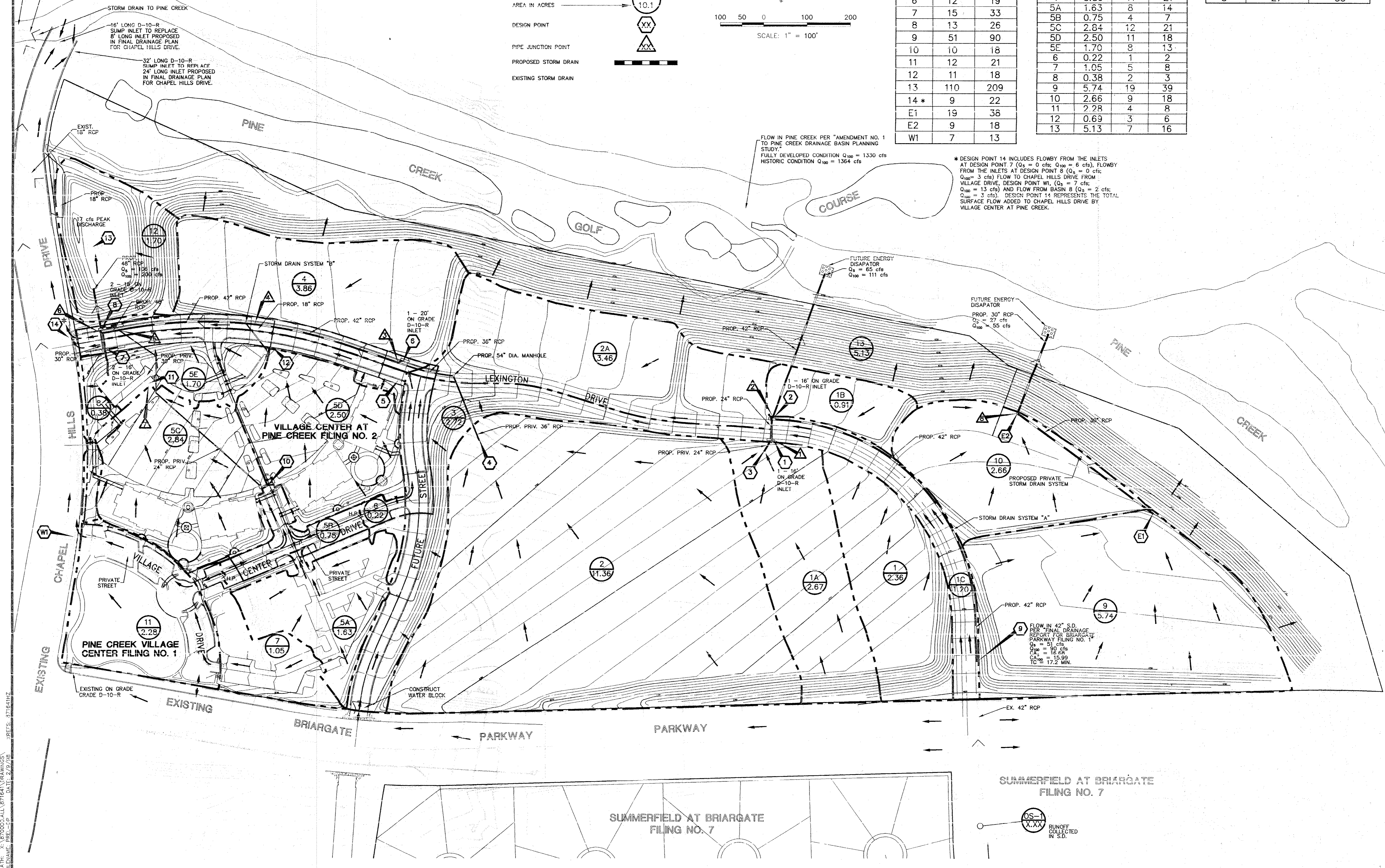
OS DF	Q_5 (cfs)	Q_{100} (cfs)
1	9	19
2	4	7
3	9	18
4	37	74
5	8	19
6	12	19
7	15	33
8	13	26
9	51	90
10	10	18
11	12	21
12	11	18
13	110	209
14*	9	22
E1	19	36
E2	9	18
W1	7	13

BASIN SUMMARY

BASIN	AREA (ACRES)	Q_5 (cfs)	Q_{100} (cfs)
1	2.36	8	16
1A	2.67	9	18
1B	0.91	3	5
1C	1.20	5	9
2	11.36	37	74
2A	3.46	9	18
3	2.72	6	12
4	3.86	11	21
5A	1.63	8	14
5B	0.75	4	7
5C	2.84	12	21
5D	2.50	11	18
5E	1.70	8	13
6	0.22	1	2
7	1.05	5	8
8	0.38	2	3
9	5.74	19	39
10	2.66	9	18
11	2.28	4	8
12	0.69	3	6
13	5.13	7	16

STORM DRAIN JUNCTION SUMMARY

JUNC. Δ	Q_5 (cfs)	Q_{100} (cfs)
1	16	30
2	65	111
3	47	89
4	57	106
5	77	141
6	106	200
7	22	39
8	27	55



PATH: X:\870000\ALL\871641\DRAWINGS\FILENAME_PREL-CP DATE: 2/9/98 REF'S: 271641Z

UNTIL SUCH TIME AS THESE CONDITIONS ARE MET, THE APPROPRIATE REVIEWING AGENCIES, OR ENGINEER/PLD, AGENTS, OR ENGINEERS, FOR THE PURPOSES DESCRIBED BY WRITTEN AUTHORIZATION.

48 HOURS BEFORE YOU DIG,
 CALL UTILITY LOCATORS
1-800-922-1987
 CITY OF COLORADO SPRINGS DEPT. OF UTILITIES
 GAS, ELECTRIC, WATER AND WASTEWATER

JR Engineering, Ltd.
 4935 North 30th Street
 Colorado Springs, Colorado 80919
 (719) 583-2593 • FAX: (719) 528-6613

SCALE	DATE	DES. BY	CHK. BY	DWN. BY
1"=100'	1/8/98	VAS	VSF	DFS

NO.	REVISION	DATE
1	REVISED TEXT PER CITY COMMENTS	2/9/98

VILLAGE CENTER AT PINE CREEK
 PRELIMINARY/FINAL DRAINAGE PLAN
 OVERALL DRAINAGE PLAN

SHEET 1 OF 1
 JOB NO. 8716.41