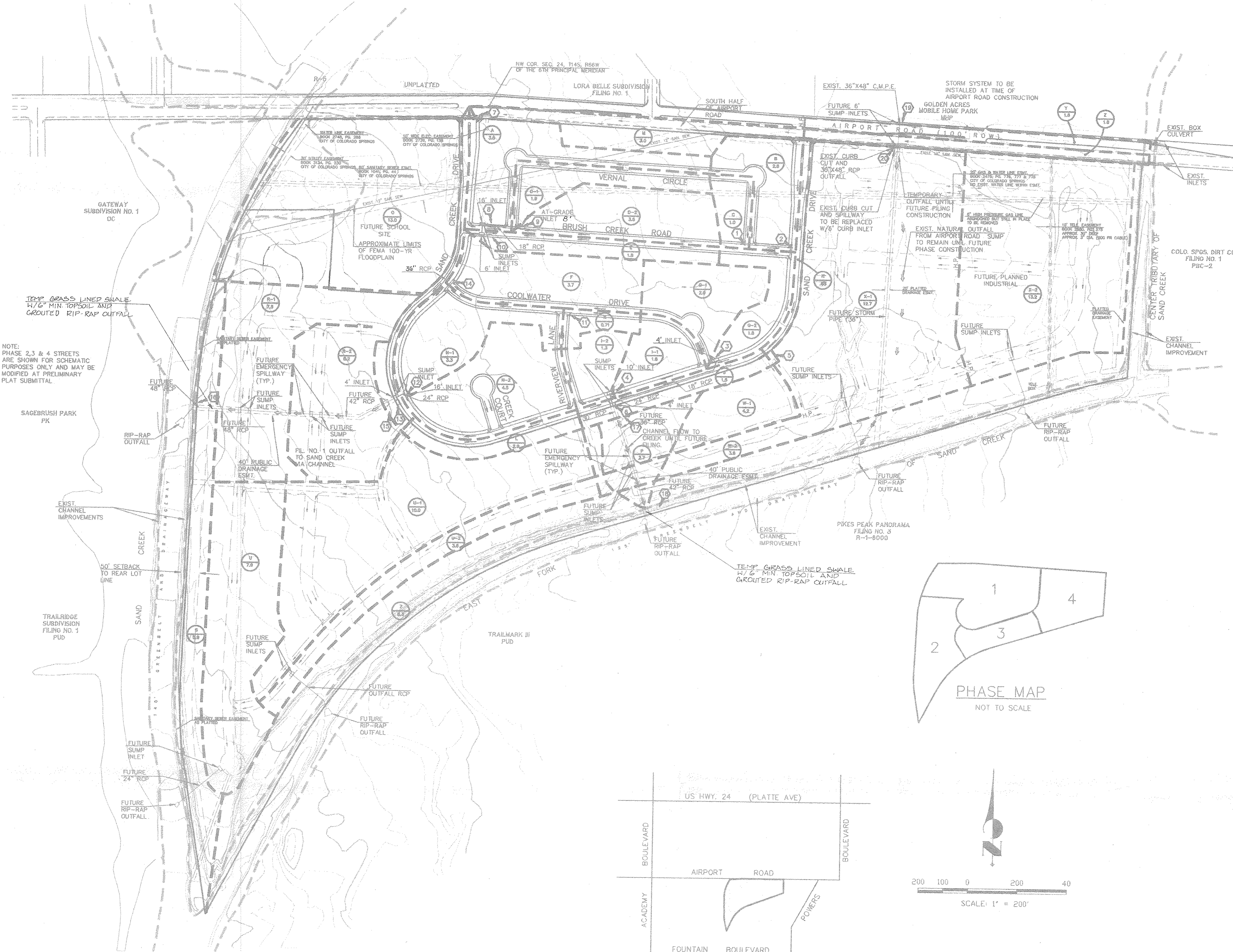


THE VILLAGES AT SAND CREEK M.D.D.P.

DRAINAGE MAP



NOTE:
PHASE 2, 3 & 4 STREETS
ARE SHOWN FOR SCHEMATIC
PURPOSES ONLY AND MAY BE
MODIFIED AT PRELIMINARY
PLAT SUBMITTAL

TEMP GRASS LINED SWALE
H/2" MIN TOPSOIL AND
GRADED RIP-RAP OUTFALL

TEMP GRASS LINED SWALE
H/2" MIN TOPSOIL AND
GRADED RIP-RAP OUTFALL

DESCRIPTION	SYMBOL
EXISTING GROUND CONTOUR	6910
PROPOSED FINISHED CONTOUR	6910
SUBDIVISION BOUNDARY	—○—
LOT LINE	—
BASIN BOUNDARY	—■—
DIRECTION OF DRAINAGE	→
DIRECTION OF FUTURE DRAINAGE	→
BASIN IDENTIFIER AREA IN ACRES	10.10
6" CROSS PAN UNLESS OTHERWISE NOTED	—
DITCH FLOW	←

UNTIL SUCH TIME AS THESE
DRAWINGS ARE APPROVED BY
THE APPROPRIATE REVIEWING
AGENCY, THE ENGINEER, ARCHITECT,
OR OTHER PROFESSIONAL DESIGNER,
THEY ARE NOT TO BE USED FOR
THE PURPOSES DESIGNATED BY
THE WRITTEN AUTHORIZATION.

48 HOURS BEFORE YOU DIG,
CALL UTILITY LOCATORS
1-800-922-1987
CITY OF COLORADO SPRINGS DEPT. OF UTILITIES
GAS, ELECTRIC, WATER AND WASTEWATER

JR Engineering, Ltd.
4885 North 30th Street
Colorado Springs, Colorado 80919
(719) 593-2583 • FAX (719) 528-6613

NO.	REVISION	DATE	BY
1	ADDED CHANNEL NOTE	4/12/94	KCC

SCALE: VERT. 1" = 5' HORIZ. 1" = 40'

DATE: 4/12/94

DES. BY: []

CHK. BY: []

DWN. BY: MAW

THE VILLAGES AT SAND CREEK
MASTER DEVELOPMENT
DRAINAGE PLAN

SHEET 1 OF 1

JOB NO. 8631.00

FILENAME: 8631000.DWG DATE: 10/19/94 (XREFS: 8631000.Z; TOPO-FI, CREEK)