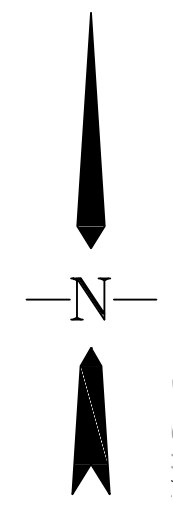


# PRE-DEVELOPMENT BASIN MAP

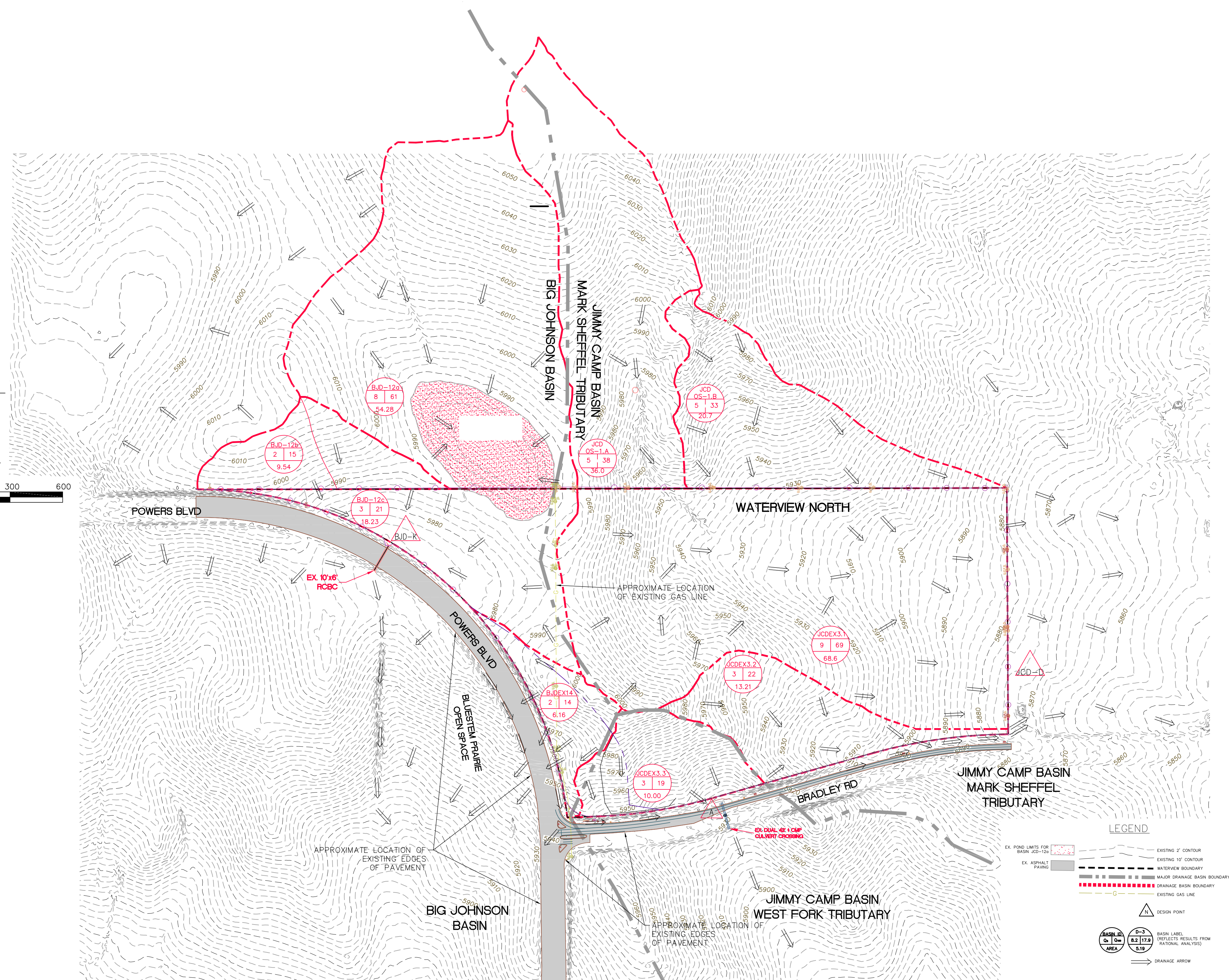


1" = 300'



BASIN ID	BASIN AREA (Ac.)	DESIGN POINT	RATIONAL ANALYSIS RESULTS	
			Qs (CFS)	Q100 (CFS)
BJD-12a	54.28		8	61
BJD-12b	9.54		2	15
BJD-12c	18.23		3	21
		BJD-K	4	31
JCD OS-1A	36.0		5	38
JCD OS-1B	20.7		5	33
JCDEX-3.1	68.6		9	69
JCDEX-3.2	13.21		3	22
		JCD-D	12	84
JCDEX-3.3	10.0		3	19
BJDEX14	6.16		2	14
		A	3	19
		A*	5	25

A\* - MODELLED AS BASIN OS-1 IN THE FINAL DRAINAGE REPORT FOR FILING 1 OF TRAILS AT ASPEN RIDGE, APP'D ON FEBRUARY 13, 2020.



**LEGEND**

- EX. POND LIMITS FOR BASIN JCD-12a
- EX. ASPHALT PAVING
- EXISTING 2' CONTOUR
- EXISTING 10' CONTOUR
- WATERVIEW BOUNDARY
- MAJOR DRAINAGE BASIN BOUNDARY
- DRAINAGE BASIN BOUNDARY
- EXISTING GAS LINE
- DESIGN POINT
- BASIN ID, Qs, Q100, AREA
- BASIN LABEL REFLECTS RESULTS FROM RATIONAL ANALYSIS
- DRAINAGE ARROW

REVISIONS:		
NO.	DESCRIPTION	DATE

ENGINEER:  
 DESIGNED BY: CEB DATE: 11-05-20  
 DRAWN BY: CEB DATE: 11-05-20  
 CHECKED BY: CKC DATE: 11-05-20

48 HOURS BEFORE YOU DIG,  
 CALL UTILITY LOCATORS  
 1-800-922-1987  
 CITY OF COLORADO SPRINGS DEPT. OF UTILITIES  
 GAS, ELECTRIC, WATER AND WASTEWATER

**DSE** Dakota Springs Engineering  
 31 N. TEJON, SUITE 518  
 COLORADO SPRINGS, CO 80903  
 P: (719) 227-7388  
 F: (719) 227-7392

PROJECT WATERVIEW NORTH  
 SHEET TITLE PRE-DEVELOPMENT BASIN MAP  
 FROM n/a TO n/a  
 JOB NO. 02-19-05 SHEET 2 OF 3

20001 Dakota Springs Engineering, 31 N. Tejon, Suite 518, Colorado Springs, CO 80903. File: 02-19-05 PRE-DEVELOPMENT BASIN MAP. 11/05/2020 12:28:41 PM. JCD-12a.dwg. Scale: 1"=300'. Plot Date: 11/05/2020 12:28:41 PM.