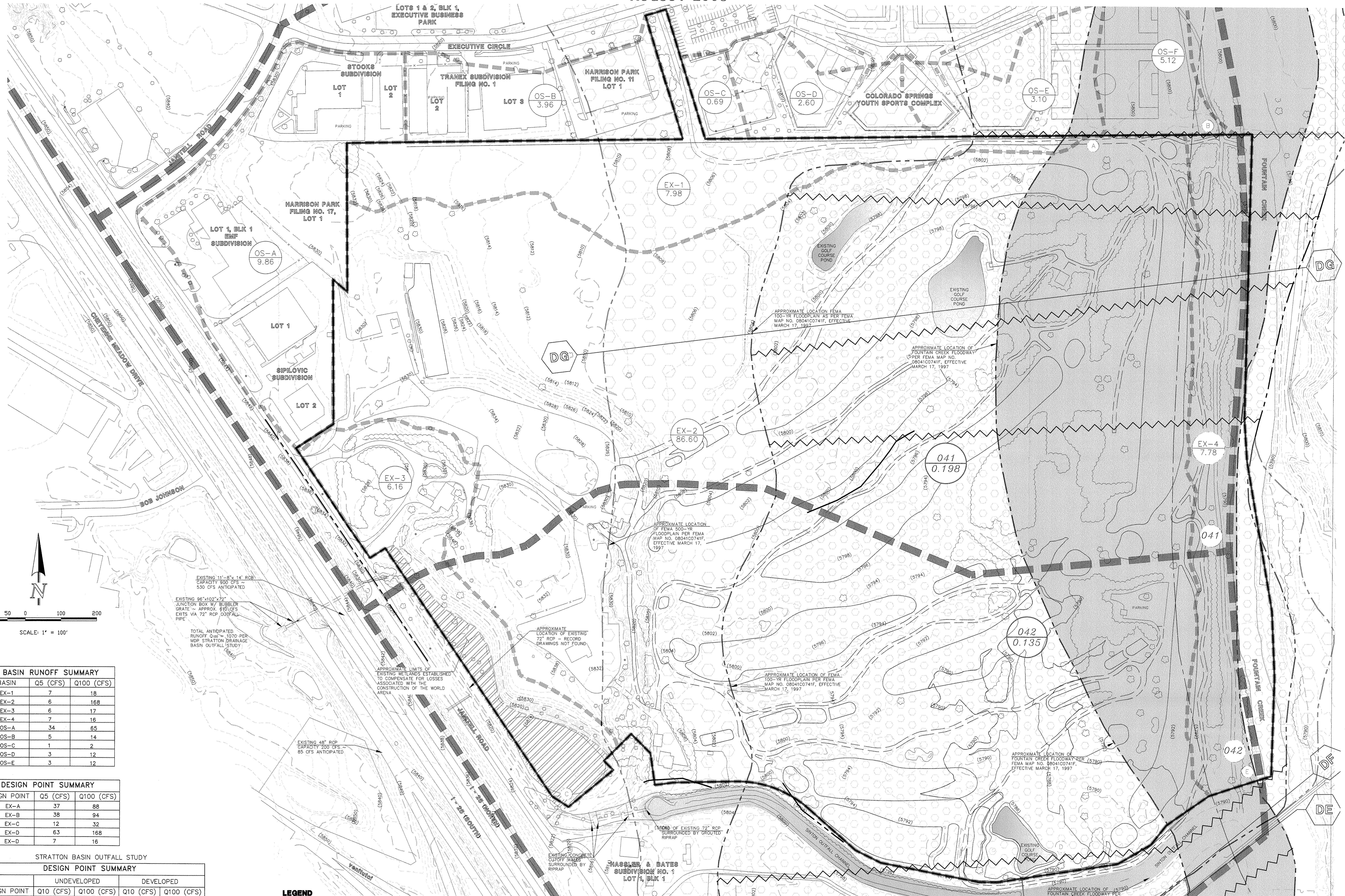


MASTER DEVELOPMENT DRAINAGE PLAN VINEYARD COMMERCE PARK

AUGUST 2008



BASIN RUNOFF SUMMARY

BASIN	Q5 (CFS)	Q100 (CFS)
EX-1	7	18
EX-2	6	168
EX-3	6	17
EX-4	7	16
OS-A	34	65
OS-B	5	14
OS-C	1	2
OS-D	3	12
OS-E	3	12

DESIGN POINT SUMMARY

DESIGN POINT	Q5 (CFS)	Q100 (CFS)
EX-A	37	88
EX-B	38	94
EX-C	12	32
EX-D	63	168
EX-E	7	16

STRATTON BASIN OUTFALL STUDY

DESIGN POINT SUMMARY

DESIGN POINT	UNDEVELOPED		DEVELOPED	
	Q10 (CFS)	Q100 (CFS)	Q10 (CFS)	Q100 (CFS)
041	130	250	230	380
042	110	200	230	350

LEGEND

- EXISTING INDEX CONTOUR 5910
- EXISTING NOMINAL CONTOUR 5910
- SUBDIVISION BOUNDARY
- LOT LINE
- BASIN IDENTIFIER D
- AREA IN ACRES 1.41
- MASTER DRAINAGE PLAN BASIN BOUNDARY PER STRATTON DRAINAGE BASIN OUTFALL STUDY
- DIRECTION OF DRAINAGE
- EXISTING STORM SEWER
- EXISTING STORM INLET
- EXISTING WETLANDS AREA
- EXISTING WETLANDS AREA AS TAKEN FROM STRATTON DRAINAGE BASIN OUTFALL STUDY
- BASIN IDENTIFIER D
- AREA IN ACRES 1.41
- FEMA 500-YR FLOODPLAIN BOUNDARY LINE
- FEMA 100-YR FLOODPLAIN BOUNDARY LINE
- FEMA FLOODWAY BOUNDARY LINE
- 500-YR FLOODPLAIN ZONE PER FEMA MAP NO. 08041C0741F, 08041C0742F
- 100-YR FLOODPLAIN ZONE PER FEMA MAP NO. 08041C0741F, 08041C0742F
- FLOODWAY PER FEMA MAP NO. 08041C0741F, 08041C0742F
- HISTORIC BASIN BOUNDARY

VINEYARD COMMERCE PARK
M.D.P. MAP (EXISTING)
JOB NO. 2204.00
08/18/08
SHEET 1 OF 1



X:\2008\DRAWINGS\DRAINAGE\08041C0741F-HST.dwg, 8/18/2008, 1:54:00 PM, CCES1083C.dwg

MASTER DEVELOPMENT DRAINAGE PLAN VINEYARD COMMERCE PARK

JUNE 2007



BASIN RUNOFF SUMMARY

BASIN	Q5 (CFS)	Q100 (CFS)
A	9	18
B	3	6
C	1	2
D	21	42
E	8	15
F	16	37
G	13	27
H	13	26
I	21	43
J	29	58
K	15	31
L	6	13
M	15	28
N	11	22
O	22	45
P	5	10
Q	30	76
R	1	1
S	0	1
T	6	16
OS-A	34	65
OS-A1	13.7*	30.4*
OS-A2	11	21
OS-B	5	14
OS-C	1	2
OS-D	3	12
OS-E	3	11
OS-F	3	11

DESIGN POINT SUMMARY

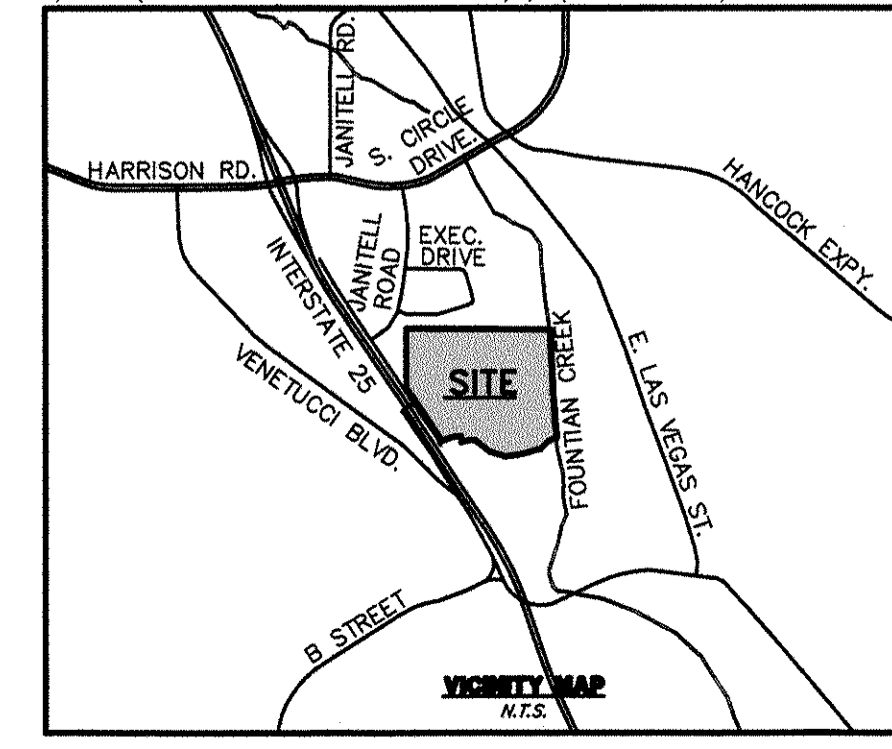
DESIGN POINT	Q5 (CFS)	Q100 (CFS)
1/A	34/22	65/46
2/B	43/32	89/71
3	3	6
4/C	45/34	93/75
5/D	46/35	96/76
6/E	46/35	99/81
7/F	48/37	106/90
8	21	42
9	8	15
10	30	65
11	6	16
12	9	17
13	31	71
13A	38	88
14	11	22
15	11	22
16	15	31
17	6	13
18	14	29
19	15	28
20	14	29
21	56	114
22	11	22
23	5	11
24	11	22
25	15	30
26	95	200
27	111	246
28	6	16
29	6	16

PIPE RUN SUMMARY

PIPE RUN	Q5 (CFS)	Q100 (CFS)
1	43	89
2	2	3
3	3	6
4	45	93
5	46	96
6	21	42
7	4	7
8	8	15
9	27	54
10	55	116
11	15	31
12	6	13
13	21	43

PIPE RUN SUMMARY

PIPE RUN	Q5 (CFS)	Q100 (CFS)
14	14	29
15	33	67
16	46	92
17	11	22



LEGEND

EXISTING GROUND CONTOUR
PROPOSED FINISHED CONTOUR
SUBDIVISION BOUNDARY
LOT LINE
PROPOSED BASIN BOUNDARY

BASIN IDENTIFIER
AREA IN ACRES

AS TAKEN FROM STRATTON DRAINAGE BASIN OUTFALL STUDY

BASIN IDENTIFIER
AREA IN SQ MILES

MASTER DRAINAGE PLAN BASIN BOUNDARY PER STRATTON DRAINAGE BASIN OUTFALL STUDY

DIRECTION OF DRAINAGE

EXISTING STORM SEWER

EXISTING STORM INLET

PROPOSED STORM SEWER

EXISTING WETLANDS AREA

EXISTING WETLANDS AREA

REVISED 500-YR FLOODPLAIN BOUNDARY LINE (LOW-F)

REVISED 100-YR FLOODPLAIN BOUNDARY LINE (LOW-F)

FEMA 500-YR FLOODPLAIN BOUNDARY LINE

FEMA 100-YR FLOODPLAIN BOUNDARY LINE

FEMA FLOODWAY BOUNDARY LINE

500-YR FLOODPLAIN ZONE PER FEMA MAP NO. 08041C0741F, 08041C0742F

100-YR FLOODPLAIN ZONE PER FED. MAP NO. 08041C0741F, 08041C0742F

FLOODWAY PER FEMA MAP NO. 08041C0741F, 08041C0742F

PROPOSED STORM INLET

LOW POINT/HIGH POINT

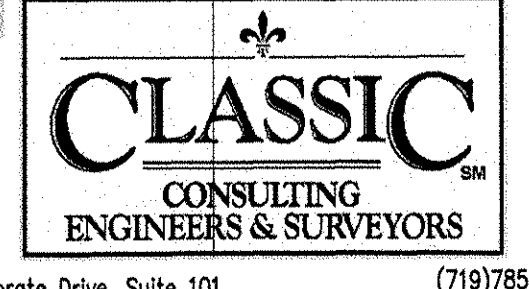
CHANNEL ENLARGEMENT TO BE MODIFIED TO MEET DETENTION POND STANDARDS

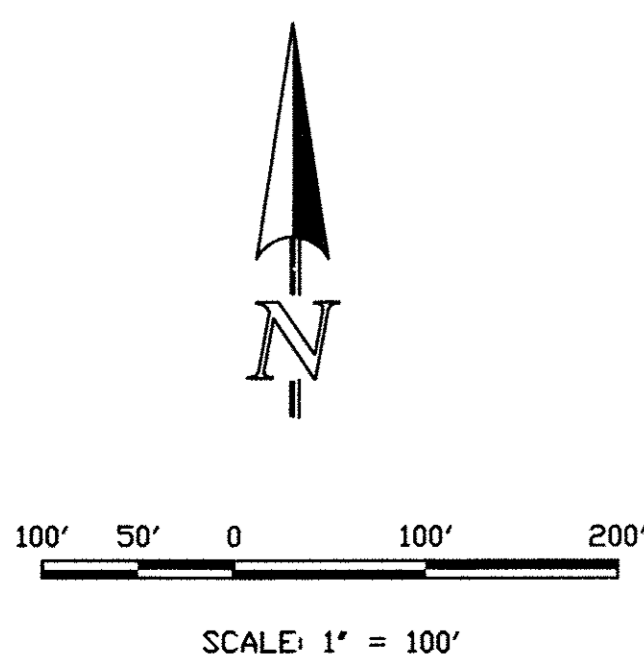
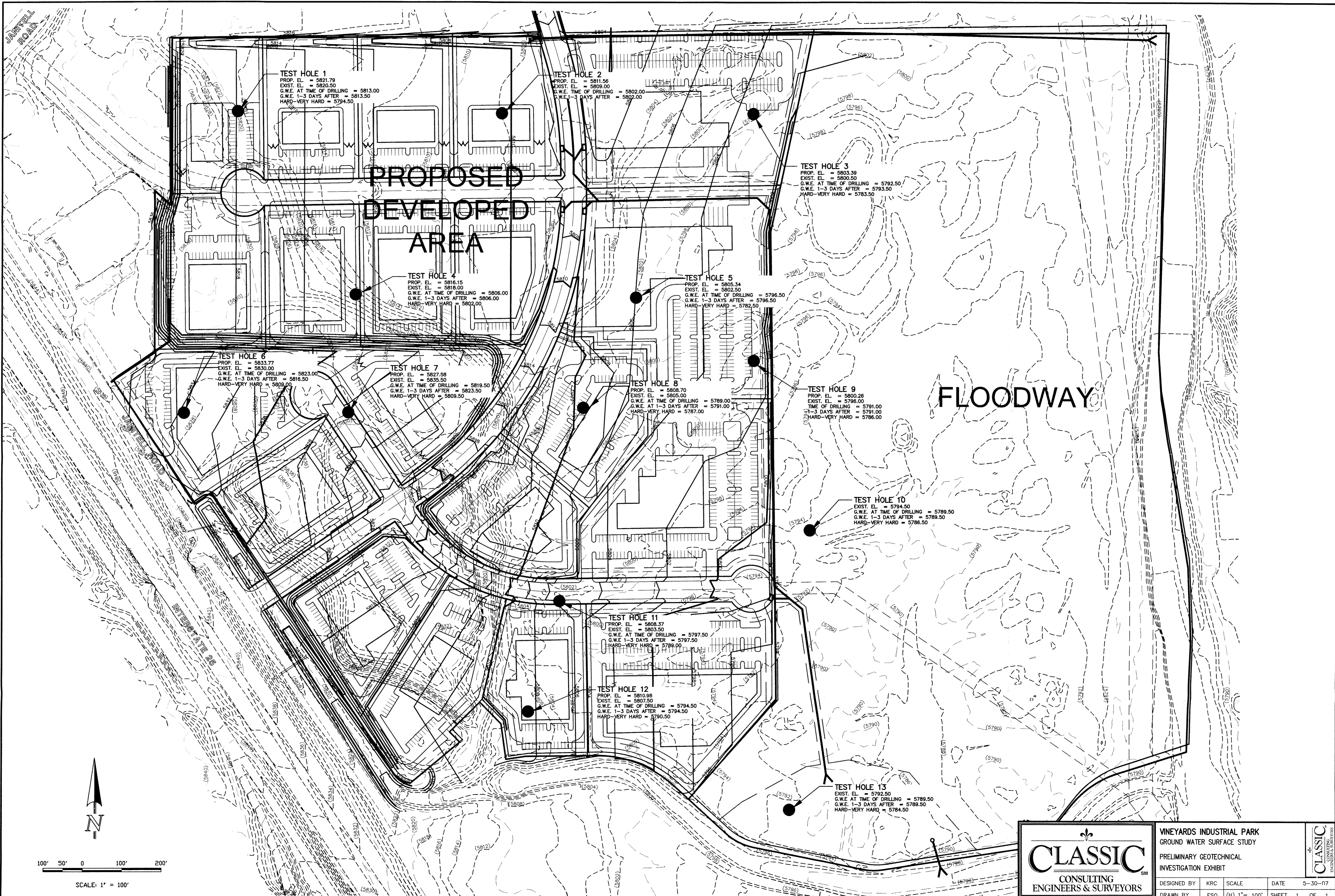
EXISTING 30" C/DW DISCHARGE PIPE LIMITED TO HISTORIC DISCH.

PIPE RUN

DESIGN POINT

VINEYARD COMMERCE PARK
M.D.D.P. MAP (DEVELOPED)
JOB NO. 2204.00
07/01/07
SHEET 1 OF 1





		VINEYARDS INDUSTRIAL PARK	
		GROUND WATER SURFACE STUDY	
PRELIMINARY GEOTECHNICAL INVESTIGATION EXHIBIT		DESIGNED BY	KRC
DRAWN BY		ESO	(H) 1" = 100'
CHECKED BY		(V) 1" = N/A	DATE 5-30-07
6385 Corporate Drive, Suite 101 Colorado Springs, Colorado 80919		(719) 785-0790 (719) 785-0799 (Fax)	SHEET 1 OF 1 JOB NO. 2204.00

X:\2204\DRAWINGS\RAINAGE\TESTHOLE EXHIBIT.dwg, 7/9/2008 2:44:18 PM, CCES-KP-K3