

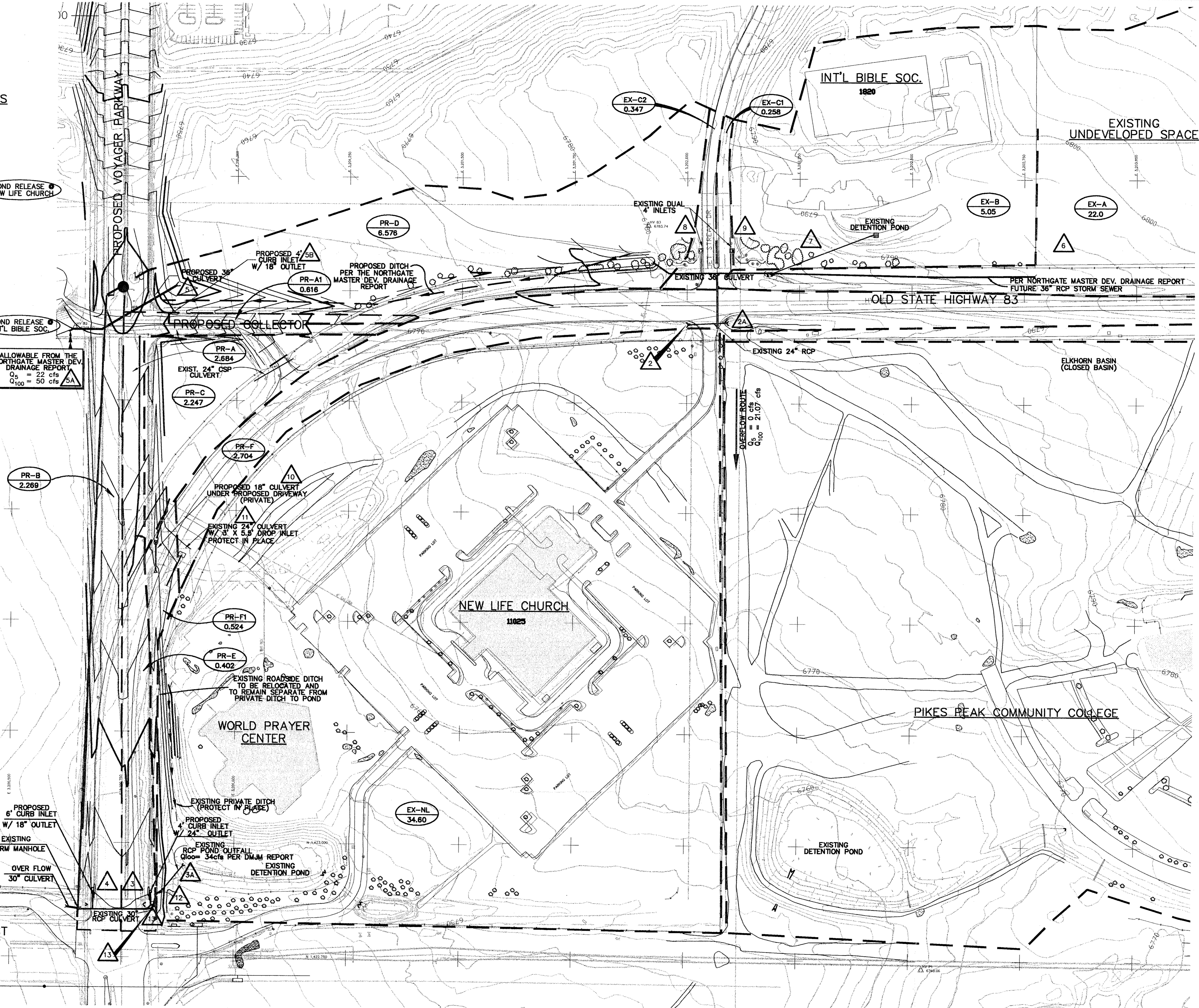
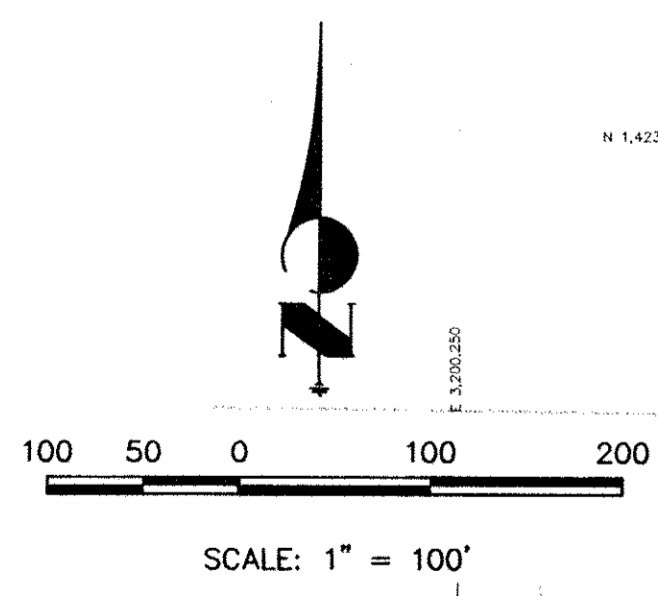
FLOWS AT DESIGN POINTS

24" CULVERT OUTLET	2	Q ₅ = 14.35 cfs Q ₁₀₀ = 14 cfs
24" CULVERT INLET	2A	Q ₅ = 14.35 cfs Q ₁₀₀ = 35.07 cfs
PR-A	3	Q ₅ = 10.39 cfs Q ₁₀₀ = 18.87 cfs
N.L. CHURCH	3A	Q ₁₀₀ = 34 cfs
PR-B	4	Q ₅ = 10.21 cfs Q ₁₀₀ = 18.54 cfs
EX-A/EX-B	5	Q ₅ = 19.28 cfs Q ₁₀₀ = 46.90 cfs
EX-C1&2/PR-D	5A	Q ₅ = 20.43 cfs Q ₁₀₀ = 49.10 cfs
PR-A1	5B	Q ₅ = 2.88 cfs Q ₁₀₀ = 5.27 cfs
EX-A	6	Q ₅ = 20 cfs Q ₁₀₀ = 42 cfs
EX-B	7	Q ₅ = 3.7 cfs Q ₁₀₀ = 4.0 cfs
EX-C1	8	Q ₅ = 1.62 cfs Q ₁₀₀ = 2.97 cfs
EX-C2	9	Q ₅ = 1.21 cfs Q ₁₀₀ = 2.21 cfs
PR-C	10	Q ₅ = 0.81 cfs Q ₁₀₀ = 1.89 cfs
EX-G/EX-H PR-C/PR-E	11	Q ₅ = 8.18 cfs Q ₁₀₀ = 22.00 cfs
EX-G/EX-H PR-C/PR-E/PR-F	12	Q ₅ = 10.15 cfs Q ₁₀₀ = 26.29 cfs
DP-12 & NEW LIFE POND	13	Q ₁₀₀ = 62.82 cfs

NOTE:
DESIGN POINT 12 IS EXTERNAL TO THE NEW LIFE CHURCH POND, UPSTREAM END OF ITS OUTFLOW AND IN THE EXISTING DITCH.

LEGEND

- BASIN-A BASIN DESIGNATION
- 2.92 AREA IN ACRES
- BASIN BOUNDARY
- 1 DESIGN POINT
- DIRECTION OF FLOW
- 6550 EXISTING 2' CONTOUR LINE
- 6550 PROPOSED 10' CONTOUR LINE
- EXISTING STORM DRAIN



UNTIL SUCH TIME AS THESE DRAWINGS ARE REVIEWED BY THE APPROPRIATE REVIEWING AGENCIES, OR ENGINEERING, LTD. APPROVES, THEIR USE ONLY FOR THE PURPOSES DESIGNATED BY WRITTEN AUTHORIZATION.

JR Engineering, Ltd.
4310 Arroyo West Drive
Colorado Springs, CO 80907-3449
(719) 599-2683 • FAX (719) 528-6613

NO.	REVISION	BY	DATE
1	REVISED PER CITY COMMENTS		

PLAN: 1"=100'	NO.:
PROFILE: N/A	1
DATE: 11/18/99	DESIGNED BY: SKC
DRAWN BY: SKC	CHECKED BY:

VOYAGER PARKWAY
PHASE 3
DRAINAGE STUDY
DEVELOPED CONDITIONS

SHEET 1 OF 1
JOB NO. 8896.45

48 HOURS BEFORE YOU DIG,
CALL UTILITY LOCATORS
1-800-922-1987
CITY OF COLORADO SPRINGS DEPT. OF UTILITIES
GAS, ELECTRIC, WATER AND WASTEWATER

X: 8896000.dwg 11/18/99 08:45:00 D:\Projects\8896\8896.dwg Mon May 01 16:53:44 2000

XREFS:
PATH: 8896\DRAWINGS\DMJM
FILENAME: DMJM-PP.DWG