

**Vicinity Map**  
NOT TO SCALE

**DEVELOPED DRAINAGE BASIN TABLE**

BASIN	AREA (Ac.)	Q <sub>s</sub> (CFS)	Q <sub>100</sub> (CFS)
1	1.75	4.3	8.7
1A	2.11	5.5	11.2
2	1.06	3.4	6.7
3	1.13	3.0	6.4
4	1.20	3.2	6.9
5	0.82	2.5	5.0
6	0.80	2.2	4.5
7	0.32	1.1	2.1
8	1.93	4.8	9.6
9	3.67	8.2	17.3
10	0.66	1.8	3.8
11	1.42	3.5	7.8
12	0.66	1.9	3.8
13	2.62	6.2	13.0
14	1.08	2.5	5.4
15	1.08	2.5	5.4
16	1.32	3.7	7.5
17	1.70	4.2	8.6
18	0.90	2.2	4.7
19	0.75	2.4	4.7
20	1.10	2.6	5.8
21	1.30	3.6	7.3
22	1.06	2.2	4.4
23	2.16	5.1	10.4
24	2.34	5.9	13.1
25	0.42	0.5	1.8
26	0.42	0.9	2.1
27	0.45	1.0	2.2
28	0.79	0.8	3.2

**DEVELOPED DESIGN POINTS**

BASIN	AREA (Ac.)	Q <sub>s</sub> (CFS)	Q <sub>100</sub> (CFS)
DP#1	5.80	13.5	27.5
DP#2	3.15	7.9	16.6
DP#3	4.27	10.9	22.5
DP#4	10.50	23.4	48.4
DP#5	18.08	38.9	80.9
DP#6	24.77	51.9	107.9
DP#7	29.48	61.8	128.4

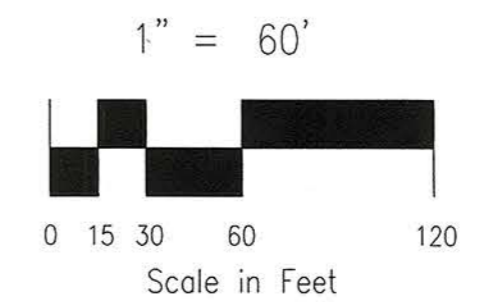
- LEGEND**
- EXISTING 2' CONTOUR
  - EXISTING 10' CONTOUR
  - PROPOSED 2' CONTOUR
  - PROPOSED 10' CONTOUR
  - DIRECTION OF FLOW
  - DEVELOPED BASINS
  - DIRECTION OF FLOW
  - PROPOSED INLET & PIPE
  - DRAINAGE BASIN
  - DESIGN POINT
  - PIPE NUMBER

**PIPE FLOWS**

PIPE	Q <sub>100</sub> (CFS)	PIPE SIZE
1A	9.1	18" RCP
1	27.5	24" RCP
2	11.3	18" RCP
3	19.6	18" RCP
4	9.3	18" RCP
5	36.8	30" RCP
6	56.4	30" RCP
7	11.7	18" RCP
8	68.1	30" RCP
9	8.7	18" RCP
10	9.2	18" RCP
11	86.0	36" RCP
12	11.7	18" RCP
13	12.9	18" RCP
14	110.6	42" RCP
15	10.5	18" RCP
16	133.1	42" RCP
17	145.8	42" RCP

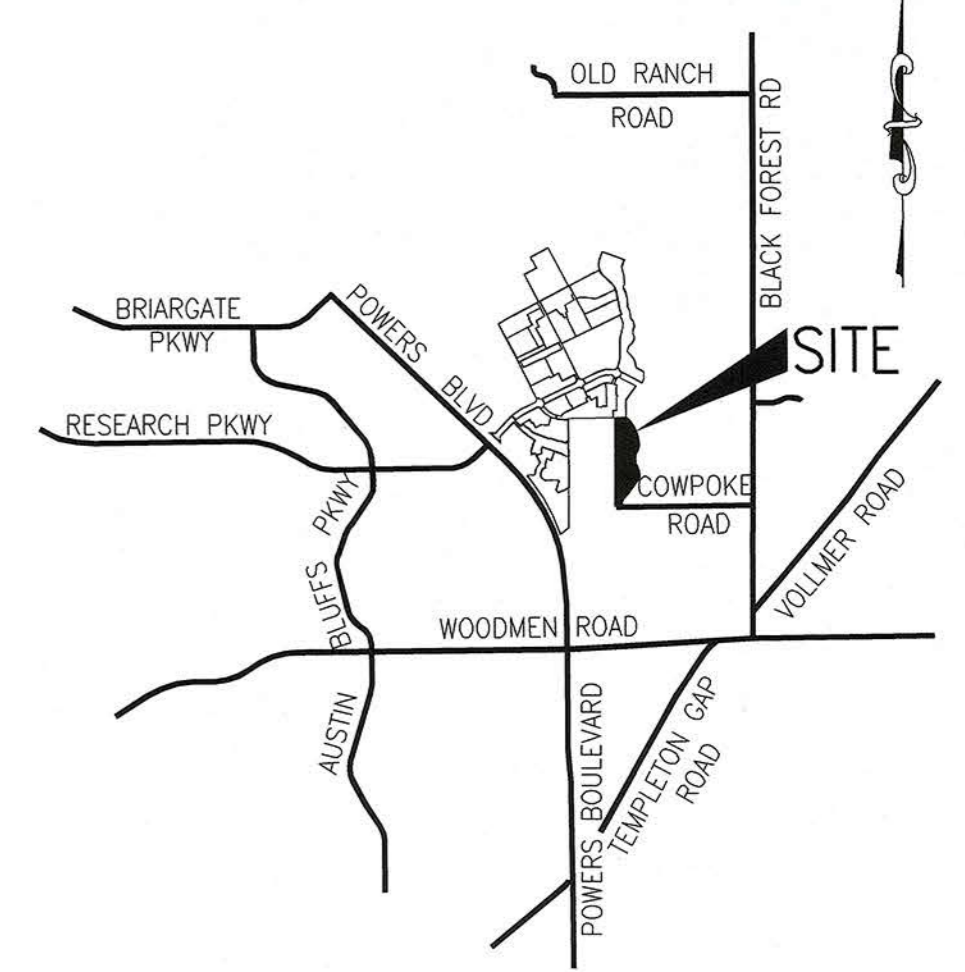
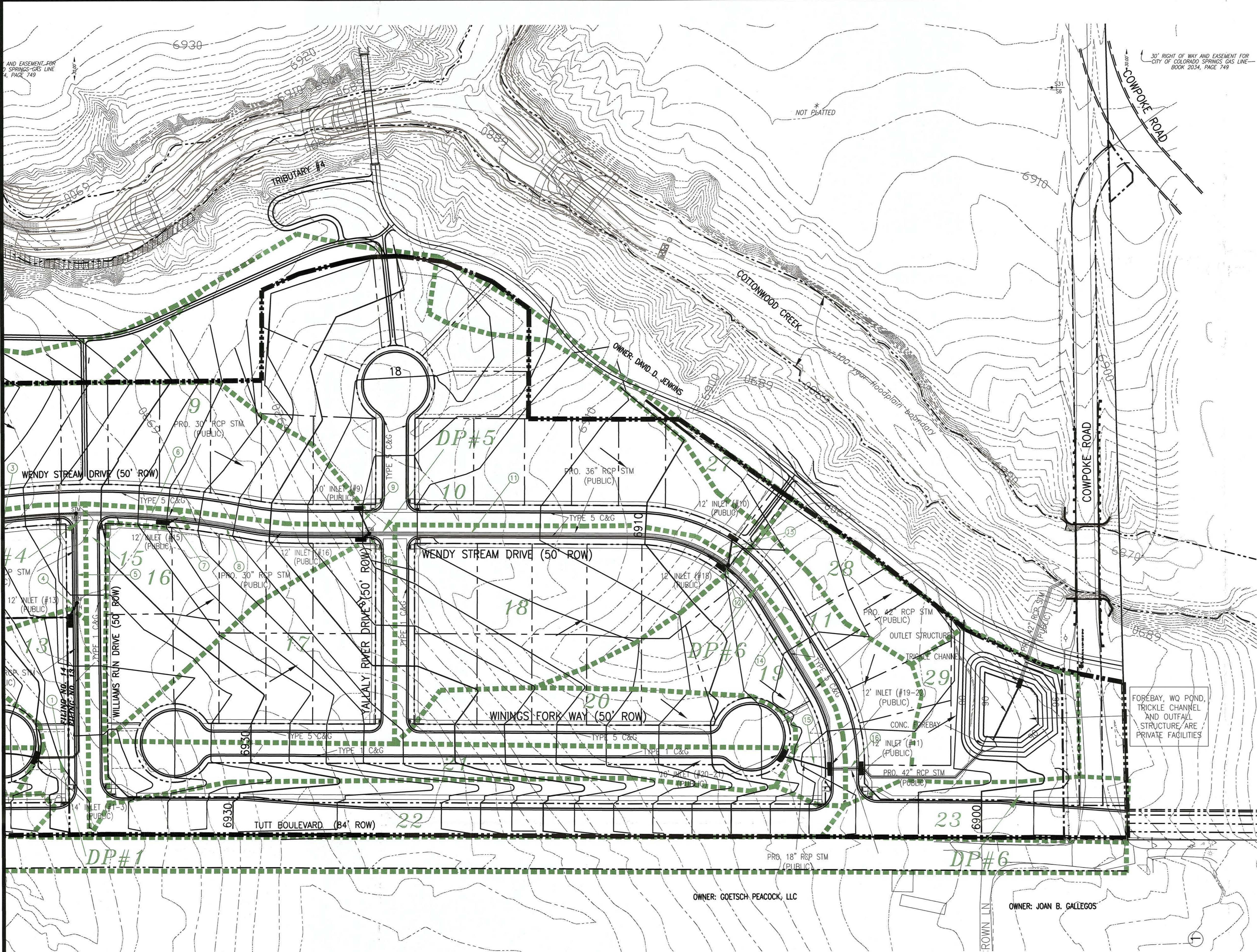
- NOTES**
- THIS IS A CONCEPT GRADING PLAN ONLY - NOT TO BE USED FOR CONSTRUCTION.
  - TOPSOIL TO BE STOCK PILED ON SITE AND REDISTRIBUTED AFTER OVER LOT GRADING IS COMPLETE.

APPROXIMATE FINISHED GRADING,  
SUBJECT TO FINAL DESIGN



**ROCKWELL CONSULTING, Inc.**  
ENGINEERING • SURVEYING  
1955 N. UNION BLVD., SUITE 200  
COLORADO SPRINGS, CO 80909  
(719) 475-2975 • FAX (719) 475-9223

TITLE: WESTCREEK III AT WOLF RANCH (FILING NO. 13&14) DEVELOPED DRAINAGE PLAN  
SCALE: 1"=60' DRAWN BY: NM 17-025  
DATE: 12/11/17 CHECKED BY: KDR JOB NO.



**Vicinity Map**  
NOT TO SCALE

**DEVELOPED DRAINAGE BASIN TABLE**

BASIN	AREA (Ac.)	Q <sub>s</sub> (CFS)	Q <sub>100</sub> (CFS)
1	1.75	4.3	8.7
1A	0.88	2.1	4.6
2	2.11	5.5	11.2
3	1.06	3.4	6.7
4	1.13	3.0	6.4
5	1.20	3.2	6.9
6	0.82	2.5	5.0
7	0.80	2.2	4.5
8	0.32	1.1	2.1
9	1.93	4.6	9.6
10	3.67	8.2	17.3
11	0.66	1.8	3.8
12	1.42	3.5	7.8
13	0.66	1.9	3.8
14	2.62	6.2	13.0
15	0.28	1.3	2.3
16	1.06	2.5	5.4
17	1.32	3.7	7.5
18	1.70	4.2	8.6
19	0.90	2.2	4.7
20	0.75	2.4	4.7
21	1.10	2.6	5.8
22	1.30	3.6	7.3
23	0.60	2.2	4.4
24	2.16	5.1	10.4
25	2.34	5.9	13.1
26	0.42	0.5	1.8
27	0.42	0.9	2.1
28	0.45	1.0	2.2
29	0.79	0.8	3.2

**PIPE FLOWS**

PIPE	Q <sub>100</sub> (CFS)	PIPE SIZE
1A	9.1	18" RCP
1	27.5	24" RCP
2	11.3	18" RCP
3	19.6	18" RCP
4	9.3	18" RCP
5	36.8	30" RCP
6	36.4	30" RCP
7	11.7	18" RCP
8	68.1	30" RCP
9	8.7	18" RCP
10	9.2	18" RCP
11	86.0	36" RCP
12	11.7	18" RCP
13	12.9	18" RCP
14	110.6	42" RCP
15	10.5	18" RCP
16	133.1	42" RCP
17	145.8	42" RCP

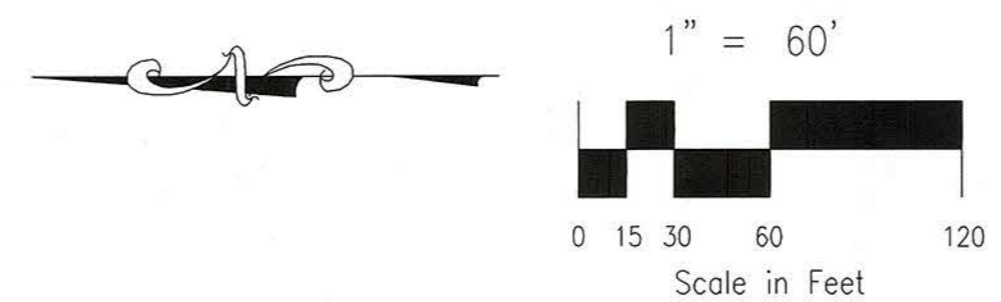
**DEVELOPED DESIGN POINTS**

BASIN	AREA (Ac.)	Q <sub>s</sub> (CFS)	Q <sub>100</sub> (CFS)
DP#1	5.80	13.5	27.5
DP#2	3.15	7.9	16.6
DP#3	4.27	10.9	22.5
DP#4	10.50	23.4	48.4
DP#5	18.08	38.9	80.9
DP#6	24.77	51.9	107.9
DP#7	29.48	61.8	128.4

- LEGEND**
- - - - - EXISTING 2' CONTOUR
  - - - - - EXISTING 10' CONTOUR
  - - - - - PROPOSED 2' CONTOUR
  - - - - - PROPOSED 10' CONTOUR
  - DIRECTION OF FLOW
  - DEVELOPED BASINS
  - DIRECTION OF FLOW
  - PROPOSED INLET & PIPE
  - X DRAINAGE BASIN
  - DP#1 DESIGN POINT
  - ① PIPE NUMBER

- NOTES**
- THIS IS A CONCEPT GRADING PLAN ONLY - NOT TO BE USED FOR CONSTRUCTION.
  - TOPSOIL TO BE STOCK PILED ON SITE AND REDISTRIBUTED AFTER OVER LOT GRADING IS COMPLETE.

APPROXIMATE FINISHED GRADING,  
SUBJECT TO FINAL DESIGN



**ROCKWELL CONSULTING, Inc.**  
ENGINEERING • SURVEYING  
1555 N. UNION BLVD., SUITE 200  
COLORADO SPRINGS, CO 80909  
(719) 475-2575 • FAX (719) 475-9223

TITLE: WESTCREEK III AT WOLF RANCH (FILING NO. 13&14) DEVELOPED DRAINAGE PLAN  
SCALE: 1"=60' DRAWN BY: NM 17-025  
DATE: 12/11/17 CHECKED BY: KDR JOB NO.