

NOTE:
INLETS CAN BE ALTERNATELY SPECIFIED
IN PLACE OF THE CROSSPANS DURING FINAL DESIGN.

TOPOGRAPHIC MAPPING BY
ANALYTICAL SURVEYS
JULY 24, 1982

NOTES:

- 1) All work to conform to City of Colorado Springs Standards.
- 2) Drainage patterns and facilities shown are conceptual only. Final design of facilities to be provided at time of final drainage study.
- 3) "A" and "B" Streets will have 60-foot right-of-ways and 40-foot flowline to flowline distances with 8" vertical curb and gutter.
- 4) Private streets will have 30-foot flowline to flowline distances with 6" vertical curb and gutter.
- 5) All inlets to be curb opening inlets per Colorado Springs specifications.
- 6) Storm sewer to be Class III RCP.

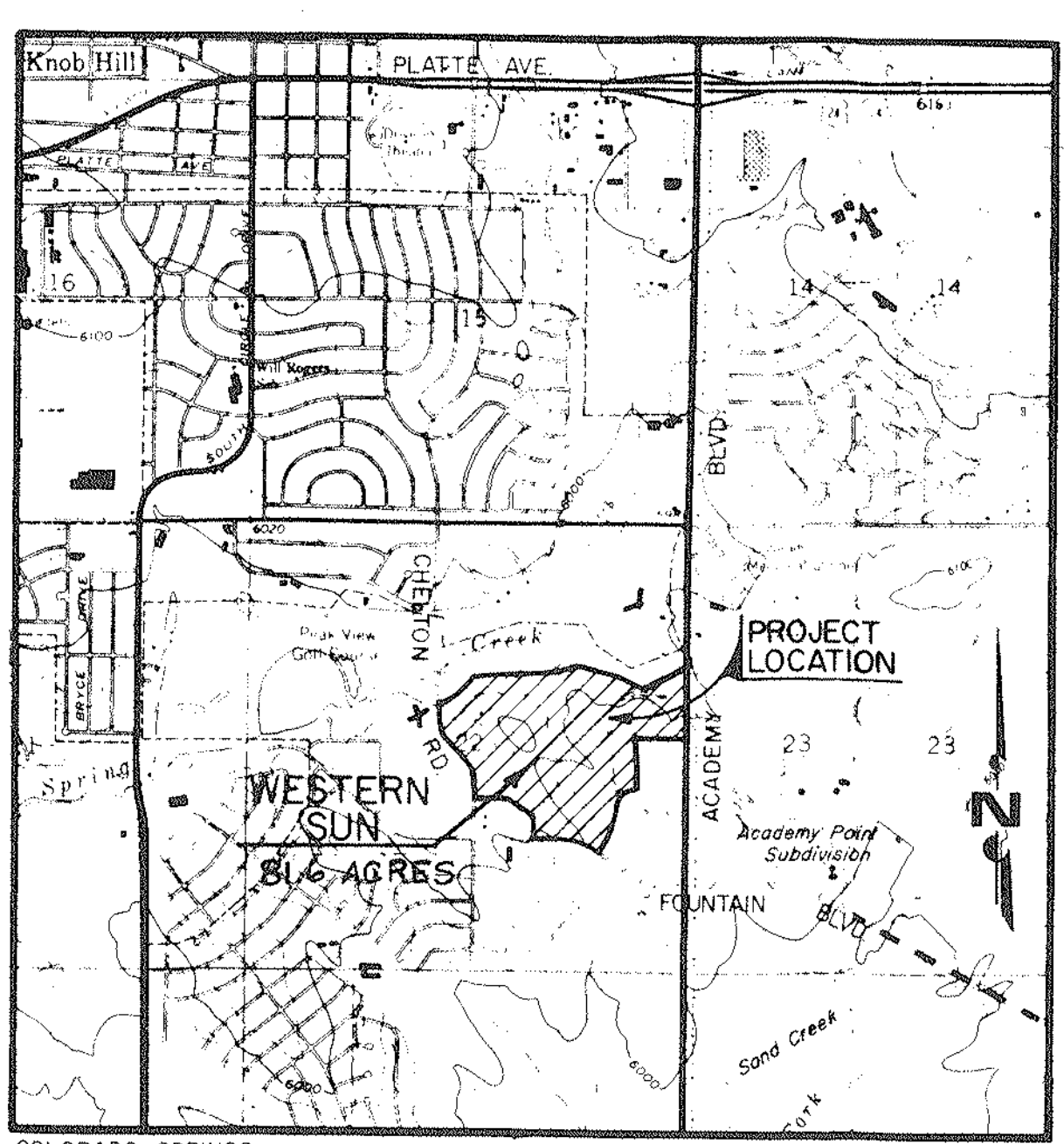
LEGEND

- MAJOR BASIN BOUNDARY
- - - SUB-BASIN BOUNDARY
- (A) MAJOR BASIN DESIGNATION
- (A1) SUB-BASIN DESIGNATION
- 1.50 AREA IN ACRES
- 2.5 DESIGN STORM (5yr.) RUNOFF (c.f.s.)
- 6.7 MAJOR STORM (100yr.) RUNOFF (c.f.s.)
- PROPOSED STORM SEWER WITH INLET & MANHOLE
- CROSS PAN
- - - EXISTING STORM SEWER OR CULVERT
- PROPOSED SWALE
- PROPOSED CURB CUT

Edward J. Bessler
Professional Engineer
No. 10000

PREPARED FOR:
NORTH AMERICAN HOMES, INC.
P.O. BOX 5000A
COLORADO SPRINGS, COLORADO 80906

		MSM CONSULTANTS INC. ENGINEERING ARCHITECTURE SURVEYING PLANNING 370 West 44th Avenue at Fox Street • Denver, Colorado 80216 • (303) 455-7321	
		DESIGNED BY: 	FILE NO: 808907
CHECKED BY: 	SCALE: 1" = 100'	WESTERN SUN	
APPROVED BY: 	DATE: 7/24/82	MASTER DRAINAGE PLAN	
		SHEET NO. 1 OF 1	



VICINITY MAP
SCALE: 1" = 2000'