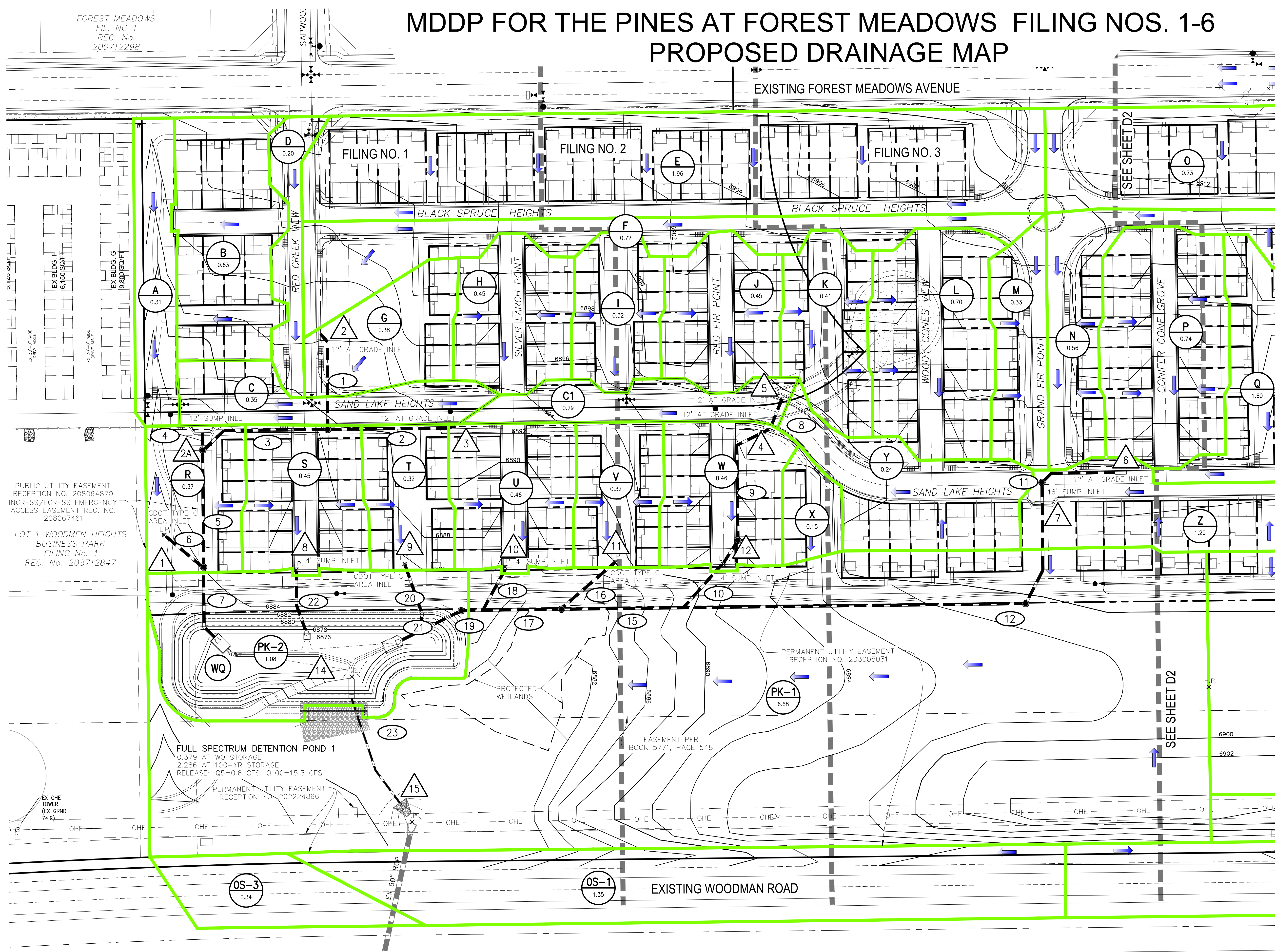


FOREST MEADOWS  
FIL. NO 1  
REC. No.  
206712298

# MDDP FOR THE PINES AT FOREST MEADOWS FILING NOS. 1-6 PROPOSED DRAINAGE MAP

FOR LOCATING  
& MARKING  
GAS,  
ELECTRIC,  
WATER &  
TELEPHONE  
LINES  
FOR BURIED UTILITY INFORMATION  
48 HRS BEFORE YOU DIG  
CALL 1-800-922-1987



PIPE RUN	Q <sub>5</sub>	Q <sub>100</sub>	PIPE SIZE
1	7.6	10.5	24" RCP
2	5.9	9.2	18" RCP
3	13.6	19.7	36" RCP
4	2.5	5.3	18" RCP
5	16.0	25.0	36" RCP
6	3.0	6.5	18" RCP
7	18.5	30.8	36" RCP
8	2.9	5.4	18" RCP
9	5.9	10.7	18" RCP
10	7.5	13.7	24" RCP
11	5.8	9.1	18" RCP
12	15.8	27.4	18" RCP
13	NOT USED		
14	NOT USED		
15	24.0	42.5	36" RCP
16	0.9	1.9	18" RCP
17	24.8	44.2	42" RCP
18	2.0	3.6	18" RCP
19	26.5	47.3	42" RCP
20	0.8	1.9	18" RCP
21	27.1	48.8	42" RCP
22	2.0	3.6	18" RCP
23	0.6	11.6	18" RCP

BASIN	AREA (ACRES)	Q <sub>5</sub>	Q <sub>100</sub>
A	0.31	0.1	0.8
B	0.63	2.7	5.0
C	0.35	1.5	2.8
C1	0.29	1.3	2.3
D	0.20	0.9	1.6
E	1.96	6.8	12.5
F	0.72	2.4	4.6
G	0.38	0.1	0.7
H	0.45	2.0	3.6
I	0.32	0.8	1.8
J	0.45	2.0	3.6
K	0.41	1.8	3.3
L	0.70	3.1	5.7
M	0.33	1.4	2.6
N	0.56	2.5	4.6
O	0.73	3.2	5.8
P	0.74	3.2	5.9
Q	1.60	2.3	5.7
R	0.37	0.5	1.4
S	0.45	2.0	3.6
T	0.32	0.8	1.9
U	0.46	2.0	3.6
V	0.32	0.9	1.9
W	0.46	2.0	3.7
X	0.15	0.4	0.9
Y	0.53	2.3	4.2
Z	0.94	3.6	6.5
PK-1	6.68	3.1	11.9
PK-2	1.08	1.3	4.2
OS-1	1.35	2.5	5.7
OS-3	0.34	0.8	1.7

DESIGN POINT	Q <sub>5</sub>	Q <sub>100</sub>	STRUCTURE
1	3.0	6.5	AREA INLET
2	9.8	18.3	12" SUMP INLET
2A	2.5	5.3	12" AT GRADE INLET
3	6.1	11.4	12" AT GRADE INLET
4, 5	5.9	10.7	12" AT GRADE INLET
6	6.4	13.9	12" AT GRADE INLET
7	10.4	19.0	16" SUMP INLET
8	2.0	3.6	4" SUMP INLET
9	0.8	1.9	AREA INLET
10	2.0	3.6	4" SUMP INLET
11	0.9	1.9	AREA INLET
12	2.0	3.7	4" SUMP INLET
15	6.1	29.4	60" RCP CULVERT

**FULL SPECTRUM DETENTION POND 1**  
0.379 AF WQ STORAGE  
2.286 AF 100-YR STORAGE  
RELEASE: Q5=0.6 CFS, Q100=15.3 CFS

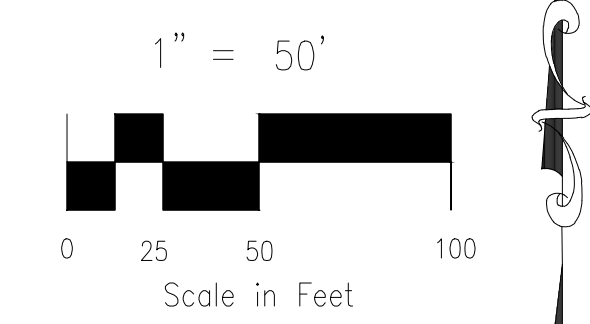
**FSD WQCV POND 1 SUMMARY**  
WQCV EL = 6876.29  
WQCV VOLUME = 0.381 AC-FT  
EURV EL = 6879.37  
EURV VOLUME = 1.495 AC-FT  
100 YR VOLUME = 2.286 AC-FT  
100 YR INFLOW = 91.0 CFS  
100 YR WSE = 6880.92  
EMERGENCY SPILLWAY ELEV = 6882.0  
100 YR SPILLWAY ELEV = 6882.63

NOTE: ALL STORM AND DRAINAGE STRUCTURES ARE PRIVATE AND ARE TO BE PRIVATELY MAINTAINED

20 BOULDER CRESCENT, SUITE 110  
COLORADO SPRINGS, CO 80903  
PHONE: 719.955.5485

THE PINES AT FOREST MEADOWS--FILS NOS. 1-6  
**PROPOSED DRAINAGE MAP**

PROJECT NO. 08-038  
SCALE: HORIZONTAL: 1"=50'  
VERTICAL: N/A  
DATE: 3/23/2017  
SHEET 1 OF 2  
PDM



File: C:\08038A\W889-Brown\Map SHEET 1.dwg Plotstamp: 3/23/2017 1:56 PM

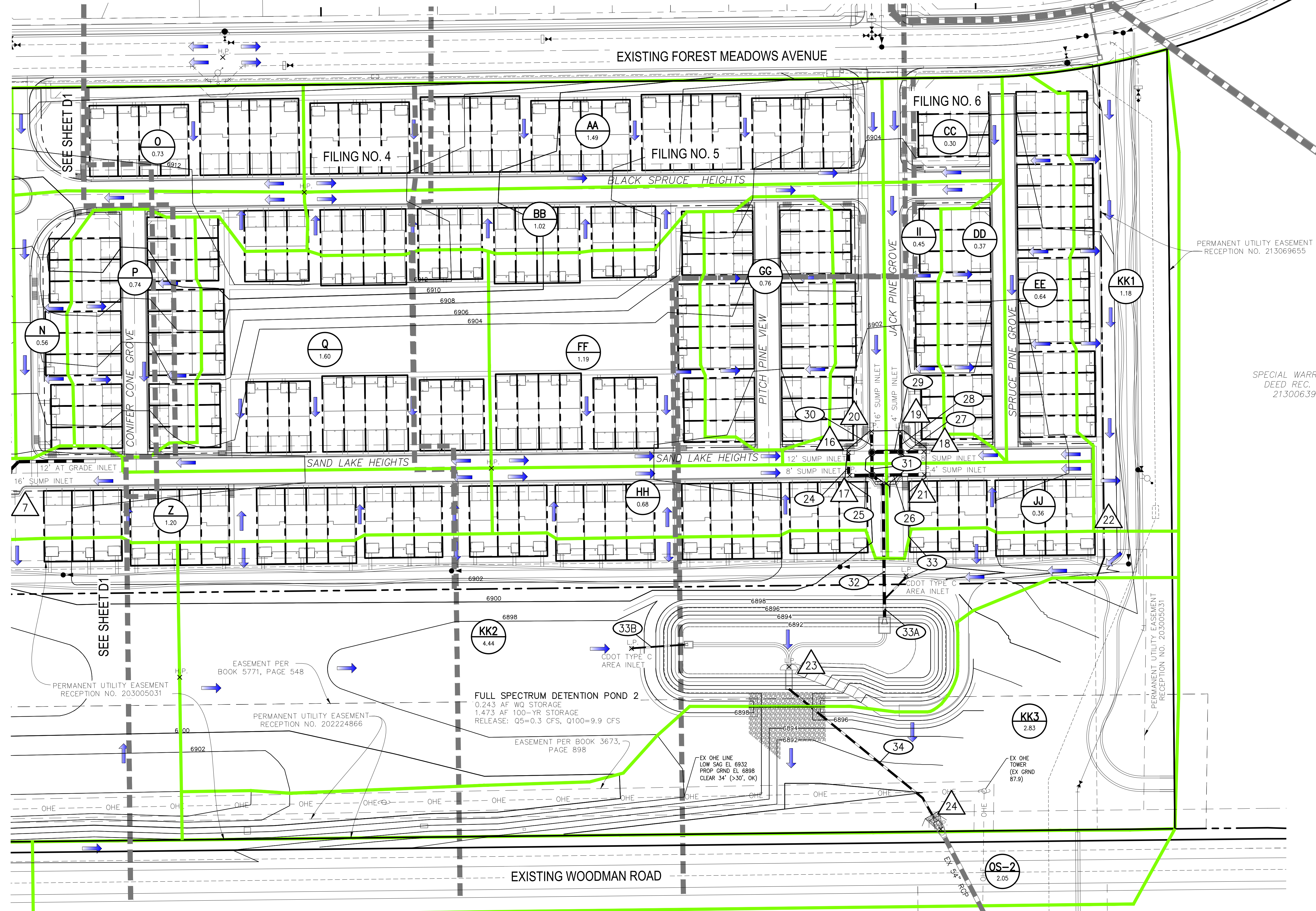
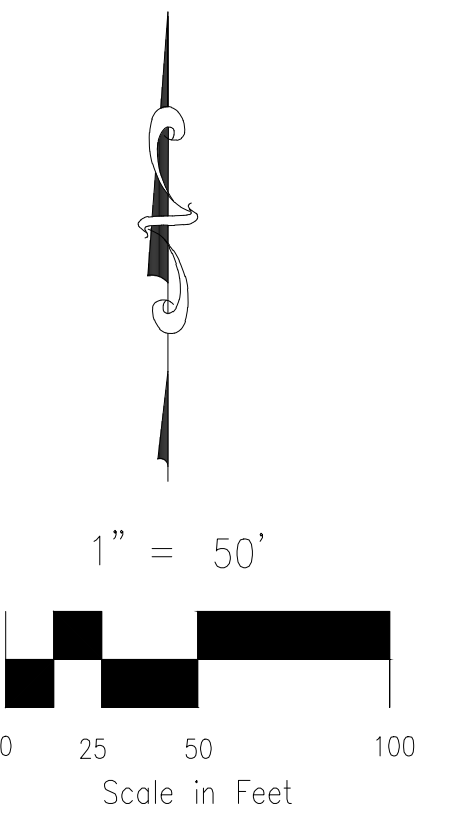
**LEGEND**

- (A) BASIN LABEL AREA
- (1) PIPE DESIGN POINT
- (2) SURFACE DESIGN POINT
- (Blue Arrow) FLOW DIRECTION
- (Green Line) BASIN BOUNDARY
- (Dashed Line) LOT LINE
- (Dotted Line) WETLAND BOUNDARY
- (Dashed Line) FILING BOUNDARY
- (---6920---) EXISTING CONTOUR
- (- - -6920- - -) PROPOSED CONTOUR
- (---) STORM SEWER PIPE
- (---) CROSSSPAN
- (---) INLET
- (WQ) WATER QUALITY FEATURE/FACILITY
- (H.P.) HIGH POINT
- (L.P.) LOW POINT

# MDDP FOR THE PINES AT FOREST MEADOWS FILING NOS. 1-6 PROPOSED DRAINAGE MAP

FOREST MEADOWS  
FIL. NO. 8  
REC. No. 215713681

FOR LOCATING  
& MARKING  
GAS,  
ELECTRIC,  
WATER &  
TELEPHONE  
LINES  
FOR BURIED UTILITY INFORMATION  
48 HRS BEFORE YOU DIG  
CALL 1-800-922-1987



PIPE RUN	Q <sub>5</sub>	Q <sub>100</sub>	PIPE SIZE
24	5.6	10.7	24" RCP
25	7.8	14.8	24" RCP
26	1.6	2.9	18" RCP
27	4.2	7.6	18" RCP
28	2.4	4.7	18" RCP
29	6.4	11.9	24" RCP
30	9.8	18.1	36" RCP
31	15.8	29.2	36" RCP
32	24.7	46.1	36" RCP
33	1.3	3.8	18" RCP
33A	25.2	48.5	48" RCP
33B	3.1	11.8	24" RCP
34	0.4	0.8	18" RCP

BASIN	AREA (ACRES)	Q <sub>5</sub>	Q <sub>100</sub>
N	0.56	2.5	4.6
O	0.73	3.2	5.8
P	0.74	3.2	5.9
Q	1.60	2.3	5.7
Z	0.94	3.6	6.5
AA	1.49	5.8	10.6
BB	1.02	4.0	7.3
CC	0.30	1.1	2.2
DD	0.37	1.6	3.0
EE	0.64	2.7	5.0
FF	1.19	3.3	6.6
GG	0.76	3.4	6.1
HH	0.68	2.8	5.1
II	0.45	1.6	3.1
JJ	0.36	1.6	2.9
KK1	1.18	1.3	3.8
KK2	4.44	3.1	11.8
KK3	2.83	1.1	7.7
OS-2	2.05	3.4	7.8

DESIGN POINT	Q <sub>5</sub>	Q <sub>100</sub>	STRUCTURE
7	10.4	19.0	16" SUMP INLET
16	5.6	10.7	12" SUMP INLET
17	2.8	5.1	8" SUMP INLET
18	4.2	7.6	8" SUMP INLET
19	2.4	4.7	4" SUMP INLET
20	9.8	18.1	16" SUMP INLET
21	1.6	2.9	4" SUMP INLET
22	1.3	3.8	AREA INLET
23	26.0	55.9	TOTAL POND 2 INFLOW
24	4.7	22.0	54" RCP CULVERT

**FULL SPECTRUM DETENTION POND 2**  
0.243 AF WQ STORAGE  
1.473 AF 100-YR STORAGE  
RELEASE: Q<sub>5</sub>=0.3 CFS, Q<sub>100</sub>=9.9 CFS

**FSD WQCV POND 2 SUMMARY**  
WQCV EL = 6891.47  
WQCV VOLUME = 0.243 AC-FT  
EURV EL = 6893.46  
EURV VOLUME = 0.911 AC-FT  
100 YR VOLUME = 1.517 AC-FT  
100 YR INFLOW = 55.9 CFS  
100 YR WSE = 6894.81  
EMERGENCY SPILLWAY ELEV = 6896.00  
100 YR SPILLWAY ELEV = 6896.50

NOTE: ALL STORM AND DRAINAGE STRUCTURES ARE PRIVATE AND ARE TO BE PRIVATELY MAINTAINED

**LEGEND**

- BASIN LABEL (AREA)
- PIPE DESIGN POINT
- SURFACE DESIGN POINT
- FLOW DIRECTION
- BASIN BOUNDARY
- LOT LINE
- FILING BOUNDARY
- EXISTING CONTOUR
- PROPOSED CONTOUR
- STORM SEWER PIPE
- CROSSSPAN
- INLET
- WATER QUALITY FEATURE/FACILITY
- HIGH POINT
- LOW POINT

**M&S CIVIL CONSULTANTS, INC.**  
20 BOULDER CRESCENT, SUITE 110  
COLORADO SPRINGS, CO 80903  
PHONE: 719.955.5485

**THE PINES AT FOREST MEADOWS--FILS NOS. 1-6**  
**PROPOSED DRAINAGE MAP**

PROJECT NO. 08-038  
SCALE: HORIZONTAL: 1"=50' VERTICAL: N/A  
DATE: 3/23/2017  
DESIGNED BY: VAS  
DRAWN BY: CMN  
CHECKED BY: VAS  
SHEET 2 OF 2  
PDM

File: C:\08038A\WBP-Brown\Map\_Sheet\_2 (Escr).dwg PlotStamp: 3/23/2017 1:41 PM