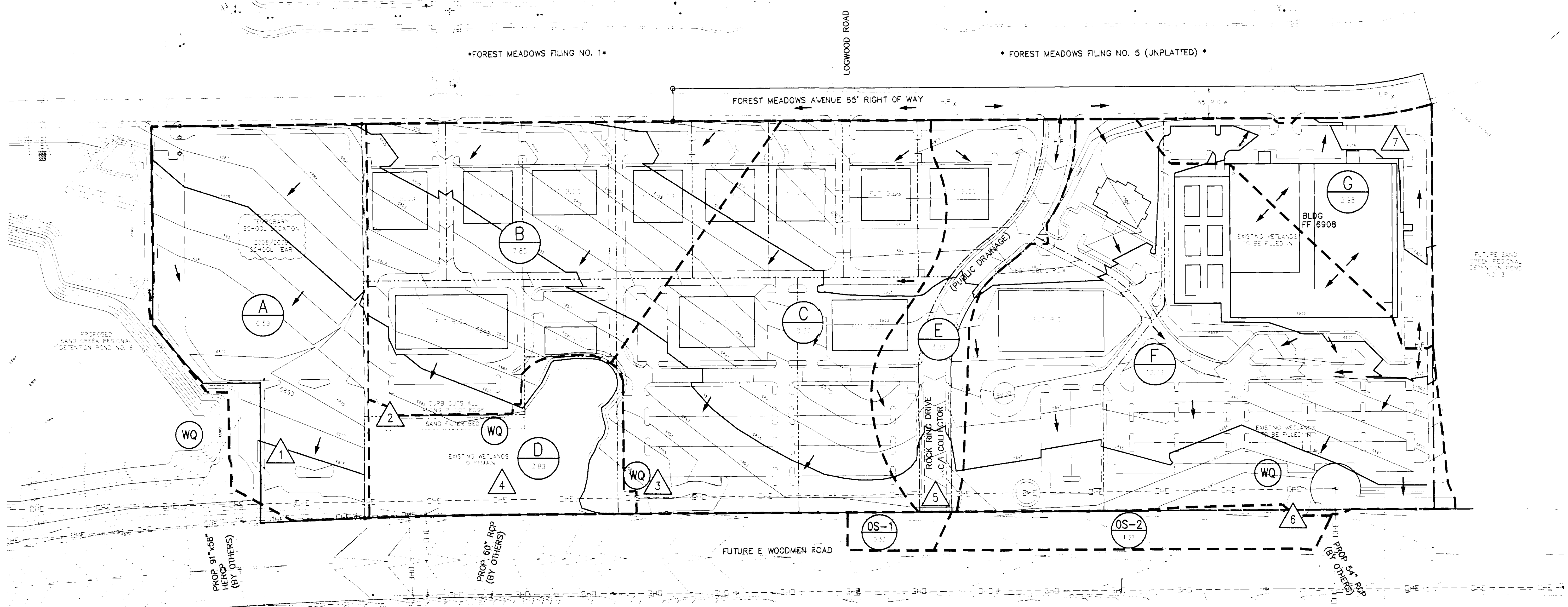


WOODMEN HEIGHTS BUSINESS PARK MASTER DEVELOPMENT DRAINAGE PLAN DRAINAGE MAP



BASIN SUMMARY

BASIN	AREA (Acres)	Qs (c.f.s.)	Q100 (c.f.s.)
A	6.59	28.2	50.3
B	7.85	33.1	59.0
C	8.37	35.6	63.4
D	2.89	14.3	3.3
E	3.32	14.3	27.0
F	12.73	36.8	65.6
G	0.98	11.8	21.1
OS-1	0.33	1.5	2.8
OS-2	1.37	6.1	11.5

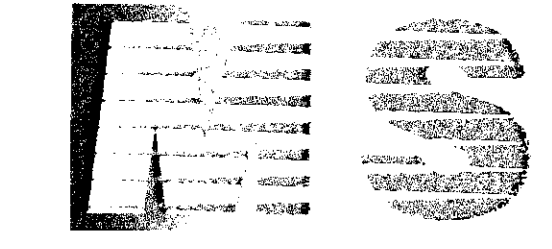
DESIGN POINT SUMMARY

Design Point	Qs (c.f.s.)	Q100 (c.f.s.)	COMMENTS
1	28.2	50.3	SLUMP INLET(S) REQ'D FOR TO FINALIZE
2	33.1	59.0	CURB CUTS ALONG PARKING LOT EDGE
3	35.6	63.4	SLUMP INLET(S) REQ'D FOR TO FINALIZE
4	47.8	86.0	ROUTED TO PROP 60' CUTFALL PIPE
5	15.7	29.6	CURB CUT TO OPEN CHANNEL
6	68.6	124.1	ROUTED TO PROP 34' CUTFALL PIPE
7	11.8	21.1	ROUTED TO FUTURE DET POND NO. 3

LEGEND

- BASIN
- DESIGN POINT
- DESIGN POINT
- FLOW DIRECTION
- BASIN BOUNDARY
- LOT LINE
- SAND
- PROPOSED CONTOUR
- STORM SEWER PIPE
- CULVERT
- WATER QUALITY FEATURE SYMBOL





15 NORTH NEVADA AVE
COLORADO SPRINGS, CO 80903
(719) 955-5485, FAX (719) 444-8427

**WOODMEN HEIGHTS BUSINESS PARK
DRAINAGE MAP**

PROJECT NO: 08-011 | FILE: WOODMEN FILING DRAINAGE PLAN.DWG
DESIGNED BY: BES | SCALE: | DATE: 01/11/08
DRAWN BY: BES | PLOT ZOOM: 100%
CHECKED BY: LAS

SHEET 1 OF 1 D1