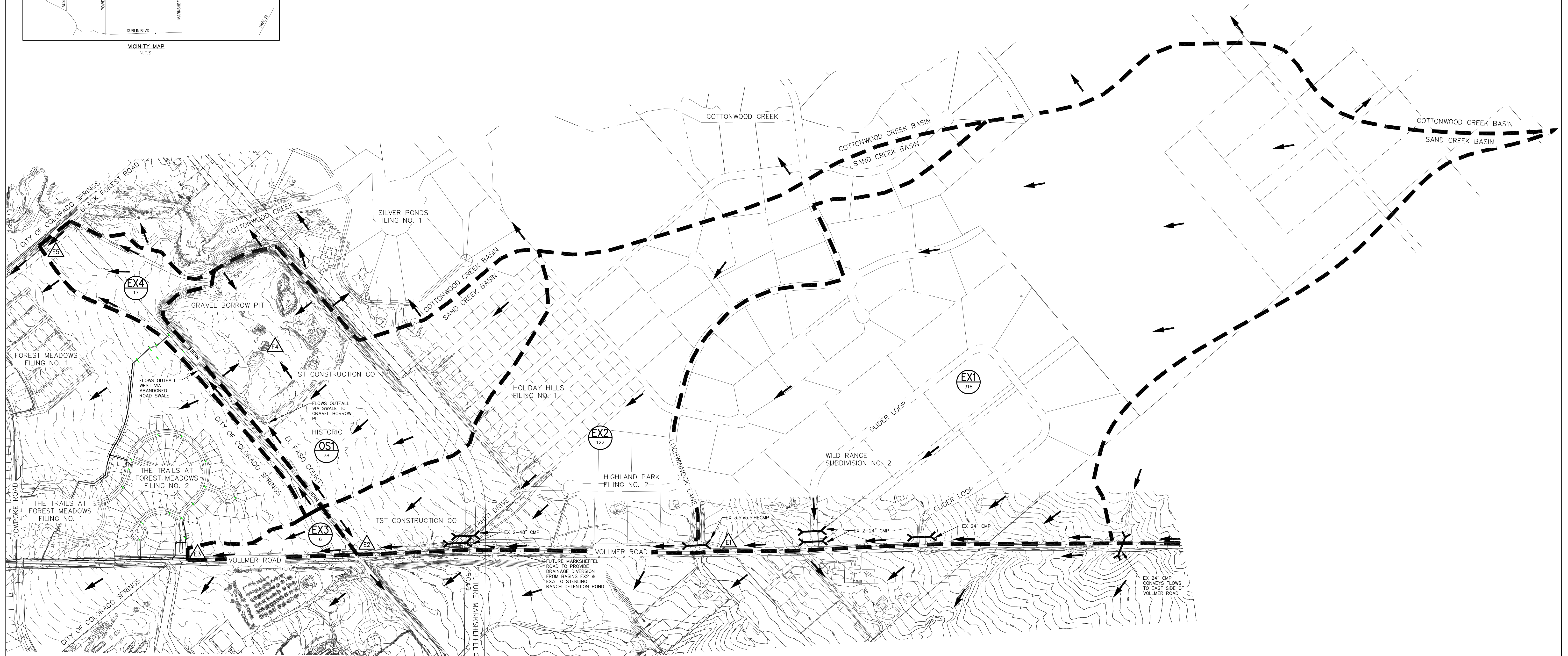


VICINITY MAP  
N.T.S.

| HISTORIC BASIN SUMMARY |              |                      |                        |
|------------------------|--------------|----------------------|------------------------|
| BASIN                  | AREA (ACRES) | Q <sub>5</sub> (CFS) | Q <sub>100</sub> (CFS) |
| EX1                    | 318          | 66.6                 | 300.7                  |
| EX2                    | 122          | 23.5                 | 106.1                  |
| EX3                    | 6            | 1.8                  | 8.0                    |
| OS1                    | 78           | 34.4                 | 84.1                   |
| EX5                    | 17           | 5.1                  | 22.9                   |

| HISTORIC SURFACE ROUTING SUMMARY |                                  |                      |                        |
|----------------------------------|----------------------------------|----------------------|------------------------|
| DESIGN POINT                     | CONTRIBUTING BASIN DESIGN POINTS | Q <sub>5</sub> (CFS) | Q <sub>100</sub> (CFS) |
| E1                               | EX1                              | 66.6                 | 300.7                  |
| E2                               | EX2 & DP E1                      | 84.7                 | 382.6                  |
| E3                               | EX3 & DP E2                      | 85.8                 | 387.8                  |
| E4                               | OS1                              | 34.4                 | 84.1                   |
| E5                               | EX4                              | 5.1                  | 22.9                   |



LEGEND



EXISTING MDDP BASIN  
ACREAGE



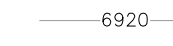
EXISTING FLOW RELEASE POINT



FLOW DIRECTION



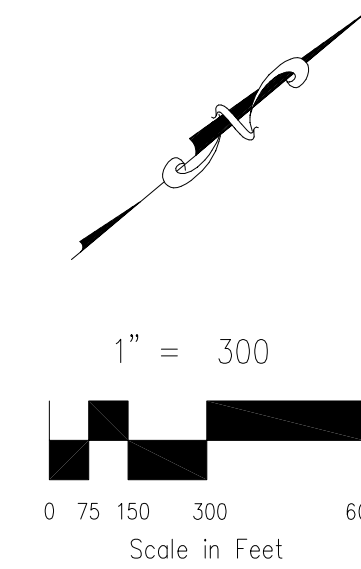
BASIN BOUNDARY



EXISTING CONTOUR



CULVERT PIPE

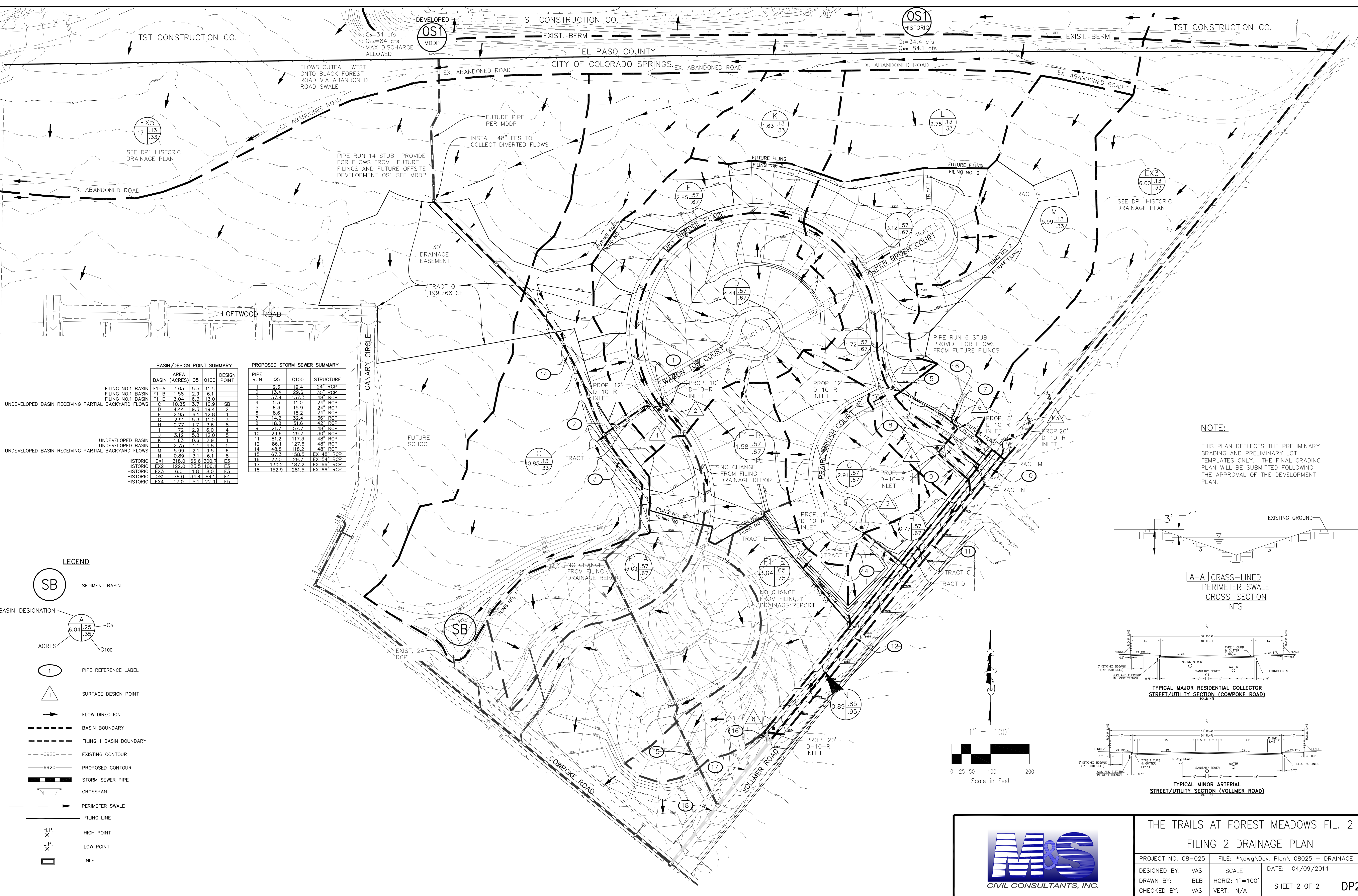


CIVIL CONSULTANTS, INC.  
E. PIKES PEAK AVE., STE 306  
COLORADO SPRINGS, CO 80901  
(719) 235-5249, FAX (719) 444-8427

THE TRAILS AT FOREST MEADOWS FIL. NO. 2

HISTORIC -- DRAINAGE MAP

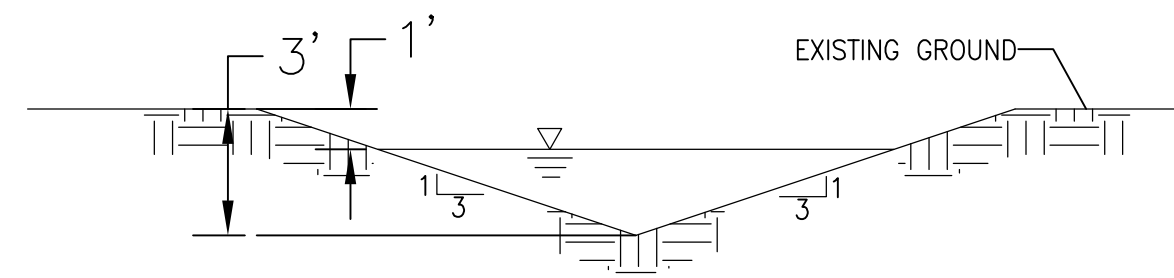
|                    |                                     |
|--------------------|-------------------------------------|
| PROJECT NO. 08-025 | FILE: *dwg\Dev Plan\08-025-HISTORIC |
| DESIGNED BY: ET    | SCALE                               |
| DRAWN BY: ET       | HORIZ: 1"=300'                      |
| CHECKED BY:        | VERT: N/A                           |
| DATE: 05/01/14     | SHEET 1 OF 2                        |
|                    | DP1                                 |



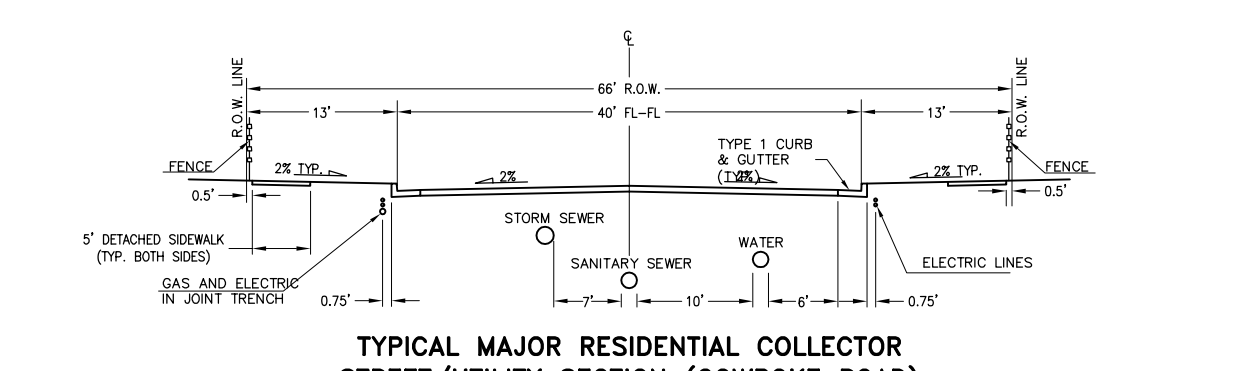
| BASIN/DESIGN POINT SUMMARY                           |              |      |       |              | PROPOSED STORM SEWER SUMMARY |       |       |            |
|--|--------------|------|-------|--------------|------------------------------|-------|-------|------------|
| BASIN  | AREA (ACRES) | Q5   | Q100  | DESIGN POINT | PIPE RUN                     | Q5    | Q100  | STRUCTURE  |
| FILING NO.1 BASIN F1-A                               | 3.03         | 5.5  | 11.5  |              | 1                            | 9.3   | 19.4  | 24" RCP    |
| FILING NO.1 BASIN F1-B                               | 1.58         | 2.9  | 6.1   |              | 2                            | 13.4  | 29.6  | 30" RCP    |
| FILING NO.1 BASIN F1-E                               | 3.04         | 6.3  | 13.0  |              | 3                            | 57.4  | 137.3 | 48" RCP    |
| UNDEVELOPED BASIN RECEIVING PARTIAL BACKYARD FLOWS C | 10.85        | 3.7  | 16.9  | SB           | 4                            | 5.3   | 11.0  | 24" RCP    |
| D  | 4.44         | 9.3  | 19.4  | 2            | 5                            | 6.3   | 15.9  | 24" RCP    |
| E  | 2.95         | 6.1  | 12.8  | 1            | 6                            | 8.6   | 18.2  | 24" RCP    |
| F  | 2.91         | 5.3  | 11.0  | 3            | 7                            | 14.2  | 32.4  | 36" RCP    |
| G  | 0.77         | 1.7  | 3.6   | 8            | 8                            | 16.8  | 51.6  | 42" RCP    |
| H  | 1.72         | 2.9  | 6.0   | 4            | 9                            | 21.7  | 57.7  | 48" RCP    |
| I  | 3.12         | 5.8  | 12.0  | 5            | 10                           | 29.6  | 29.7  | 30" RCP    |
| J  | 1.63         | 0.6  | 2.9   | 1            | 11                           | 81.2  | 117.3 | 48" RCP    |
| K  | 2.75         | 1.1  | 4.8   | 5            | 12                           | 86.1  | 122.6 | 48" RCP    |
| L  | 5.99         | 2.1  | 9.5   | 6            | 14                           | 48.8  | 118.2 | 48" RCP    |
| M  | 0.89         | 3.1  | 6.1   | 8            | 15                           | 67.3  | 158.5 | EX 48" RCP |
| N  | 0.89         | 3.1  | 6.1   | 8            | 16                           | 22.0  | 29.7  | EX 54" RCP |
| HISTORIC EX1   | 318.0        | 66.6 | 300.7 | E3           | 17                           | 130.2 | 187.2 | EX 86" RCP |
| HISTORIC EX2   | 122.0        | 23.3 | 106.1 | E3           | 18                           | 152.9 | 281.5 | EX 66" RCP |
| HISTORIC EX3   | 6.0          | 1.8  | 8.0   | E3           |                              |       |       |            |
| HISTORIC OS1   | 78.0         | 34.4 | 84.1  | F4           |                              |       |       |            |
| HISTORIC EX4   | 17.0         | 5.1  | 22.9  | F5           |                              |       |       |            |

- LEGEND**
- SEDIMENT BASIN
  - BASIN DESIGNATION
  - PIPE REFERENCE LABEL
  - SURFACE DESIGN POINT
  - FLOW DIRECTION
  - BASIN BOUNDARY
  - FILING 1 BASIN BOUNDARY
  - EXISTING CONTOUR
  - PROPOSED CONTOUR
  - STORM SEWER PIPE
  - CROSSSPAN
  - PERIMETER SWALE
  - FILING LINE
  - HIGH POINT
  - LOW POINT
  - INLET

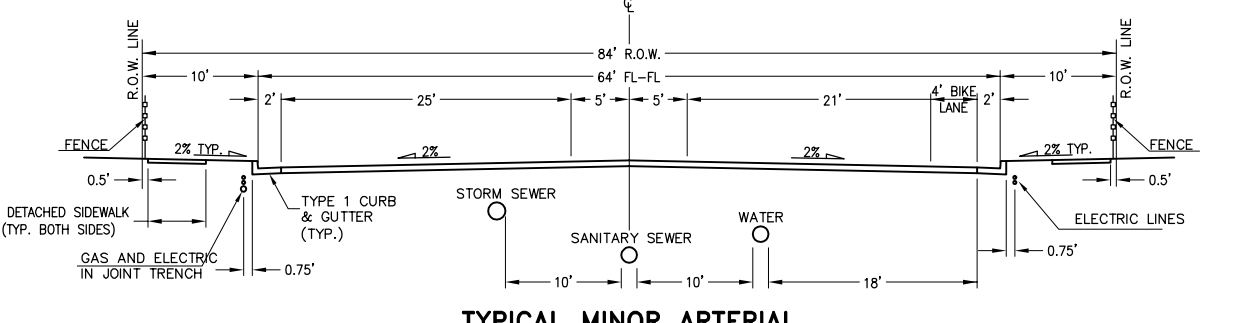
**NOTE:**  
THIS PLAN REFLECTS THE PRELIMINARY GRADING AND PRELIMINARY LOT TEMPLATES ONLY. THE FINAL GRADING PLAN WILL BE SUBMITTED FOLLOWING THE APPROVAL OF THE DEVELOPMENT PLAN.



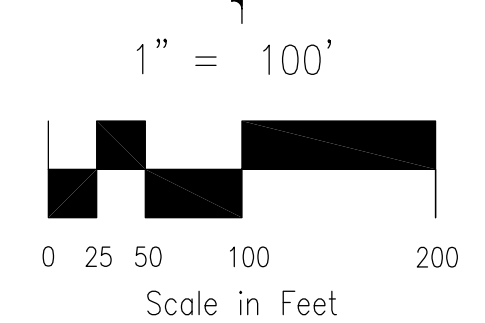
**A-A GRASS-LINED PERIMETER SWALE CROSS-SECTION NTS**



**TYPICAL MAJOR RESIDENTIAL COLLECTOR STREET/UTILITY SECTION (COWPOKE ROAD) SCALE: NTS**



**TYPICAL MINOR ARTERIAL STREET/UTILITY SECTION (VOLLMER ROAD) SCALE: NTS**



**THE TRAILS AT FOREST MEADOWS FIL. 2**

**FILING 2 DRAINAGE PLAN**

|                    |                                       |
|--------------------|---------------------------------------|
| PROJECT NO. 08-025 | FILE: *dwg\Dev. Plan\08025 - DRAINAGE |
| DESIGNED BY: VAS   | SCALE                                 |
| DRAWN BY: BLB      | HORIZ: 1"=100'                        |
| CHECKED BY: VAS    | VERT: N/A                             |
| DATE: 04/09/2014   | SHEET 2 OF 2                          |
|                    | DP2                                   |