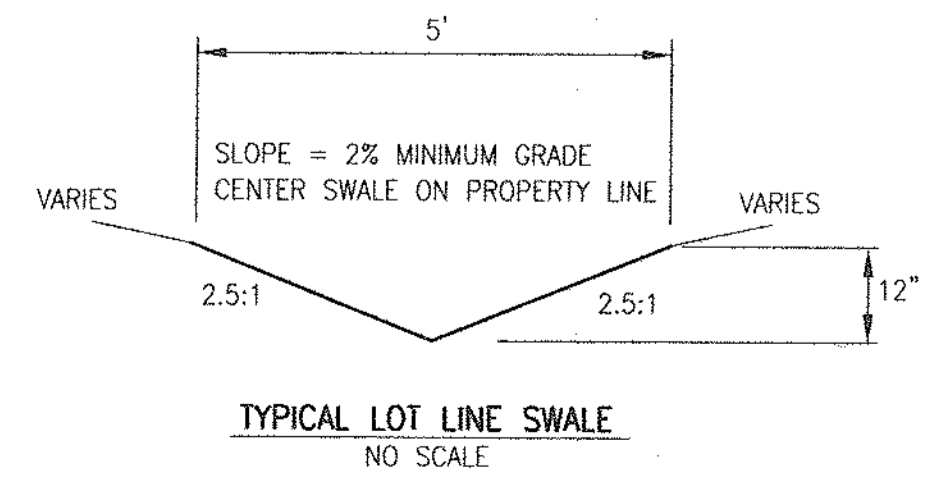
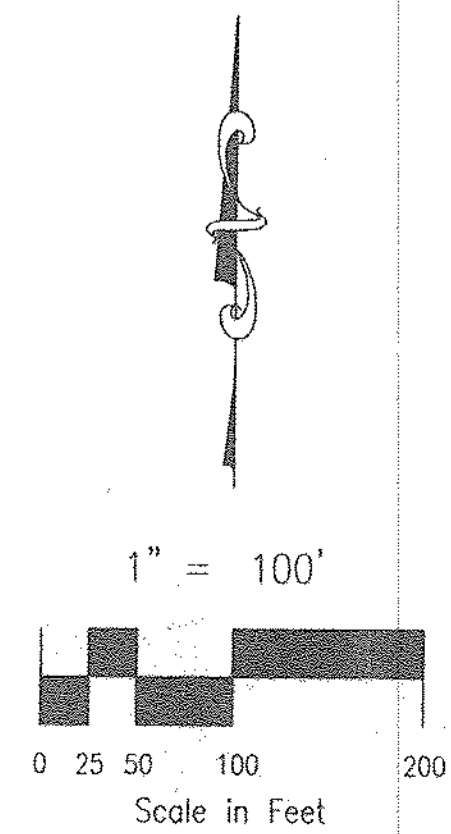


- LEGEND**
- EXISTING 2' CONTOURS
  - DEVELOPED BASINS
  - PROPOSED 2' CONTOURS
  - DIRECTION OF FLOW
  - PROPOSED INLET & PIPE
  - DRAINAGE BASIN
  - DESIGN POINT

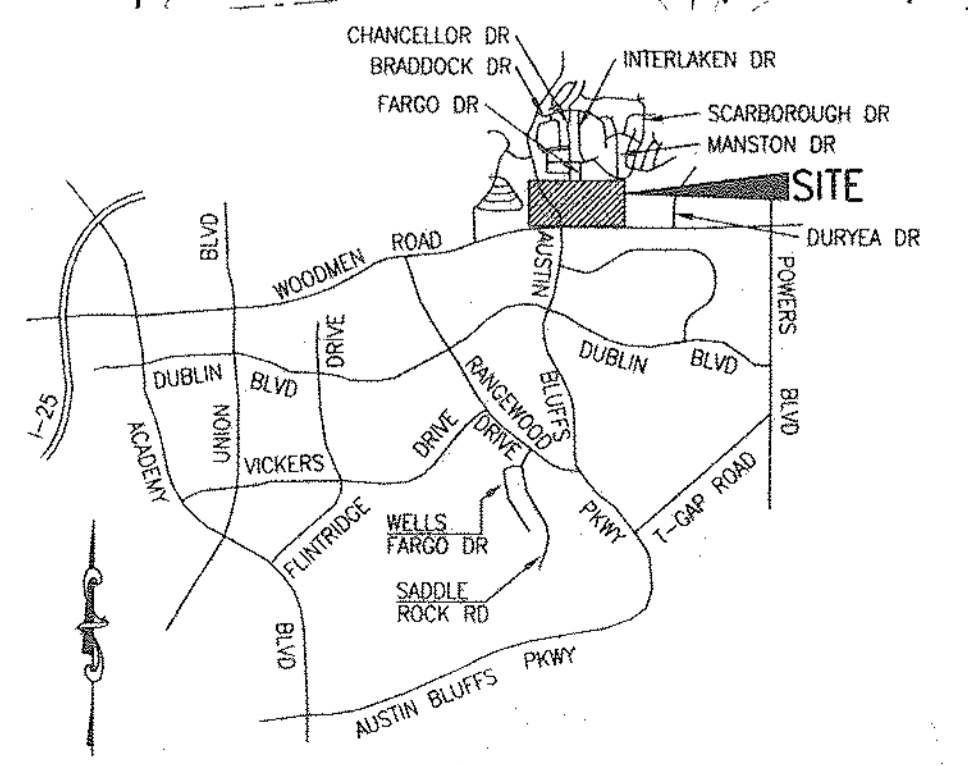


**DEVELOPED DRAINAGE BASIN TABLE**

BASIN	AREA (Ac.)	Q <sub>5</sub> (CFS)	Q <sub>100</sub> (CFS)
I	2.18	4.5	9.8
IIA	5.35	12.8	26.6
IIB	1.71	5.0	10.7
III	1.34	3.7	7.8
IV	4.43	10.6	23.3
V	5.83	10.3	22.9
VI	2.23	6.3	13.3
VII	3.26	6.9	14.9
VIII	0.57	1.7	3.6
IX	1.35	4.8	9.4
X	1.78	3.9	7.6
XI-A	3.36	6.1	13.6
XI-B	9.15	9.6	24.9
XI-C	1.55	2.0	5.0
XII	10.76	11.0	28.2
XIII	3.69	6.1	12.8
XIV	7.18	14.1	26.6
XV	9.54	8.8	22.7
XVI	4.52	17.4	31.0
XVII	3.04	7.1	15.8
XVIII	8.62	13.5	29.8
XIX	4.11	10.6	22.7
XX	0.67	2.0	4.3
XXI	1.12	3.2	7.0

**DESIGN POINT TABLE**

BASIN	AREA (Ac.)	Q <sub>5</sub> (CFS)	Q <sub>100</sub> (CFS)
DP#1	10.26	20.6	44.8
DP#2	16.32	34.9	74.5
DP#3	17.62	33.7	73.1



**Vicinity Map**  
NOT TO SCALE

**EXHIBIT 2**  
FILE: 00094CD.DWG 6/30/03

**WOODMEN POINTE FILING NO. 1**  
**DEVELOPED DRAINAGE PLAN**

TITLE : \_\_\_\_\_  
SCALE : 1" = 100' DRAWN BY : KDR 00-094  
DATE : 6/30/03 CHECKED BY : KDR JOB NO. \_\_\_\_\_