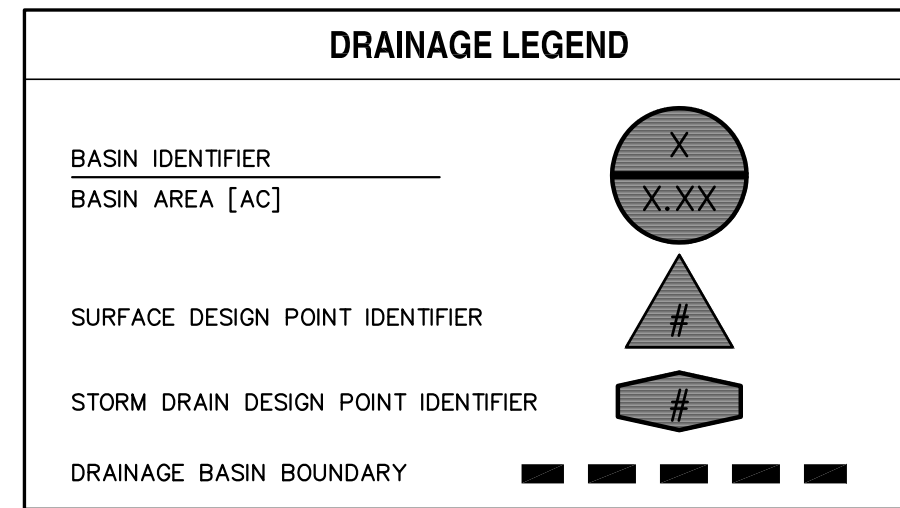


DESIGN POINT			
DESIGN POINT	Q ₅ [CFS]	Q ₁₀₀ [CFS]	DESCRIPTION
1	2	5	(P) 5' TYPE R SUMP INLET
2	2	4	(P) 5' TYPE R SUMP INLET
3	1	3	(P) 5' TYPE R SUMP INLET
4	7	14	(P) 10' TYPE R SUMP INLET
5	1	2	(P) 5' TYPE R SUMP INLET
6	4	10	(P) 10' TYPE R SUMP INLET
7	4	9	(P) 10' TYPE R SUMP INLET
8	7	13	(P) 10' TYPE R SUMP INLET
9	2	5	(P) 5' TYPE R SUMP INLET
10	3	7	(P) 5' TYPE R SUMP INLET
11	3	7	(P) 5' TYPE R SUMP INLET
12	0.4	3	(P) SHEET FLOW INTO POND A
13	1	6	(P) SHEET FLOW TO ADJACENT PROPERTY
14	0.2	2	(P) SHEET FLOW TO ADJACENT PROPERTY
20	1	5	(P) 10' TYPE R AT-GRADE INLET
21	1	3	(P) 10' TYPE R AT-GRADE INLET
22	0.6	2	(P) FLOW TO WOODMEN ROAD
23	1	4	(P) FLOW AT TEMP. END OF CENTER RIDGE DRIVE
24	2	5	(P) FLOW AT TEMP. END OF CENTER RIDGE DRIVE
25	1.3	13	(P) COMBINED FLOW TO ADJACENT PROPERTY
26	3	8	(E) 4' D-10R SUMP INLET
27	1	12	(E) 8' D-10R SUMP INLET
28	1	2	(P) 5' TYPE R AT-GRADE INLET
29	2	2	(P) 5' TYPE R AT-GRADE INLET
30	0.1	1	(P) SHEET FLOW INTO POND B
A	2	3	TOTAL FLOW EAST TO ADJACENT PROPERTY
SD1	9	26	(P) 30" RCP - PRIVATE
SD2	10	28	(P) 30" RCP - PRIVATE
SD3	11	30	(P) 30" RCP - PRIVATE
SD4	18	43	(P) 36" RCP - PRIVATE
SD5	18	44	(P) 36" RCP - PRIVATE
SD6	21	52	(P) 36" RCP - PRIVATE
SD7	4	9	(P) 18" RCP - PRIVATE
SD8	10	20	(P) 18" RCP - PRIVATE
SD9	29	68	(P) 36" RCP - PRIVATE
SD10	2	4	(P) 18" RCP - PRIVATE
SD11	4	9	(P) 24" RCP - PRIVATE
SD12	7	16	(P) 24" RCP - PRIVATE
SD20	6	8	(E) 18" RCP - PUBLIC
SD21	6	17	(P) 24" RCP - PUBLIC
SD22	7	20	(P) 24" RCP - PUBLIC
SD23	9	22	(P) 30" RCP - PRIVATE
SD24	1	2	(P) 18" RCP - PUBLIC
SD25	2	3	(P) 18" RCP - PUBLIC

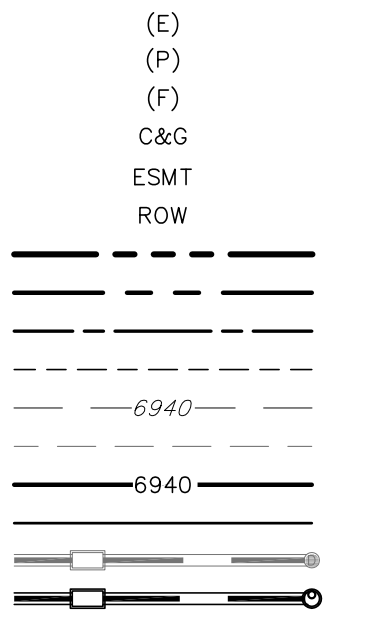
DRAINAGE BASIN		
BASIN	Q ₅ [CFS]	Q ₁₀₀ [CFS]
A	2	5
B	1	3
C	1	4
D	1	14
E	1	4
F	1	10
G	4	9
H	7	13
I	2	5
J	3	7
K	3	7
L	0.4	1
M	1	6
N	0.2	2
O	1	2
P	1	1
Q	0.1	1
OS-1	1	5
OS-2	1	3
OS-3	1	4
OS-4	0.8	2
OS-5	1	4
OS-6	1	5
OS-K	3	6
OS-L	1	12

EDB WQ/FULL SPECTRUM POND A			
DESCRIPTION	5 YR	100 YR	UNITS
INFLOW	36	85	[CFS]
OUTFLOW	0.5	6	[CFS]
WATER SURFACE ELEV.	6,949.3	6,952.5	[FT]
OVERFLOW WEIR ELEV.	6,953.0	6,953.0	[FT]
STORAGE VOLUME	0.97	2.16	[AF]

SFB WQ/FULL SPECTRUM POND B			
DESCRIPTION	5 YR	100 YR	UNITS
INFLOW	2	4	[CFS]
OUTFLOW	0.1	0.1	[CFS]
WATER SURFACE ELEV.	6,960.4	6,961.0	[FT]
OVERFLOW WEIR ELEV.	6,961.9	6,961.9	[FT]
STORAGE VOLUME	0.03	0.07	[AF]

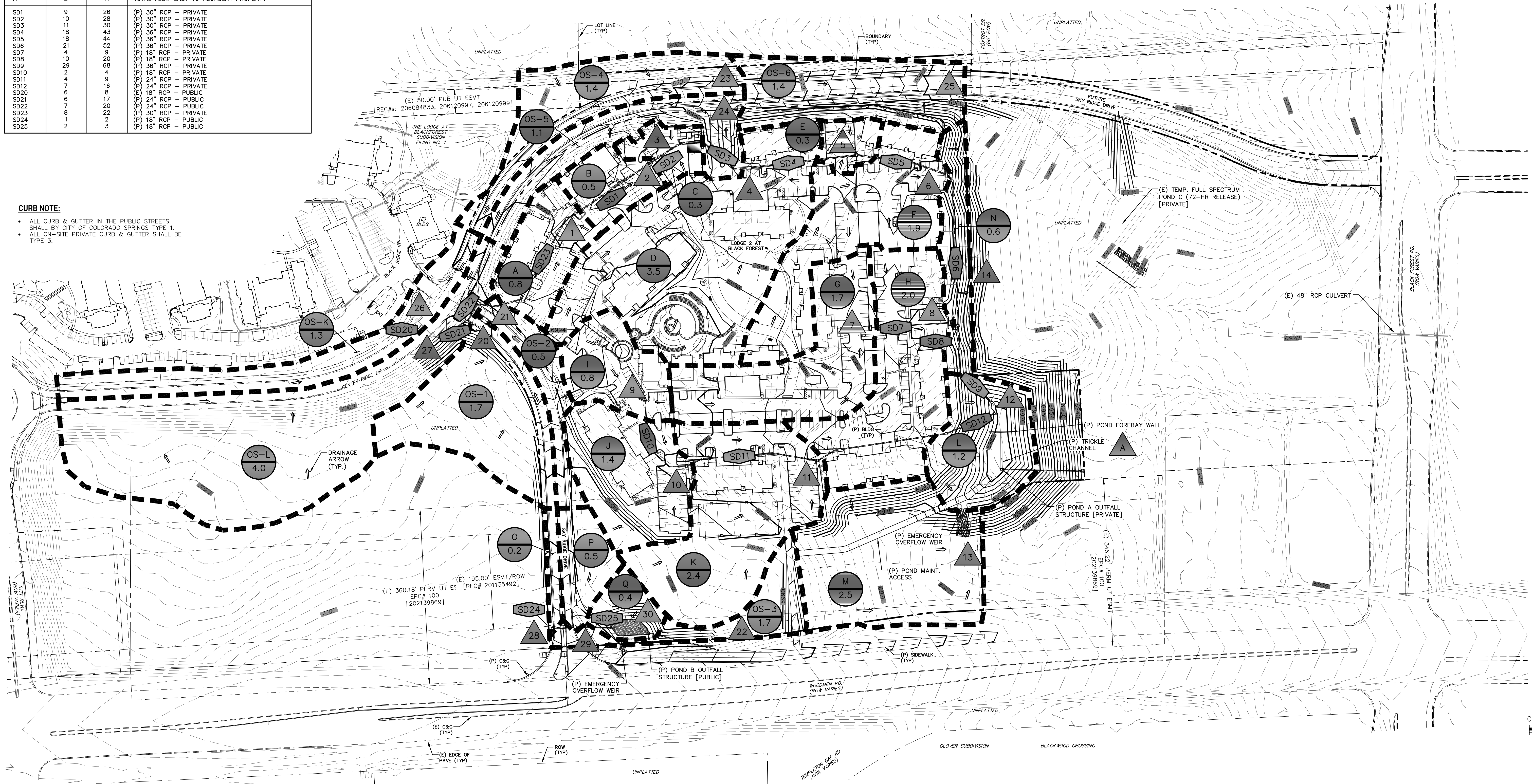


- LEGEND**
- EXISTING (E)
 - PROPOSED (P)
 - FUTURE (F)
 - CURB AND GUTTER C&G
 - EASEMENT ESMT
 - RIGHT-OF-WAY ROW
 - BOUNDARY
 - RIGHT-OF-WAY
 - LOT LINE
 - EASEMENT
 - (E) CONTOUR, INDEX
 - (P) CONTOUR, INDEX
 - (P) CONTOUR
 - (E) STORM SEWER, INLET, MH
 - (P) STORM SEWER, INLET, MH



CURB NOTE:

- ALL CURB & GUTTER IN THE PUBLIC STREETS SHALL BY CITY OF COLORADO SPRINGS TYPE 1.
- ALL ON-SITE PRIVATE CURB & GUTTER SHALL BE TYPE 3.



REV.	DESCRIPTION	DATE
1	ADDRESS CITY COMMENTS	11/17/17
2	ADDRESS CITY COMMENTS	03/09/18
3	ADDRESS CITY COMMENTS	08/30/18



PREPARED FOR:
CEDARWOOD DEVELOPMENT, INC.
1765 MERRIMAN ROAD
AKRON, OH 44313
(321) 704-3015



LODGE 2 AT
BLACK FOREST
DRAINAGE MAP
DEVELOPED CONDITIONS

DESIGNED BY: CDK	DRAWN BY: CDK
SCALE: 1"=100'	DATE: 09/12/18
JOB NUMBER: 91614	SHEET: 1 OF 1